



萊英家
Let UK Home

2 Bedrooms

Flat

Located in London

£2,350 Per Month



info@letukhome.co.uk

<https://www.letukhome.co.uk/>

02045348146



Flat 44, Beeley house 4 Mary Neuner Road

London | | N8 0FF



Let UK Home present this brand new 2 bedroom property in Beeley House part of Clarendon Road development.

This property comprises a large bright open plan kitchen and living room leading to a private balcony with great views, two double bedrooms with fitted wardrobes (master en-suite), a large family sized bathroom and ample storage.

Residents of this exceptional development have exclusive use of 24-hour concierge service, the spa, fitness centre, indoor swimming pool, sauna, steam room, gymnasium and treatment room.

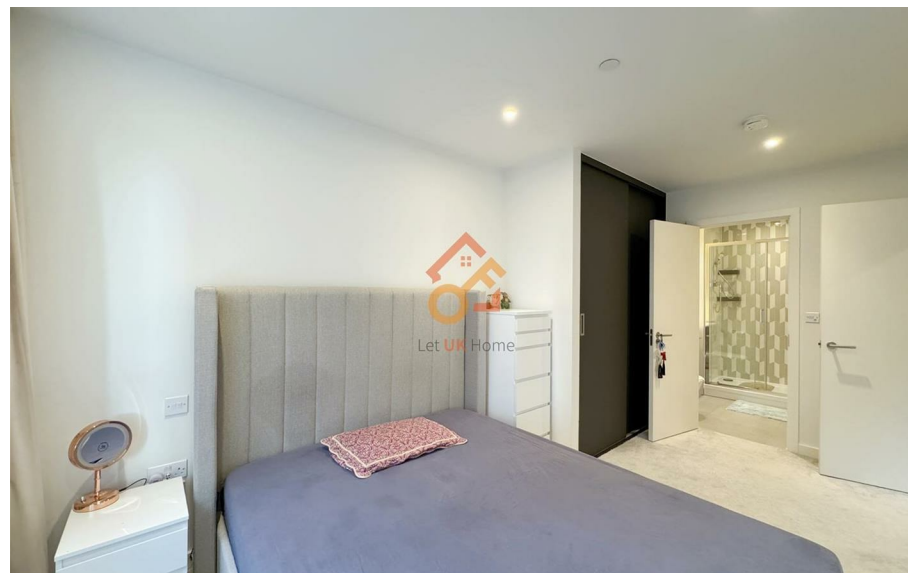
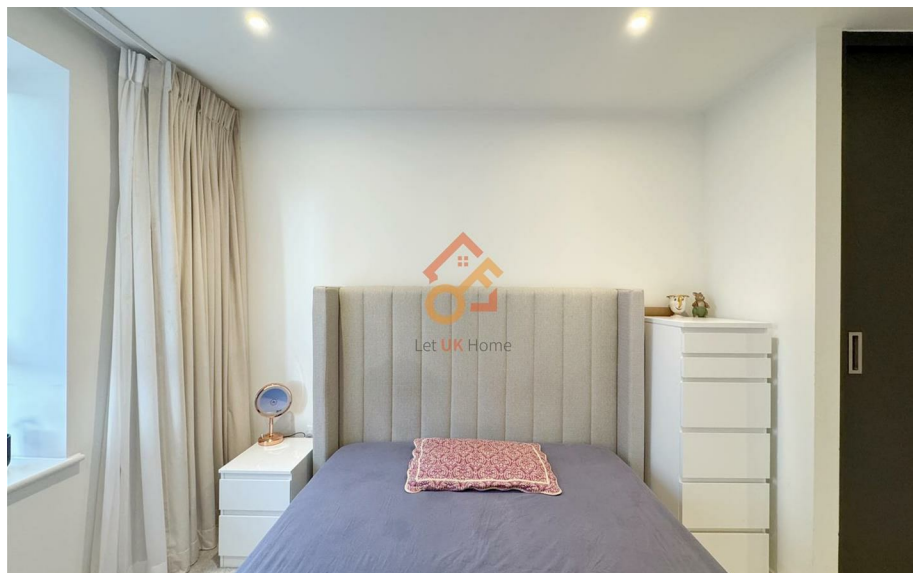
There are four major commercial areas around the apartment, including Wood Green, Hornsey, Crouch End, and Muswel Hi. Supermarkets, cafes, restaurants, bars, shops and banks can be found everywhere to meet your daily life and social needs.

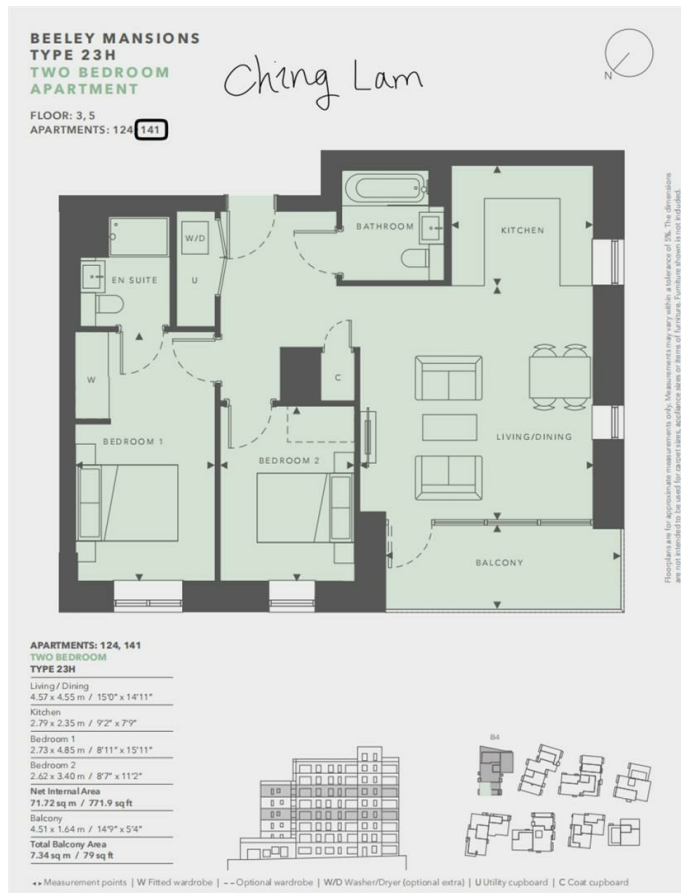
Flat 44, Beeley house 4 Mary Neuner Road

£2,350 Per Month



- 5th Floor
- Concierge Service
- The Gym
- Close to Local Shops
- 24h Security
- Swimming Pool
- Close to Transport Links





萊英家
Let **UK** Home

6/F Two Kingdom Street

London

W2 6BD

02045348146

info@letukhome.co.uk

Council Tax Band: D

Local Authority:

Agents Note: Whilst every care has been taken to prepare these particulars, they are for guidance purposes only. All measurements are approximate and are for general guidance purposes only and whilst every care has been taken to ensure their accuracy, they should not be relied upon and potential buyers/tenants are advised to recheck the measurements.

Energy Efficiency Rating		Current	Potential
Very energy efficient - lower running costs			
(92 plus) A			
(81-91) B		86	86
(69-80) C			
(55-68) D			
(39-54) E			
(21-38) F			
(1-20) G			
Not energy efficient - higher running costs			
England & Wales		EU Directive 2002/91/EC	

<https://www.letukhome.co.uk/>