



萊英家

Let UK Home

1 Bedrooms

Flat - Studio

Located in Wood  
Green, London

£1,750 Per Month



[pmadmin@letukhome.co.uk](mailto:pmadmin@letukhome.co.uk)

<https://www.letukhome.co.uk/>

020 4534 8145



# Flat 42, Azure House 5 Brook Road

## Wood Green, London | | N8 0FT



Let UK Home are excited to offer this spectacular studio apartment in the heart of Azure House part of the Clarendon Road development.

This stunning apartment features a meticulously designed open-plan kitchen, dining and living area leading to a private balcony. The bedroom comes with built-in wardrobes, complemented by a spacious family bathroom.

The development is fully equipped with gymnasium, swimming pool, resident meeting room, leisure room, physiotherapy room, yoga room, sauna room, 24-hour concierge service, etc.

The development is located within walking distance of two underground and two national rail stations. The Piccadilly Line and National Rail provide direct access to many of London's famous landmarks and universities within half an hour of travel from Wood Green, Turnpike Lane, Hornsey, or Alexandra Palace stations.

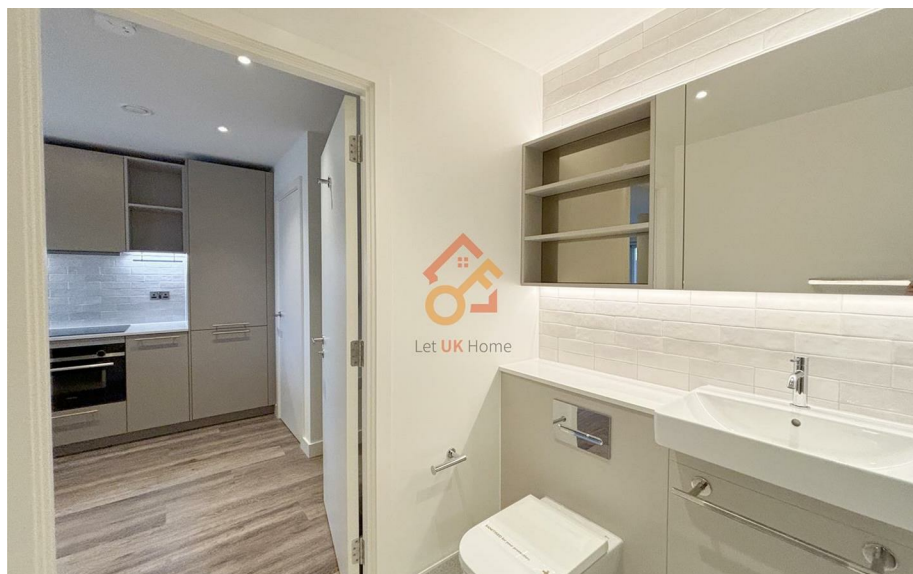
The development is surrounded by four major commercial areas, including Wood Green, Hornsey, Crouch End and Muswell Hill. Supermarkets, cafes, restaurants, bars, shops and banks can be found everywhere to meet your daily life and social needs.

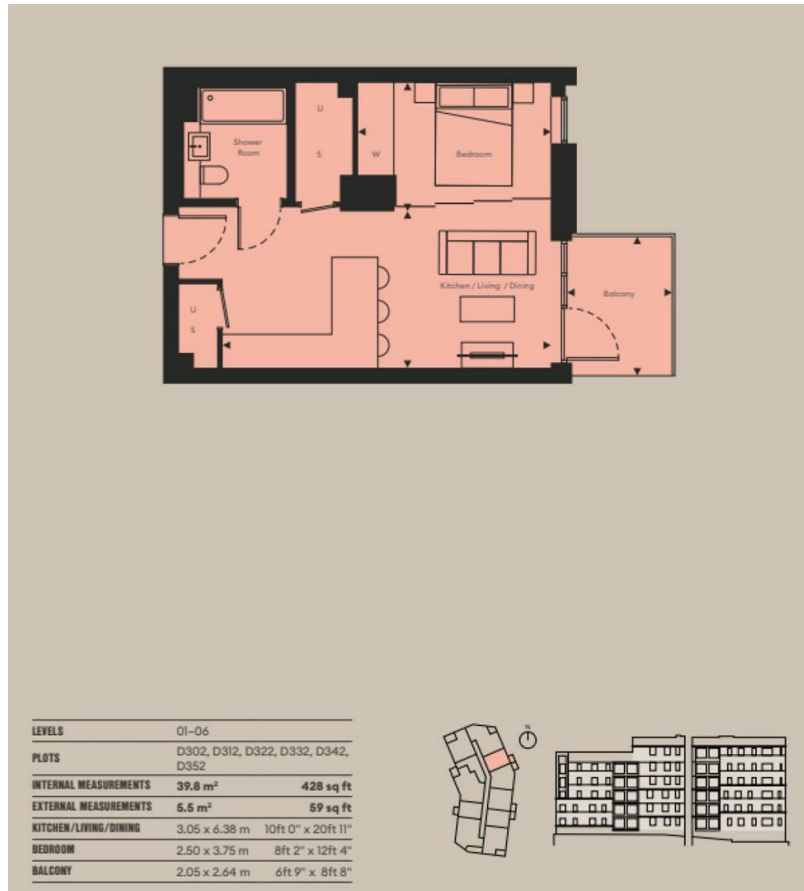
# Flat 42, Azure House 5 Brook Road

£1,750 Per Month



- 5th Floor
- 24h Security
- The Gym
- Treatment Room
- Co-working Space
- Concierge Service
- Swimming Pool
- Residents Lounge
- Sauna & Steam Room
- Yoga Room





6/F Two Kingdom Street  
London  
W2 6BD

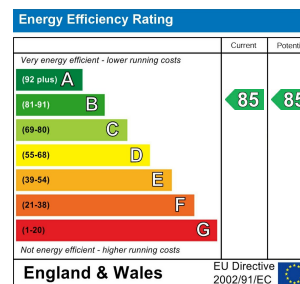
020 4534 8145

pmadmin@letukhome.co.uk

**Council Tax Band: C**

**Local Authority:**

Agents Note: Whilst every care has been taken to prepare these particulars, they are for guidance purposes only. All measurements are approximate and are for general guidance purposes only and whilst every care has been taken to ensure their accuracy, they should not be relied upon and potential buyers/tenants are advised to recheck the measurements.



<https://www.letukhome.co.uk/>