



萊英家  
Let UK Home

1 Bedrooms

Flat

Located in London

£1,850 Per Month



[pmadmin@letukhome.co.uk](mailto:pmadmin@letukhome.co.uk)

<https://www.letukhome.co.uk/>

020 4534 8145



# Flat 11 Cornelia House 3 Caversham Road

London | | NW9 4DU



Let UK Home are excited to offer this spectacular one bedroom apartment in the heart of Cornelia House part of the Beaufort Park.

The flat comprises a spacious open kitchen with a stylishly attached dining area, a magnificent living room leading to a private balcony, one bright bedroom with a built-in wardrobe and one modern bathroom.

The apartment has a variety of complete facilities, such as 24-hour concierge reception, gym, swimming pool, sauna, etc., as well as a series of convenient shops, bars and restaurants.

Close to fashionable landmarks Hendon, Mi Hi, Golders Green and Hampstead Heath; also close to multiple shopping places including Brent Cross Shopping Center, 02 Center and the fashionable Westfield Shopping Center,

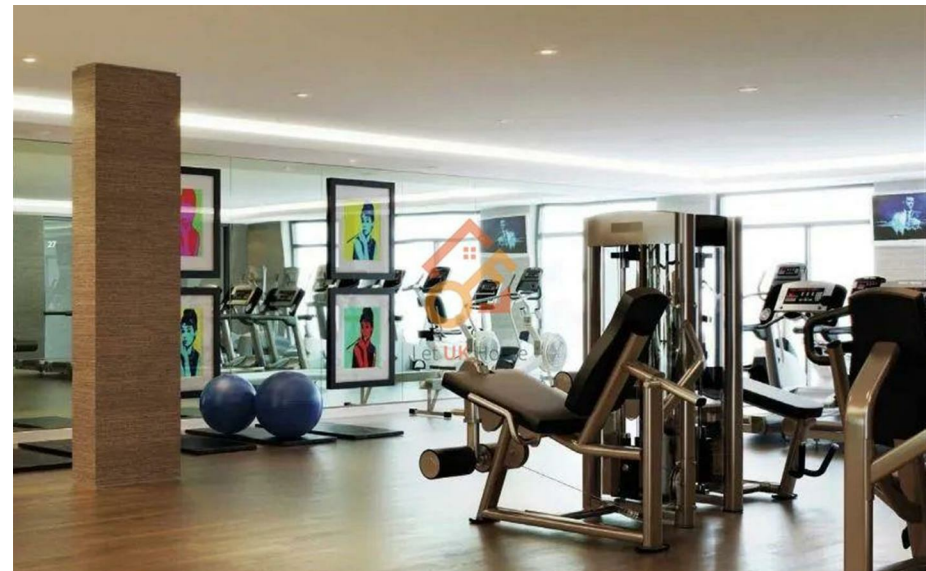
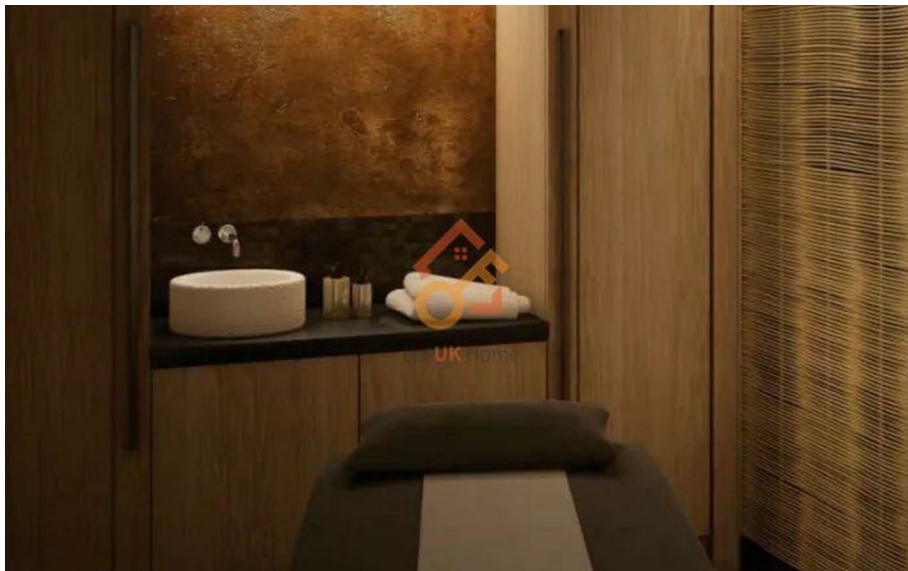
The apartment is within walking distance of Colindale subway station, Middlesex University, and can be quickly reached by car to Central Saint Martins, University College London, The London School of Economics and Political Science, King's College London.

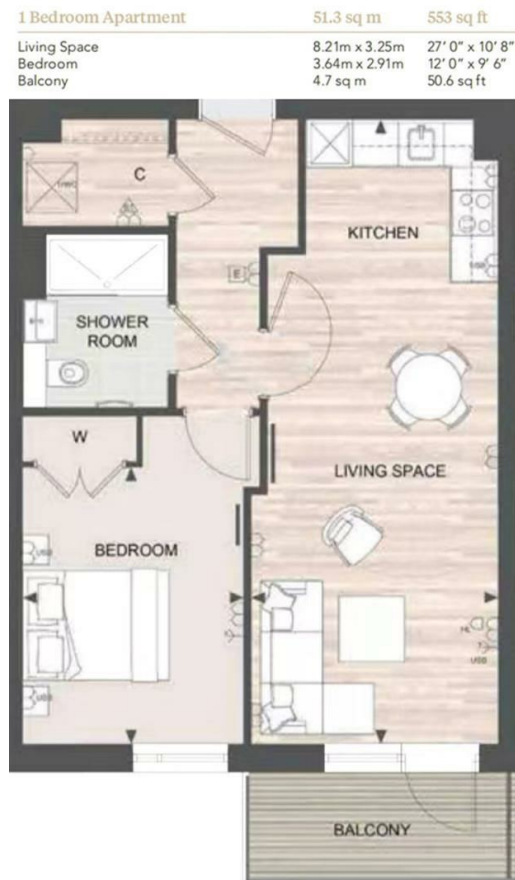
# Flat 11 Cornelia House 3 Caversham Road

£1,850 Per Month



- 5th Floor
- 24h Security
- The Spa
- Sauna & Steam Room
- Concierge Service
- The Gym
- Swimming Pool





6/F Two Kingdom Street  
London  
W2 6BD

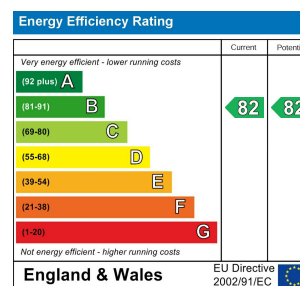
020 4534 8145

pmadmin@letukhome.co.uk

**Council Tax Band: C**

**Local Authority:**

Agents Note: Whilst every care has been taken to prepare these particulars, they are for guidance purposes only. All measurements are approximate and are for general guidance purposes only and whilst every care has been taken to ensure their accuracy, they should not be relied upon and potential buyers/tenants are advised to recheck the measurements.



<https://www.letukhome.co.uk/>