



萊英家  
Let UK Home

2 Bedrooms

Flat

Located in Salford,  
Manchester

£1,700 Per Month



[pmadmin@letukhome.co.uk](mailto:pmadmin@letukhome.co.uk)

<https://www.letukhome.co.uk/>

020 4534 8145



# Apartment 1503 12 Bankside Boulevard

## Salford, Manchester | | M3 7HY



Let UK Home present this stunning two-bedroom property in Bankside part of Colliers Yard in Manchester.

This property comprises a large bright open plan kitchen and living room, two double bedrooms with wardrobe (master en-suite), a large family sized bathroom and ample storage.

Residents of this exceptional development have exclusive use of the spa, fitness centre, indoor swimming pool, game room, residents lounge and co-working space. Furthermore, residents will also benefit from a 24 hour concierge and an unrivalled selection of shops, bars, restaurants, leisure facilities and beautiful courtyards.

Colliers Yard is not just a place to live; it is a vibrant community with easy access to all major amenities. You will find yourself within walking distance of renowned restaurants, lively bars, and unique boutiques, allowing you to immerse yourself in the local culture. For entertainment, the AO Arena and MediaCityUK are conveniently reachable by public transport, offering a plethora of events and activities.

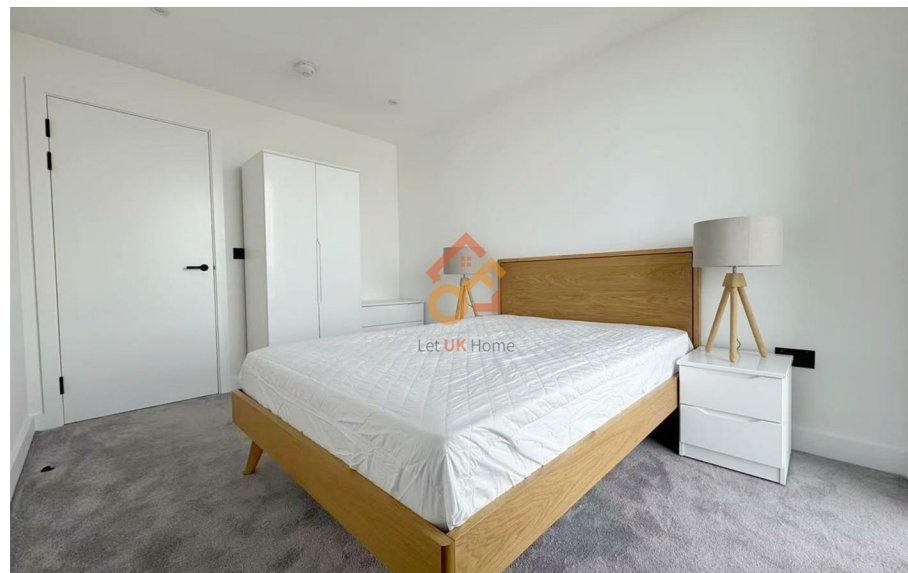
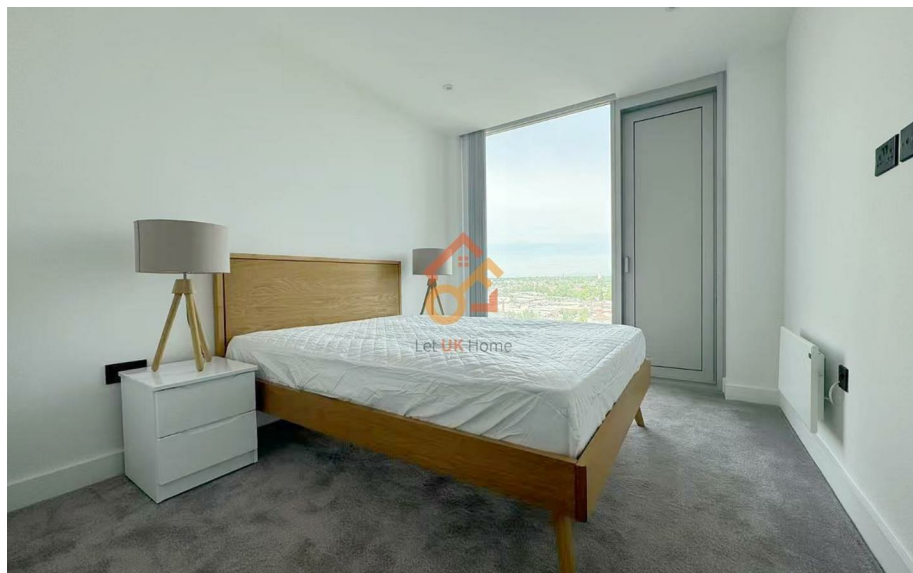
For those who need to travel further afield, Manchester Victoria station is nearby, providing excellent rail connections. Additionally, the motorway networks are easily accessible, and Manchester Airport is less than a 30-minute drive away, making this location perfect for both work and leisure.

# Apartment 1503 12 Bankside Boulevard

£1,700 Per Month



- 15th Floor
- 24h Security
- Swimming Pool
- The Gym
- Co-working Space
- Concierge Service
- The Spa
- Residents Lounge
- Cinema & Game Room





6/F Two Kingdom Street  
London  
W2 6BD

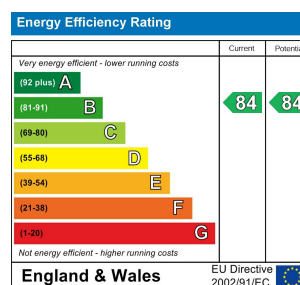
020 4534 8145

pmadmin@letukhome.co.uk

## Council Tax Band: New Build

## Local Authority:

Agents Note: Whilst every care has been taken to prepare these particulars, they are for guidance purposes only. All measurements are approximate and are for general guidance purposes only and whilst every care has been taken to ensure their accuracy, they should not be relied upon and potential buyers/tenants are advised to recheck the measurements.



<https://www.letukhome.co.uk/>