

萊英家

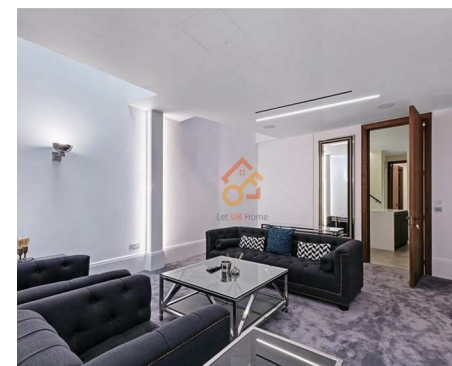
Let UK Home

5 Bedrooms

House

Located in London

£25,750 Per Month



pmadmin@letukhome.co.uk

<https://www.letukhome.co.uk/>

020 4534 8145



4 Trevor Place Knightsbridge

London | | SW7 1LA



Let UK Home are excited to offer this spacious 5-bedroom terraced house in Trevor Place nestled in the heart of Knightsbridge, just a stone's throw away from the iconic Harrods.

The property strikes a perfect balance between well-proportioned reception spaces, a superb kitchen and breakfast room, and a delightful family media room, providing ample room for a growing family. The ground floor features a reception room with a balcony. On the lower ground floor, a fabulous kitchen, W/C, a plant room await and a dining room leads to a private patio. The upper floors house five bedrooms, five bathrooms, and a lot of additional storage space.

This house is conveniently positioned to offer easy access to the vibrant amenities of Brompton Road, including shopping, dining, and transportation options. The property is within easy reach of Imperial College London and the Royal College of Art.

Knightsbridge, London's premier residential area, boasts world-class shops, hotels, and restaurants. Trevor Place is in a highly desirable location, close to Hyde Park, Harrods, Harvey Nichols, an array of fine dining/restaurants, stylish boutiques and designer flagship stores on Sloane Street. The area is rich in historic and cultural landmarks, museums, galleries and theatres with excellent transport to London Heathrow airport, Sloane Square underground station and Knightsbridge underground station.

4 Trevor Place

£25,750 Per Month

- House
- Walking distance to Tube Stations



- Walking distance to Imperial College London & Royal College of Art
- Close to Hyde Park





6/F Two Kingdom Street
London
W2 6BD

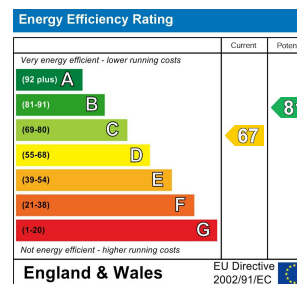
020 4534 8145

pmadmin@letukhome.co.uk

Council Tax Band: H

Local Authority:

Agents Note: Whilst every care has been taken to prepare these particulars, they are for guidance purposes only. All measurements are approximate and are for general guidance purposes only and whilst every care has been taken to ensure their accuracy, they should not be relied upon and potential buyers/tenants are advised to recheck the measurements.



<https://www.letukhome.co.uk/>