



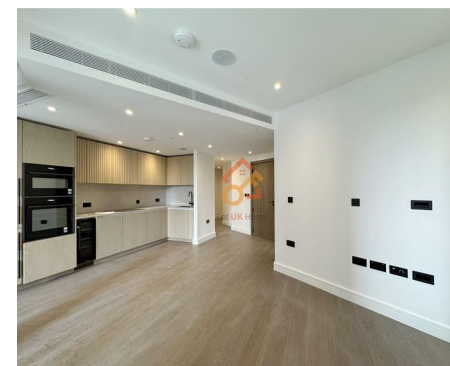
萊英家
Let UK Home

1 Bedrooms

Flat

Located in London

£3,200 Per Month



pmadmin@letukhome.co.uk

<https://www.letukhome.co.uk/>

020 4534 8145



206 One Linear Place, Nine Elms

London | | SW11 7BA



Let UK Home are excited to offer this spectacular 1 bedroom apartment in the heart of One Linear Place on the London Square Nine Elms.

The flat comprises a spacious open kitchen with a stylishly attached dining area, a magnificent living room leading to a large private balcony, one bright bedroom with built-in wardrobes and one modern bathroom.

Residents will enjoy outstanding amenities, including an elegant entrance lobby with a residential lounge incorporating soft seating and flexible workspaces, as well as a 24-hour concierge service.

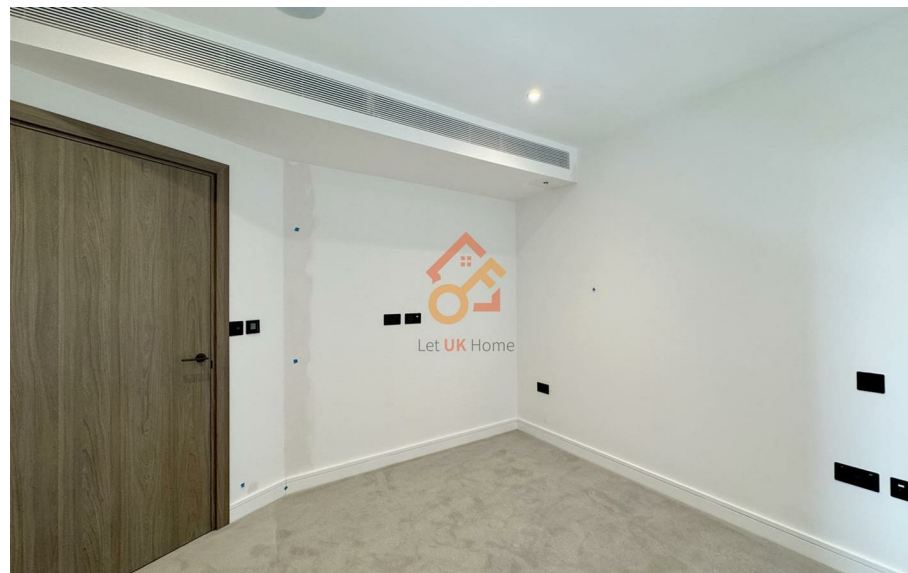
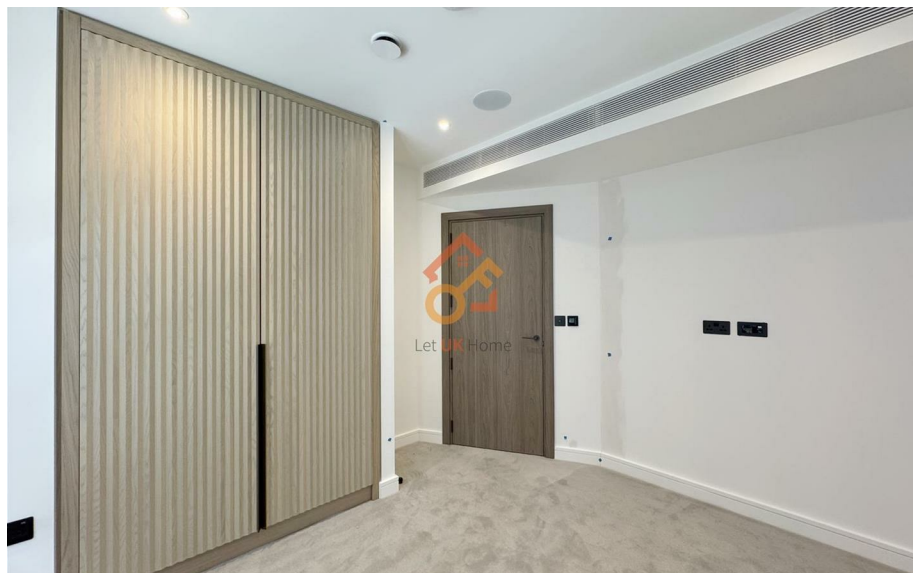
London Square Nine Elms offers an idyllic riverside setting, providing residents with the opportunity to relish the scenic beauty of the River Thames. It is also nestled within the prestigious Nine Elms Park, and surrounded by a variety of other parks, offering abundant green spaces and nature to the community.

Positioned in the heart of Nine Elms, with just several minutes from the Underground Station (Nine Elms), the well-connected location is enhanced by its proximity to shops, bars and restaurants, providing an ideal living environment.

206 One Linear Place, Nine Elms

£3,200 Per Month

- 2nd Floor
- 24h Security
- Residents Lounge
- Concierge Service
- Bike Storage





6/F Two Kingdom Street
London
W2 6BD

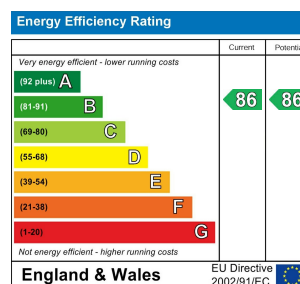
020 4534 8145

pmadmin@letukhome.co.uk

Council Tax Band: New Build

Local Authority:

Agents Note: Whilst every care has been taken to prepare these particulars, they are for guidance purposes only. All measurements are approximate and are for general guidance purposes only and whilst every care has been taken to ensure their accuracy, they should not be relied upon and potential buyers/tenants are advised to recheck the measurements.



<https://www.letukhome.co.uk/>