



萊英家
Let UK Home

1 Bedrooms

Flat

Located in London

£3,200 Per Month



pmadmin@letukhome.co.uk

<https://www.letukhome.co.uk/>

020 4534 8145



Apartment 608, 4 Merino Gardens

London | | E1W 2DS



Let UK Home present this brand new one-bedroom property in Merino Gardens part of London Dock.

This luxurious apartment features a meticulously designed open-plan living, kitchen, and dining area and a balcony. The bedroom comes with built-in wardrobes, complemented by a spacious family bathroom.

Residents of this exceptional development have exclusive use of indoor swimming pool, sauna & steam room, squash room, virtual golf suite, private cinema, gymnasium, and residents lounge. Furthermore, residents will also benefit from a 24 hour concierge and an unrivalled selection of shops, bars, restaurants, leisure facilities and beautiful courtyards.

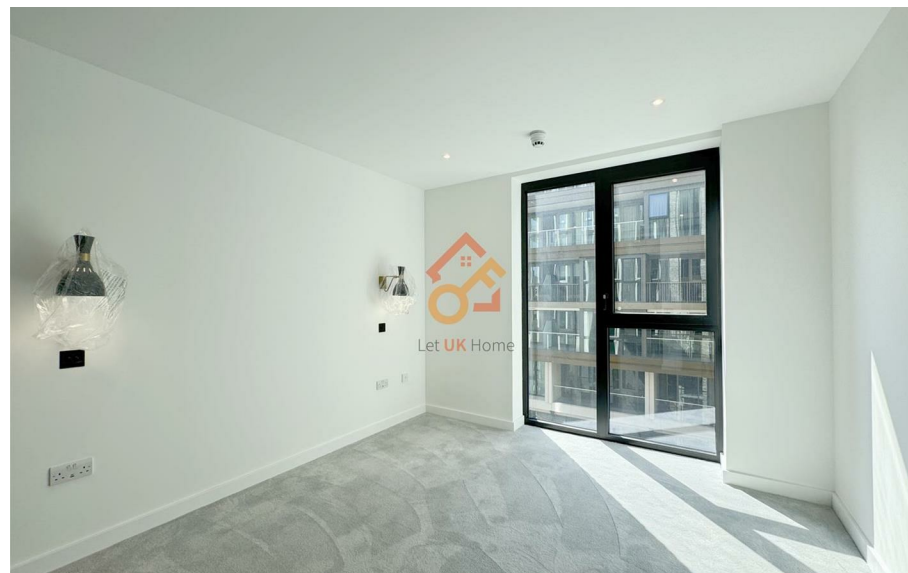
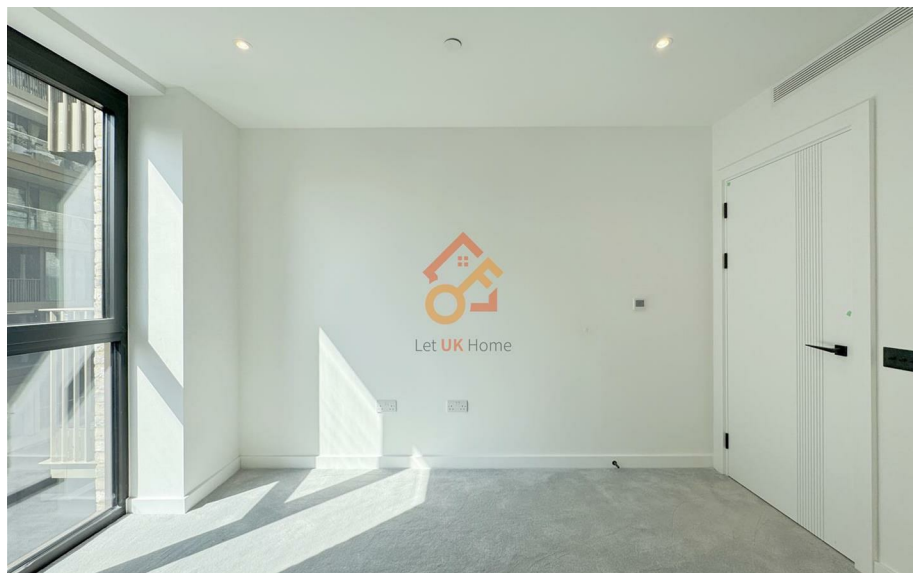
The apartment is located near the riverside, surrounded by beautiful squares and boulevards, close to City of London and St Katharine Docks. The world-famous Tower Bridge is within walking distance. Gauging Square is the center of the entire community, lined with restaurants, cafes and bars. The supermarket-Sainsbury's brings ease and convenience to residents' daily life.

Apartment 608, 4 Merino Gardens

£3,200 Per Month



- 6th Floor
- 24h Security
- The Gym
- Cinema & Game Room
- Concierge Service
- Swimming Pool
- Virtual Golf Suite





萊英家
Let **UK** Home

6/F Two Kingdom Street

London

W2 6BD

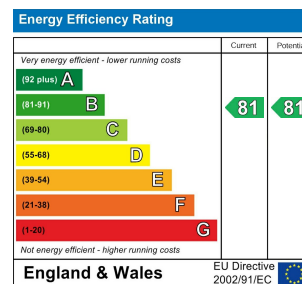
020 4534 8145

pmadmin@letukhome.co.uk

Council Tax Band: New Build

Local Authority:

Agents Note: Whilst every care has been taken to prepare these particulars, they are for guidance purposes only. All measurements are approximate and are for general guidance purposes only and whilst every care has been taken to ensure their accuracy, they should not be relied upon and potential buyers/tenants are advised to recheck the measurements.



<https://www.letukhome.co.uk/>