



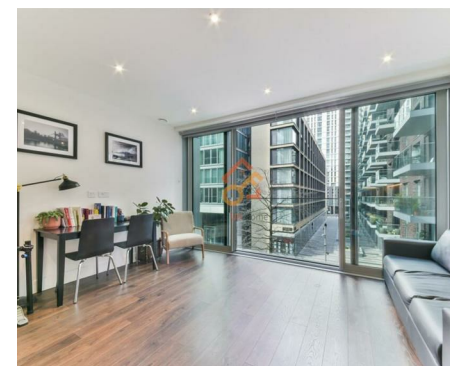
萊英家
Let UK Home

1 Bedrooms

Flat - Studio

Located in London

£2,750 Per Month



pmadmin@letukhome.co.uk

<https://www.letukhome.co.uk/>

020 4534 8145



Flat 206, Neroli House, 14 Piazza Walk

London | | E1 8ZH



Let UK Home are excited to offer this spectacular studio apartment in the heart of Neroli House, part of the Goodmans Fields.

The flat comprises a spacious open kitchen with a stylishly attached dining area, a magnificent living room, one bright bedroom with built-in wardrobes and one modern bathroom.

Residents of this exceptional development have exclusive use of 24-hour concierge, private screening room, business lounge, the spa, suana&steam room, swimming pool and gymnasium. Furthermore, residents will also benefit from an unrivalled selection of shops, bars, restaurants, leisure facilities and beautiful courtyards.

The apartment is across the river from Canary Wharf and not far from the Concord Dome. There are a large number of shops, supermarkets, restaurants and cafes. There are also Brick Lane Market and Columbia Flower Market near the apartment. The Thames River and Tower Bridge are also within walking distance, and you can easily and quickly reach Whitechapel and St. Catherine's Docks.

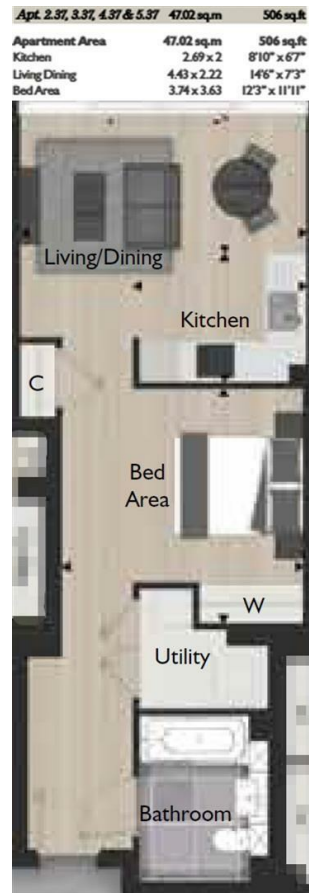
Flat 206, Neroli House, 14 Piazza Walk

£2,750 Per Month



- 2nd Floor
- 24h Security
- Swimming Pool
- The Spa
- Co-working Space
- Concierge Service
- The Gym
- Cinema & Game Room
- Sauna & Steam Room





6/F Two Kingdom Street
London
W2 6BD

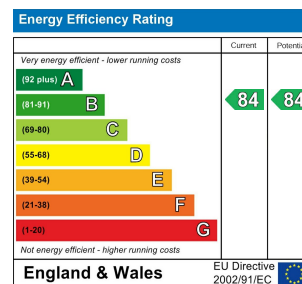
020 4534 8145

pmadmin@letukhome.co.uk

Council Tax Band: D

Local Authority:

Agents Note: Whilst every care has been taken to prepare these particulars, they are for guidance purposes only. All measurements are approximate and are for general guidance purposes only and whilst every care has been taken to ensure their accuracy, they should not be relied upon and potential buyers/tenants are advised to recheck the measurements.



<https://www.letukhome.co.uk/>