



萊英家
Let UK Home

1 Bedrooms

Flat

Located in Hayes

£1,700 Per Month



info@letukhome.co.uk

<https://www.letukhome.co.uk/>

02045348146



Flat 24 Forastero House 24 Farine Avenue

Hayes | | UB3 4GE



Let UK Home are excited to offer this exceptional one-bedroom apartment located within the impressive Hayes Village Development.

The flat comprises a spacious open kitchen with a stylishly attached dining area, a magnificent living room leading to a large private balcony, one bright bedroom and one modern bathroom.

Nestled in a location rich with local heritage, it offers an evolving high street within walking distance and the vibrant energy of central London just a short journey away. This bright, modern apartment is situated beside the Grand Union Canal, with a rich history woven into its surroundings.

Hayes Village, a landmark development on the historic Nestlé factory site, is surrounded by parklands including play areas, allotments, and a running track and well-connected transport links, making it an ideal choice for both families and city commuters.

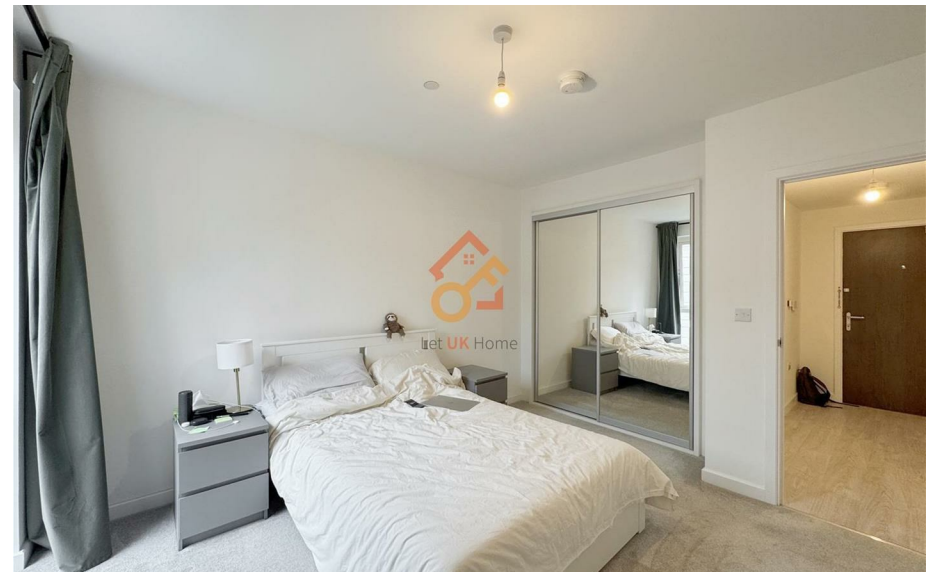
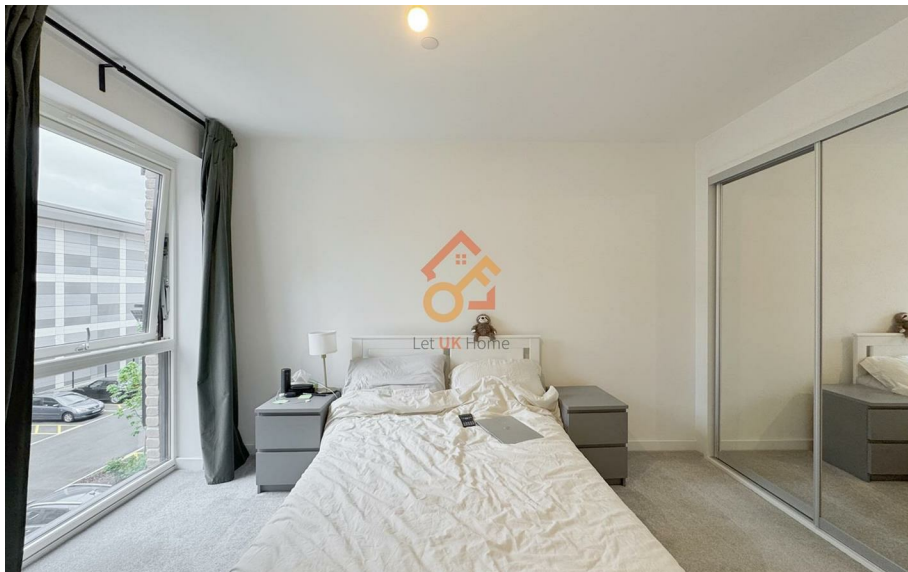
With convenient access to local amenities, Easy commute to central London via the Elizabeth Line, swift connections to Heathrow, and a lively community atmosphere, you can soon enjoy all the benefits this cosmopolitan area has to offer.

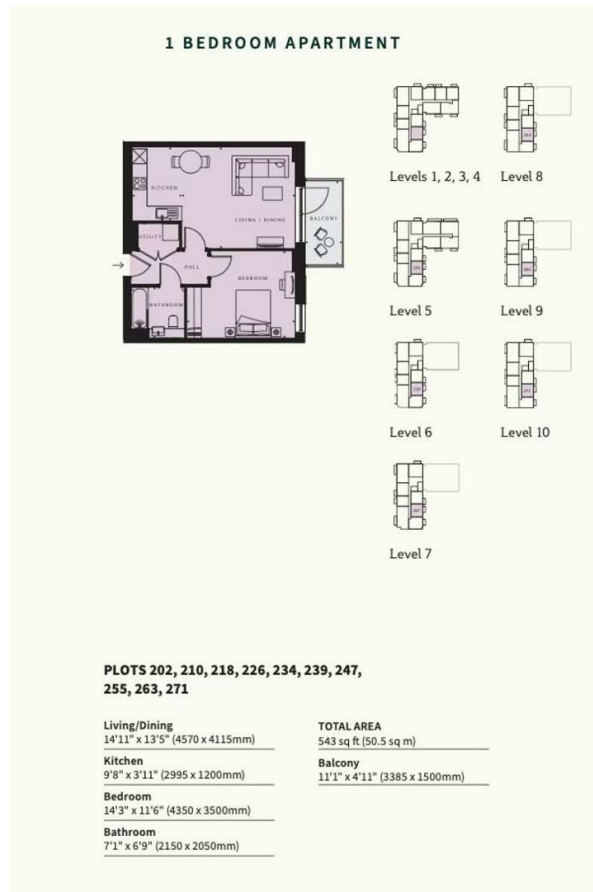
Flat 24 Forastero House 24 Farine Avenue

£1,700 Per Month



- 2nd Floor
- Green Space
- Private Balcony
- Well-connected Transport Links





6/F Two Kingdom Street
London
W2 6BD

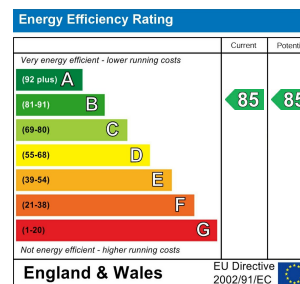
02045348146

info@letukhome.co.uk

Council Tax Band: C

Local Authority:

Agents Note: Whilst every care has been taken to prepare these particulars, they are for guidance purposes only. All measurements are approximate and are for general guidance purposes only and whilst every care has been taken to ensure their accuracy, they should not be relied upon and potential buyers/tenants are advised to recheck the measurements.



<https://www.letukhome.co.uk/>