



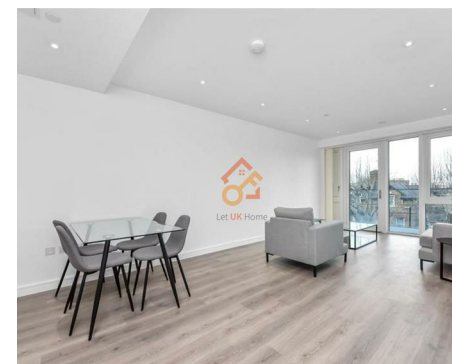
萊英家
Let UK Home

2 Bedrooms

Flat

Located in London

£3,550 Per Month



pmadmin@letukhome.co.uk

<https://www.letukhome.co.uk/>

020 4534 8145



Apt 24, Handley House, 19 Glenthorne Road

London | | W6 0EF



Let UK Home are excited to offer this spacious two-bedroom apartment at Handley House, part of the Sovereign Court development, in the heart of Hammersmith, W6.

The apartment consists of two large double bedrooms, a spacious open-plan living area, two modern bathrooms, a fully equipped kitchen, and a beautiful balcony.

Residents will further benefit from a fully equipped state-of-the-art gym and fitness facility, residents' only meeting room, communal courtyard, concierge, and 24-hour security services.

Set amongst modern restaurants, bars, and independent cafés, together with world-class shopping, the iconic Hammersmith Bridge and the majestic River Thames are also nearby. Theatre, cinema, dance, and art venues are all on your doorstep, with the West End a short tube ride away.

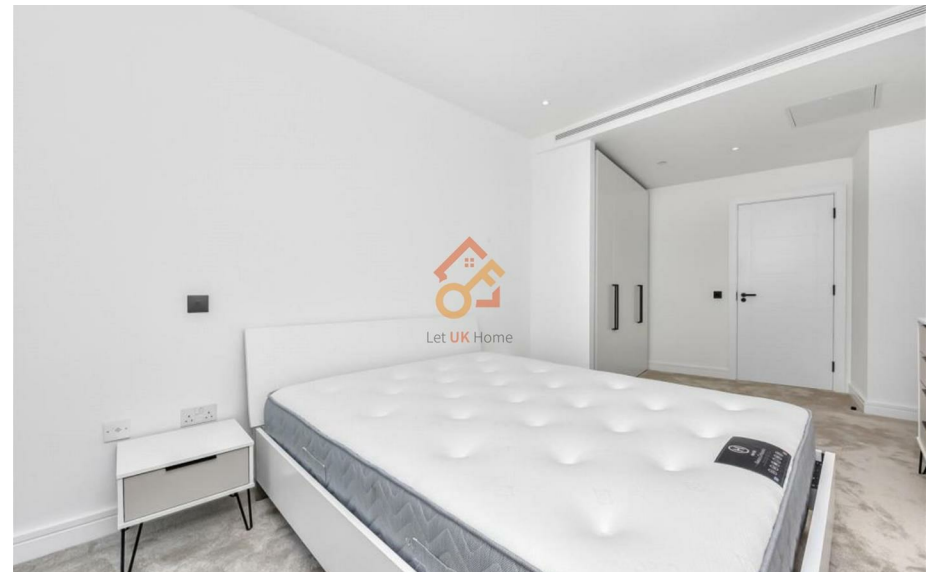
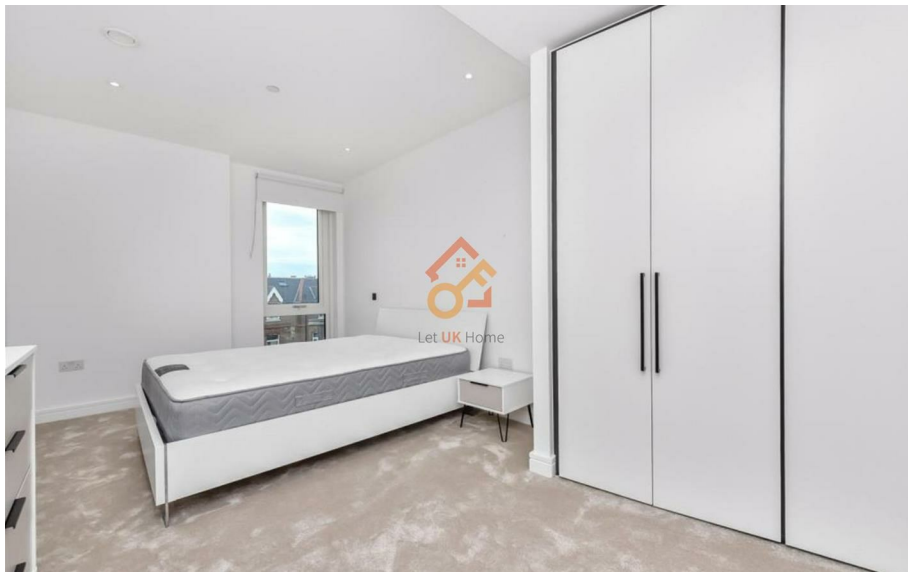
Handley House in Sovereign Court is only a short distance from Hammersmith stations, which is serviced by the Circle, District, Piccadilly and Hammersmith and City lines, and close to many of London's most fashionable locations, including Kensington, Fulham, and Chiswick.

Apt 24, Handley House, 19 Glenthorne Road

£3,550 Per Month



- 3rd Floor
- 24h Security
- CCTV
- Concierge Service
- The Gym





APARTMENT 293: 2 BEDROOM	92.3 sq m	993 sq ft*
Total Internal	86.9 sq m	935 sq ft
Living/Dining/Kitchen	3.66m x 9.26m	12'0" x 30'5"
Bedroom 1	2.95m x 3.61m	9'8" x 11'10"
Bedroom 2	2.75m x 4.85m	9'0" x 15'11"
Balcony	5.4 sq m	58 sq ft



萊英家
Let **UK** Home

6/F Two Kingdom Street

London

W2 6BD

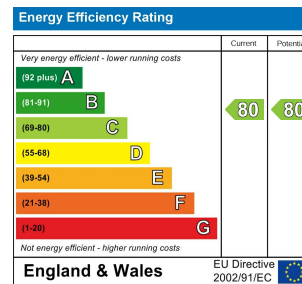
020 4534 8145

pmadmin@letukhome.co.uk

Council Tax Band: F

Local Authority:

Agents Note: Whilst every care has been taken to prepare these particulars, they are for guidance purposes only. All measurements are approximate and are for general guidance purposes only and whilst every care has been taken to ensure their accuracy, they should not be relied upon and potential buyers/tenants are advised to recheck the measurements.



<https://www.letukhome.co.uk/>