

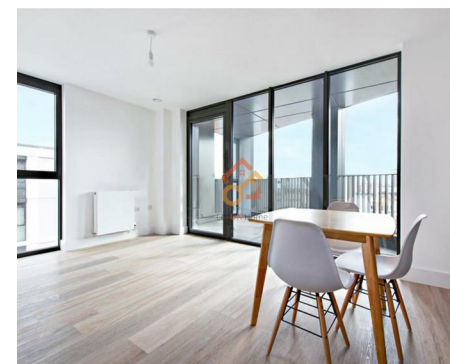
萊英家  
Let UK Home

2 Bedrooms

Flat

Located in London

£3,050 Per Month



[pmadmin@letukhome.co.uk](mailto:pmadmin@letukhome.co.uk)

<https://www.letukhome.co.uk/>

020 4534 8145



# Flat 22, Corn House 10 Marshgate Lane

London | | E15 2EU



Let UK Home are excited to offer this spectacular two-bedroom apartment in the heart of Corn House, part of the Stratford Mill development, located in the bustling Marshgate Lane neighborhood, offering an ideal residential choice for urban dwellers seeking comfort and convenience.

This property comprises a large bright open plan kitchen and living room leading to a private balcony, three double bedrooms with wardrobes(master with en-suite), a large family sized bathroom and ample storage.

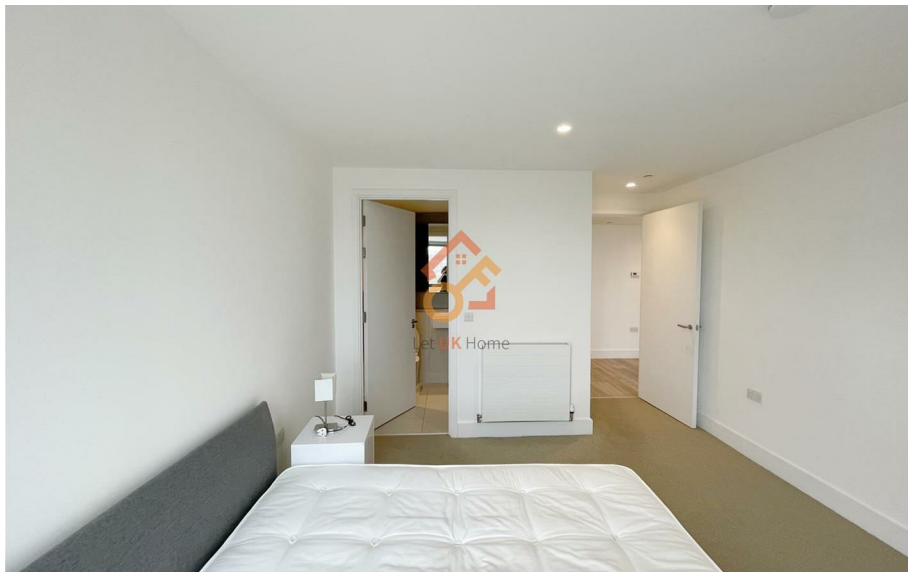
Situated in the accessible Marshgate Lane area, the apartment is surrounded by a plethora of amenities such as shopping malls, restaurants, and entertainment venues that enrich your daily life. The apartment is close to multiple transportation routes and Westfield, Europe's largest shopping mall. It is within walking distance to the 2012 London Olympic venue - Queen Elizabeth Olympic Park, which is very suitable for daily physical exercise. Residents here can enjoy peaceful and comfortable living spaces while having easy access to nearby parks and green spaces to relish the beauty of nature. Corn House provides a safe, convenient, and comfortable home suitable for both single professionals and families.

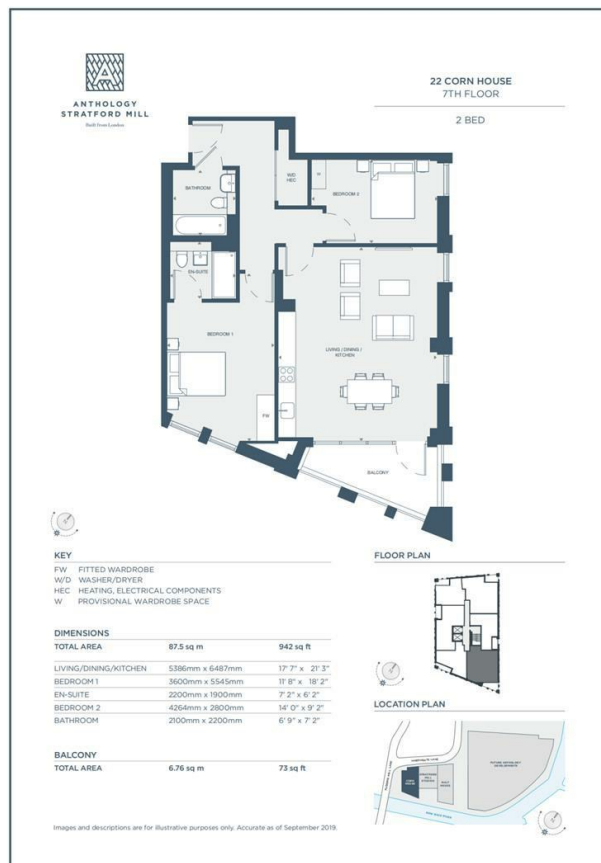
# Flat 22, Corn House 10 Marshgate Lane

## £3,050 Per Month



- 7th Floor
- 24h Security
- Close to Local Shops
- Concierge Service
- Private Balcony
- Close to Transport Links





萊英家  
Let **UK** Home

6/F Two Kingdom Street

London

W2 6BD

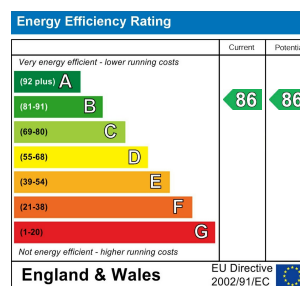
020 4534 8145

pmadmin@letukhome.co.uk

**Council Tax Band: E**

**Local Authority:**

Agents Note: Whilst every care has been taken to prepare these particulars, they are for guidance purposes only. All measurements are approximate and are for general guidance purposes only and whilst every care has been taken to ensure their accuracy, they should not be relied upon and potential buyers/tenants are advised to recheck the measurements.



<https://www.letukhome.co.uk/>