



萊英家
Let UK Home

3 Bedrooms

Flat

Located in Wembley

£3,500 Per Month



pmadmin@letukhome.co.uk

<https://www.letukhome.co.uk/>

020 4534 8145



83 Waterview House 12 Quay Walk

Wembley | | HA0 1BE



Let UK Home present this spectacular three-bedroom apartment in Waterview House, part of the Grand Union development located in Alperton.

This property comprises a large bright open plan kitchen and living room leading to a private balcony, three double bedrooms with wardrobes(master with en-suite), a large family sized bathroom and ample storage.

Residents of this exceptional development have exclusive use of fitness gym, bowling alley, screening room and residents lounge. Furthermore, residents will also benefit from a 24 hour concierge and an unrivalled selection of shops, bars, restaurants, leisure facilities and beautiful landscaped courtyards.

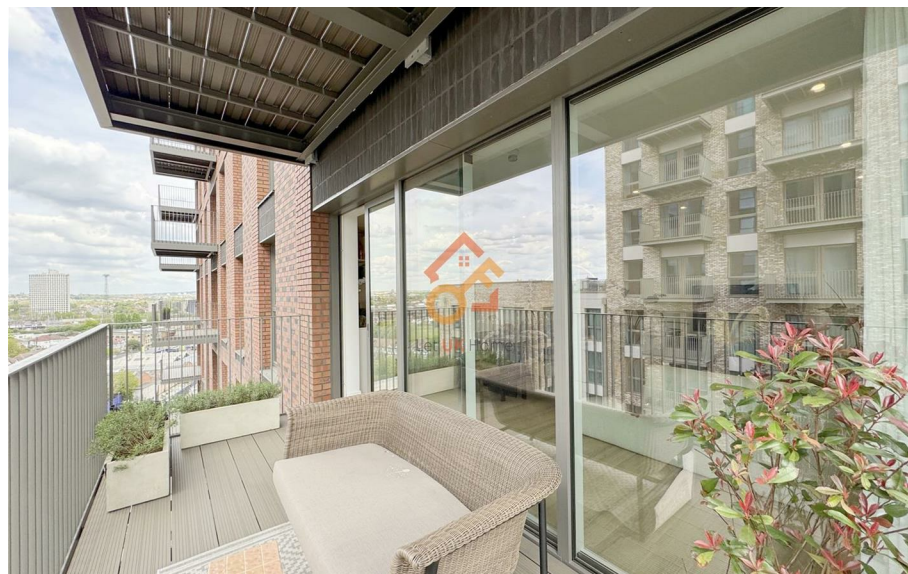
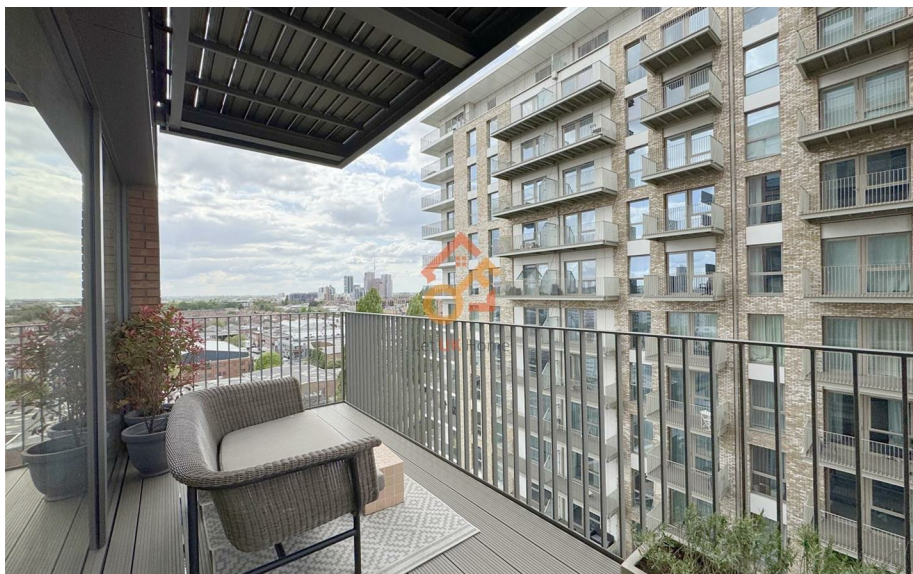
Grand Union is located in the Alperton between Wembley and Ealing, enjoying a variety of resources in both boroughs. There are many restaurants, bars, shopping malls, supermarkets, bank branches, post offices, etc. in the surrounding area.

83 Waterview House 12 Quay Walk

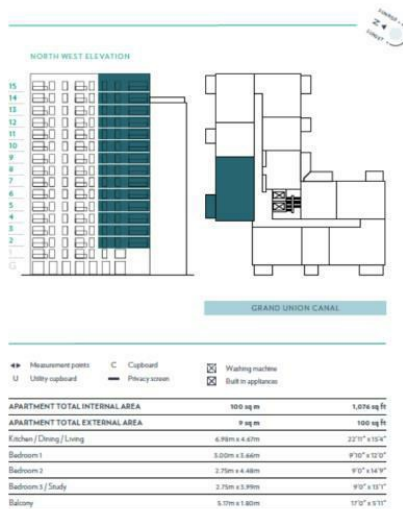
£3,500 Per Month



- 8th Floor
- 24h Security
- Cinema & Game Room
- Residents Lounge
- Concierge Service
- The Gym
- Bowling Alley
- Parking Available



This elegant apartment has been thoughtfully designed to incorporate three double bedrooms, one of which would make the perfect home office or nursery. The bespoke kitchen has an integrated dishwasher, fridge freezer and wine cooler, and the stylish bathrooms have power showers, bespoke vanity units and premium porcelain tiling. As you step out onto the spacious balcony you can enjoy views across to the Grand Union Canal.



萊英家
Let **UK** Home

6/F Two Kingdom Street

London

W2 6BD

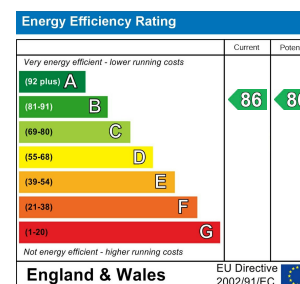
020 4534 8145

pmadmin@letukhome.co.uk

Council Tax Band: New Build

Local Authority:

Agents Note: Whilst every care has been taken to prepare these particulars, they are for guidance purposes only. All measurements are approximate and are for general guidance purposes only and whilst every care has been taken to ensure their accuracy, they should not be relied upon and potential buyers/tenants are advised to recheck the measurements.



<https://www.letukhome.co.uk/>