



萊英家
Let UK Home

2 Bedrooms

Flat

Located in London

£2,500 Per Month



pmadmin@letukhome.co.uk

<https://www.letukhome.co.uk/>

020 4534 8145



Flat 1005 Barnacle House, 1 Hemlock Street

London | | E14 0YW



Let UK Home present this brand new two bedroom property in Barnacle House, part of Porter House in the Poplar Riverside development.

This property comprises a large bright open plan kitchen and living room leading to a large private balcony with great views, two double bedrooms with wardrobes (master en-suite), a large family sized bathroom and ample storage.

Residents of this exceptional development have exclusive use of the spa including sauna, steam and salt inhalation room, 20m swimming pool and vitality pool with wellness features, experience shower, changing rooms, cinema room, games room and card room, private meeting rooms, co-working space, residents' den lounge, private call booth and so on. Furthermore, residents will also benefit from a 24 hour concierge and an unrivalled selection of shops, bars, restaurants, leisure facilities and beautiful courtyards.

The property is within walking distance of Langdon Park, All Saints and East India for DLR. Residents of Poplar Riverside only need a short journey to the bustling business district of Canary Wharf, and a bicycle ride to the famous shopping mall in East London - Westfield. Residents can easily reach the commercial high street Bond Street, Heathrow International Airport.

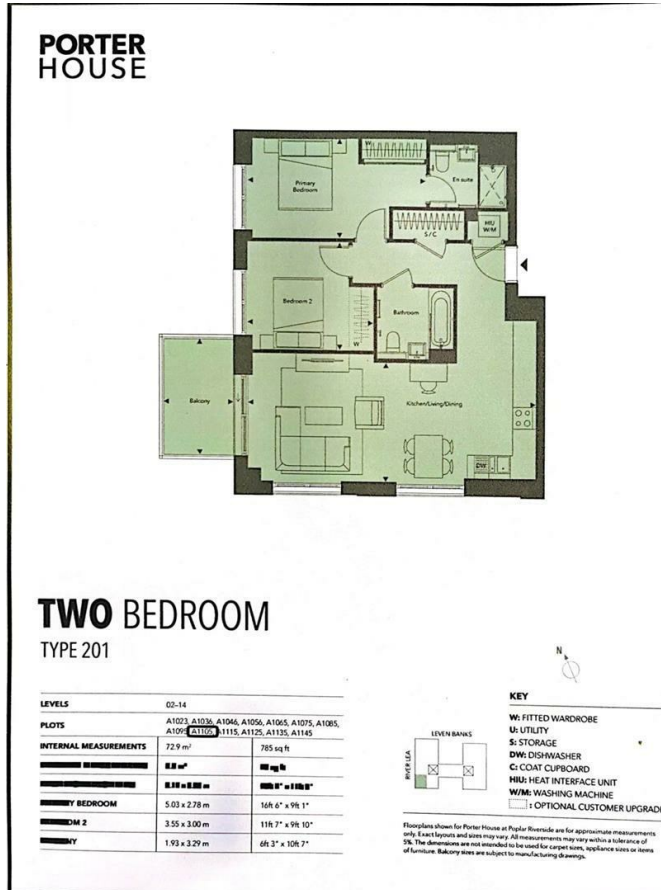
Flat 1005 Barnacle House, 1 Hemlock Street

£2,500 Per Month



- 10th Floor
- 24h Security
- The Spa
- Sauna & Steam Room
- Residents Lounge
- Concierge Service
- Swimming Pool
- Cinema & Game Room
- Co-working Space





萊英家
Let **UK** Home

6/F Two Kingdom Street

London

W2 6BD

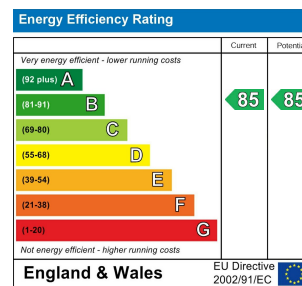
020 4534 8145

pmadmin@letukhome.co.uk

Council Tax Band: New Build

Local Authority:

Agents Note: Whilst every care has been taken to prepare these particulars, they are for guidance purposes only. All measurements are approximate and are for general guidance purposes only and whilst every care has been taken to ensure their accuracy, they should not be relied upon and potential buyers/tenants are advised to recheck the measurements.



<https://www.letukhome.co.uk/>