

萊英家

Let UK Home

2 Bedrooms

Flat

Located in London

£3,467 Per Month



padmin@letukhome.co.uk

<https://www.letukhome.co.uk/>

020 4534 8145



1109 Harcourt Tower, 67 Marsh Wall

London | | E14 9GS



Let UK Home are excited to offer this spectacular two bedroom apartment in the heart of Harcourt Tower part of the South Quay Plaza.

This property comprises a large bright open plan kitchen and living room with great views, two double bedrooms with fitted wardrobes, a large family sized bathroom and ample storage.

The apartment has a 24-hour concierge service, a leisure and wellness center and a fitness center (with an outdoor hot tub), iGarden-an advanced shared workspace, supporting conference rooms and outdoor work areas, a game room with an independent soundproof karaoke room, a 20-meter swimming pool, a 56th-floor bar and lounge, and a terrace. It is worth mentioning that the 56th-floor bar is one of the highest residential bars in Europe. Residents can overlook Canary Wharf, the Thames, the City of London, etc., and enjoy a beautiful panoramic view.

Harcourt Tower is located in the heart of Canary Wharf. Canary Wharf has a beautiful environment, with multiple parks and cool blue riverside spaces, a total of 2.6 acres of green place, and complete supporting facilities for life, such as many internationally renowned hotels and more than 280 shops, cafes, bars, and restaurants. It is a shopping paradise, with everything from well-known brand stores, commercial streets to shopping malls. There are also many well-known cultural attractions near Canary Wharf, such as Tower Bridge, Royal Observatory and National Maritime Museum. In addition, there are many art centers, museums and theaters in the area, such as Canary Wharf Arts Centre, Museum of London and Royal Institute of British Architects.

1109 Harcourt Tower, 67 Marsh Wall

£3,467 Per Month

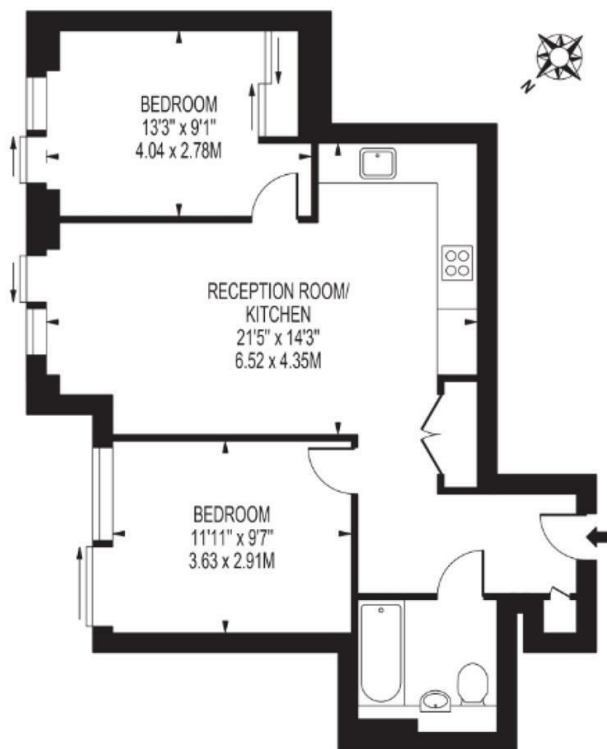


- 11th Floor
- 24h Security
- Swimming Pool
- Cinema & Game Room
- Sauna & Steam Room
- Concierge Service
- The Gym
- Co-working Space
- The Spa
- Rooftop Terrace



HARCOURT TOWER

APPROXIMATE GROSS INTERNAL FLOOR AREA: 608 SQ FT - 56.48 SQ M



萊英家

Let UK Home

6/F Two Kingdom Street

London

W2 6BD

020 4534 8145

pmadmin@letukhome.co.uk

Council Tax Band: E

Local Authority:

Agents Note: Whilst every care has been taken to prepare these particulars, they are for guidance purposes only. All measurements are approximate and are for general guidance purposes only and whilst every care has been taken to ensure their accuracy, they should not be relied upon and potential buyers/tenants are advised to recheck the measurements.

Energy Efficiency Rating		Current	Potential
Very energy efficient - lower running costs			
(92 plus) A			
(81-91) B		84	84
(69-80) C			
(55-68) D			
(39-54) E			
(21-38) F			
(1-20) G			
Not energy efficient - higher running costs			
England & Wales		EU Directive 2002/91/EC	

<https://www.letukhome.co.uk/>