



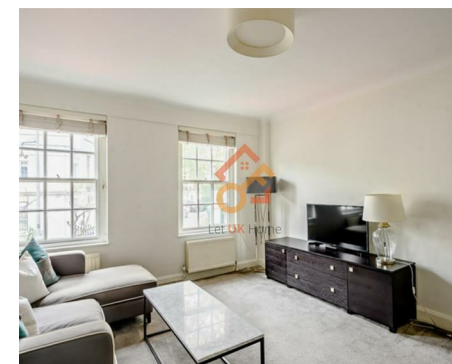
萊英家
Let UK Home

2 Bedrooms

Flat

Located in London

£4,550 Per Month



pmadmin@letukhome.co.uk

<https://www.letukhome.co.uk/>

020 4534 8145



Unit 27 145 Fulham Road

London | | SW3 6SH



Nestled in the heart of London, this charming flat at 145 Fulham Road offers a delightful blend of comfort and convenience. Spanning an impressive 820 square feet, this well-appointed residence features two spacious bedrooms, making it an ideal choice for couples, small families, or professionals seeking a stylish urban retreat.

Upon entering, you are welcomed into a bright and airy reception room, perfect for relaxation or entertaining guests. The layout is thoughtfully designed to maximise space and light, creating a warm and inviting atmosphere throughout. The flat boasts a well-equipped bathroom, ensuring all your daily needs are met with ease.

Situated in a vibrant area, this property benefits from excellent transport links and a plethora of local amenities. Residents can enjoy the nearby shops, cafes, and restaurants that Fulham Road has to offer, making it a lively and desirable location to call home.

This flat presents a wonderful opportunity to experience London living at its finest. With its prime location and comfortable living spaces, it is sure to appeal to those seeking a modern lifestyle in one of the city's most sought-after neighbourhoods. Don't miss the chance to make this lovely flat your new home.

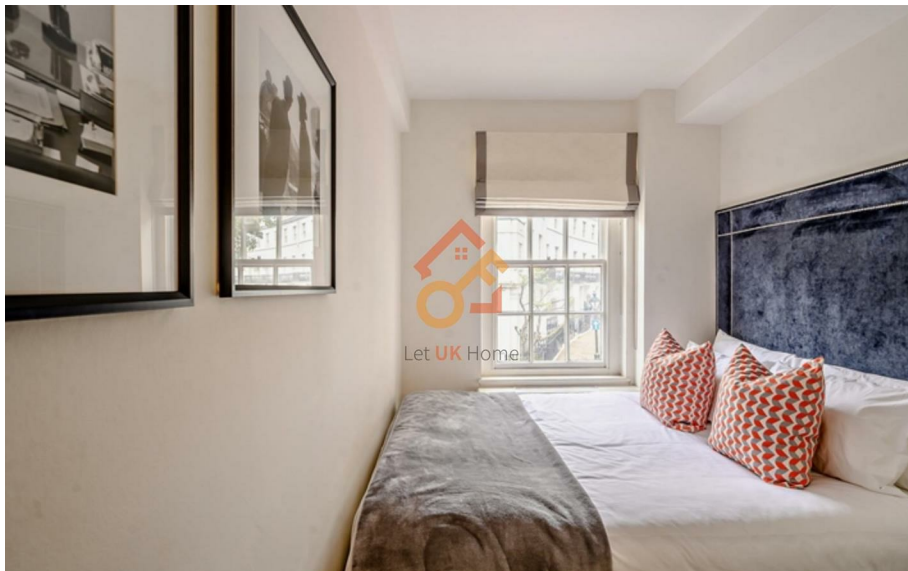
Unit 27 145 Fulham Road

£4,550 Per Month



- 1st floor
- Short walk to South Kensington Underground Station
- 24-Hour Emergency Helpline | Lift Service | Superfast Broadband

- Two Double Bedrooms | Pet Friendly
- Dedicated Building Manager | On-Site Porter | CCTV
- No agency fees | Flexible rental terms | Available furnished or unfurnished





萊英家
Let **UK** Home

6/F Two Kingdom Street
London
W2 6BD

020 4534 8145

pmadmin@letukhome.co.uk

Council Tax Band: G

Local Authority:

Agents Note: Whilst every care has been taken to prepare these particulars, they are for guidance purposes only. All measurements are approximate and are for general guidance purposes only and whilst every care has been taken to ensure their accuracy, they should not be relied upon and potential buyers/tenants are advised to recheck the measurements.

Energy Efficiency Rating		
	Current	Potential
Very energy efficient - lower running costs		
(92 plus) A		
(81-91) B		
(69-80) C		
(55-68) D		
(39-54) E		
(21-38) F		
(1-20) G		
Not energy efficient - higher running costs		
England & Wales		
EU Directive 2002/91/EC		

<https://www.letukhome.co.uk/>