



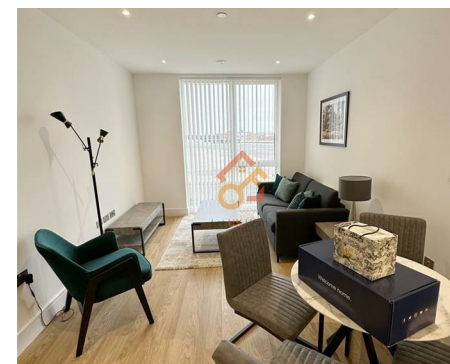
萊英家  
Let UK Home

1 Bedrooms

Flat

Located  
in Birmingham

£1,350 Per Month



[padmin@letukhome.co.uk](mailto:padmin@letukhome.co.uk)

<https://www.letukhome.co.uk/>

020 4534 8145



# 106 East Timber Yard, 118 Pershore Street

## Birmingham | | B5 6PA



Let UK Home are excited to offer this charming one-bedroom flat located in the vibrant Timber Yard development on Pershore Street, Birmingham.

The property features a well-appointed bedroom, a stylish bathroom, and a welcoming reception room, offering a perfect blend of modern living and convenience, and making it an ideal space for individuals or couples seeking a comfortable home.

Residents benefit from an array of exceptional amenities. A 24-hour concierge service ensures peace of mind and convenience, while a fully equipped gym caters to fitness enthusiasts. For those who enjoy socialising or unwinding, the residents' lounge and screening room provide perfect spaces to relax and connect with neighbours.

Situated in the heart of Birmingham, this property is surrounded by a wealth of amenities, including shops, restaurants, and cultural attractions, ensuring that you are never far from the action. Whether you are looking to explore the city's vibrant nightlife or enjoy a leisurely stroll in one of the nearby parks, this location has it all.

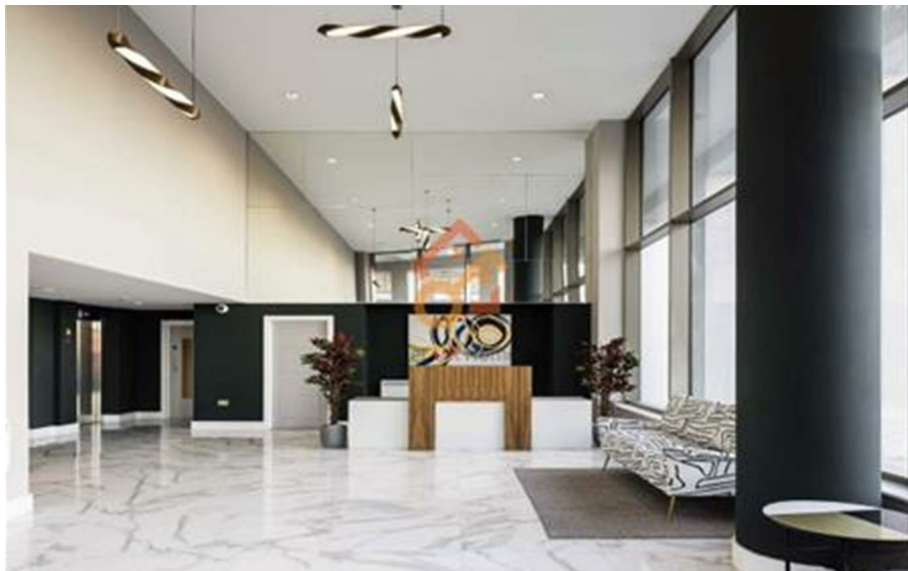
In summary, this flat in the Timber Yard development presents an excellent opportunity for modern living in Birmingham. With its appealing features and prime location, it is sure to attract those seeking a comfortable and stylish home. Do not miss the chance to make this property your own.

# 106 East Timber Yard, 118 Pershore Street

£1,350 Per Month



- 1st Floor
- 24h Security
- Cinema & Game Room
- Communal Courtyard
- Concierge Service
- The Gym
- Residents Lounge
- Walk to China Town







TYPE	INTERNAL		EXTERNAL	
	SQ.M.	SQ.FT.	SQ.M.	SQ.FT.
1 BED	45.4	489	-	-



萊英家  
Let **UK** Home

6/F Two Kingdom Street

London

W2 6BD

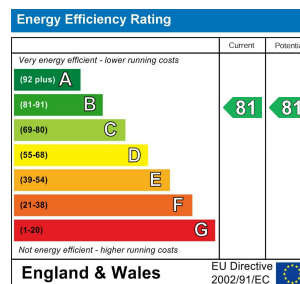
020 4534 8145

pmadmin@letukhome.co.uk

**Council Tax Band: C**

**Local Authority:**

Agents Note: Whilst every care has been taken to prepare these particulars, they are for guidance purposes only. All measurements are approximate and are for general guidance purposes only and whilst every care has been taken to ensure their accuracy, they should not be relied upon and potential buyers/tenants are advised to recheck the measurements.



<https://www.letukhome.co.uk/>