



萊英家

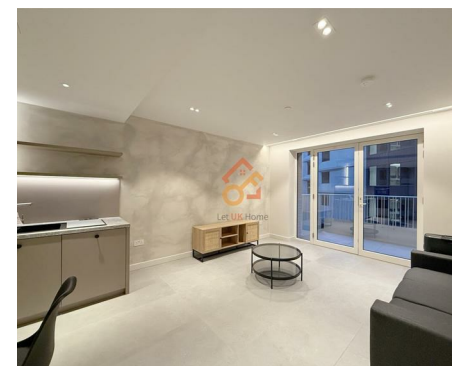
Let UK Home

1 Bedrooms

Flat

Located in London

£3,500 Per Month



pmadmin@letukhome.co.uk

<https://www.letukhome.co.uk/>

020 4534 8145



Apartment A04.06 Capella Court 1 Lewis Cubitt Park

London | | N1C 4EJ



Let UK Home are excited to offer this spectacular one bedroom apartment in the heart of Capella part of the King's Cross.

The flat comprises a spacious open kitchen with a stylishly attached dining area, a magnificent living room leading to a large private balcony with great views, one bright bedroom and one modern bathroom.

24-hour property service makes staying at the apartment more secure, and there are also multi-functional workspaces and a beautiful rooftop terrace, suitable for work, meeting friends or relaxing.

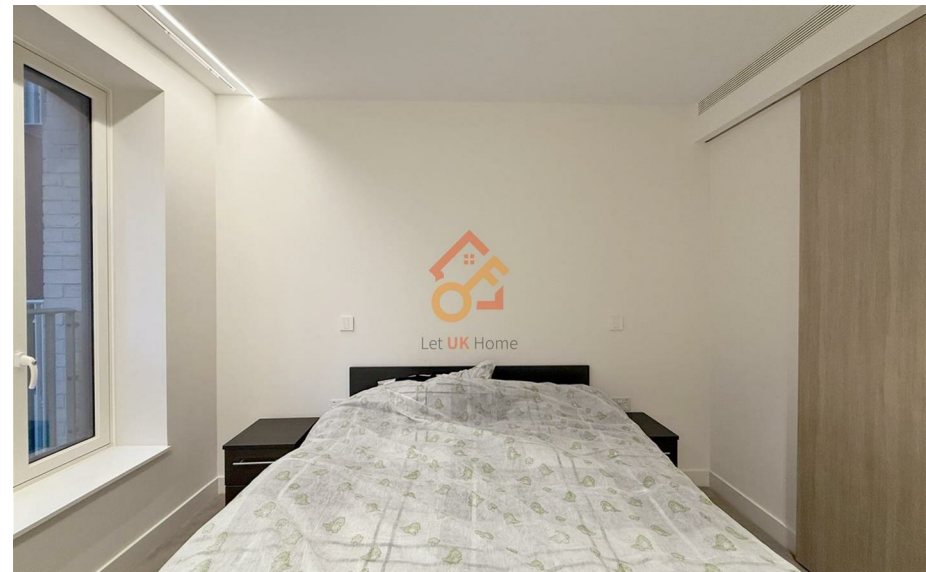
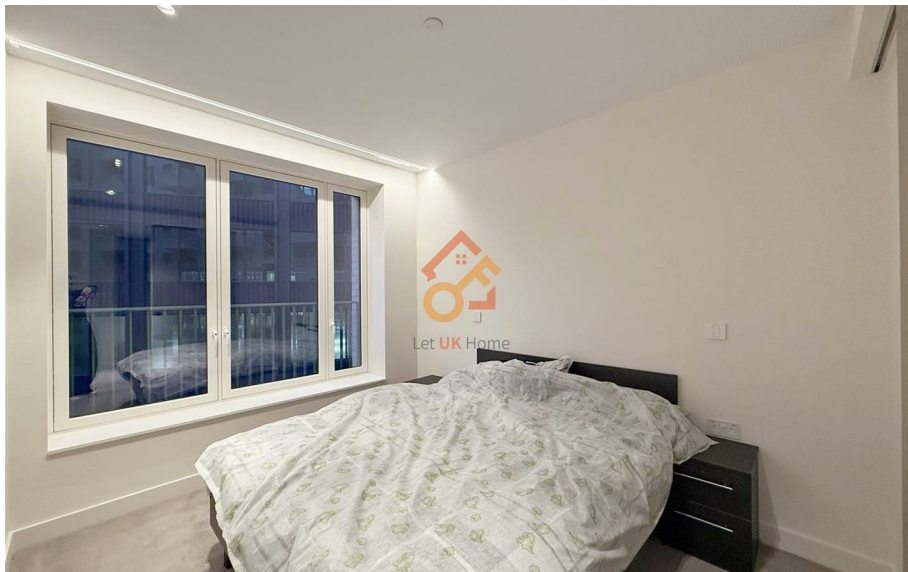
The Coal Drops Yard shopping center around the apartment offers a variety of shopping options, from retail to dining, bars, to technology exhibition areas, with more than 50 stores to meet your daily needs. Pancras Square on the south side of the Regent's Canal also gathers popular restaurants of various flavors, as well as Pancras Square, Lewis Cubitt Park, Gas Tank Park and other park green spaces, providing a good place to spend your leisure time.

Apartment A04.06 Capella Court 1 Lewis Cubitt

£3,500 Per Month



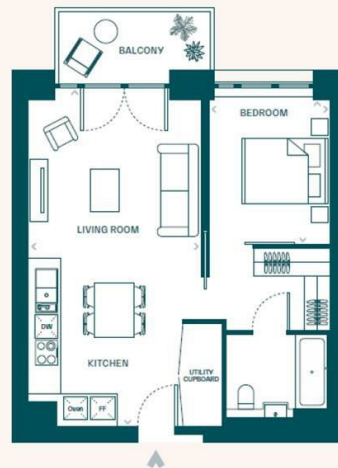
- 4th Floor
- 24h Security
- Close to Local Shops
- Co-working Space
- Private Balcony
- Concierge Service
- Close to Transport Links
- Walking Distance to Universities
- Rooftop Terrace



1 Bedroom apartment: Type 1G

A01.06, A02.06, A03.06, A04.06, A05.06, A06.06, A07.06, A08.06, A09.07, A10.07, A11.07

Total Area	Kitchen/Living	Master bedroom	Balcony
51.8 Sqm	7.69 x 3.93 m	3.27 x 2.76 m	3.46 x 1.66 m
558 Sqft	25' 3" x 12' 11"	10'9" x 9' 0"	11' 4" x 5' 5"



萊英家
Let **UK** Home

6/F Two Kingdom Street

London

W2 6BD

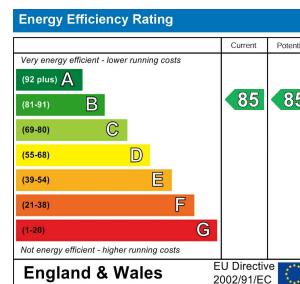
020 4534 8145

pmadmin@letukhome.co.uk

Council Tax Band: E

Local Authority:

Agents Note: Whilst every care has been taken to prepare these particulars, they are for guidance purposes only. All measurements are approximate and are for general guidance purposes only and whilst every care has been taken to ensure their accuracy, they should not be relied upon and potential buyers/tenants are advised to recheck the measurements.



<https://www.letukhome.co.uk/>