



萊英家

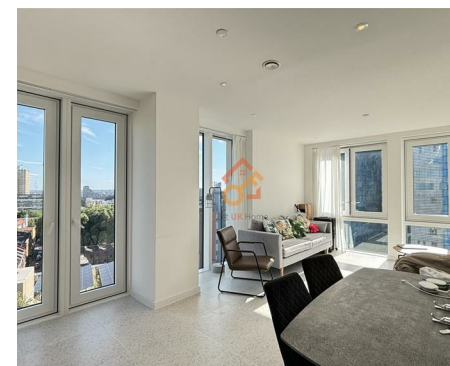
Let UK Home

1 Bedrooms

Flat

Located in London

£2,600 Per Month



pmadmin@letukhome.co.uk

<https://www.letukhome.co.uk/>

020 4534 8145



Apartment 1006, 7, Bouchon Point Cendal Crescent

London | | E1 2FT



Let UK Home are excited to offer this spectacular one bedroom apartment in the heart of Bouchon Point part of The Silk District in Whitechapel.

The flat comprises a spacious open kitchen with a stylishly attached dining area, a magnificent living room, one bright bedroom and one modern bathroom.

The apartment includes 24-hour concierge service, gym, spinning room, screening room, flexible and designed work and study space, etc.

The apartment is just one street away from Whitechapel subway station. At the same time, Whitechapel station is also a transportation hub for the District and Hammersmith & City subway lines. From here, you can quickly reach the City of London, Canary Wharf and other places.

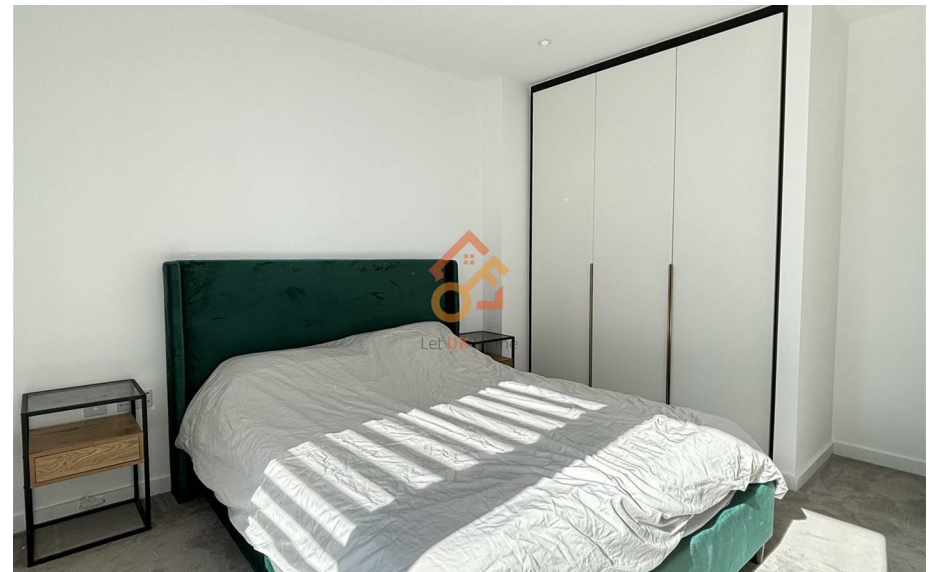
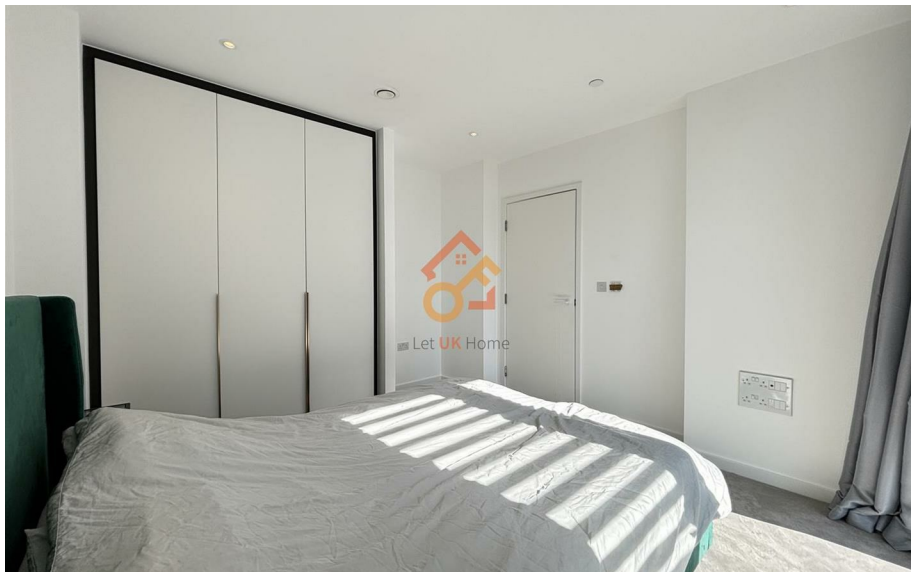
Within walking distance of the apartment, there is a large Sainsbury's shopping center, Asda department store, White Chapel Post Office and the famous Barclays Bank.

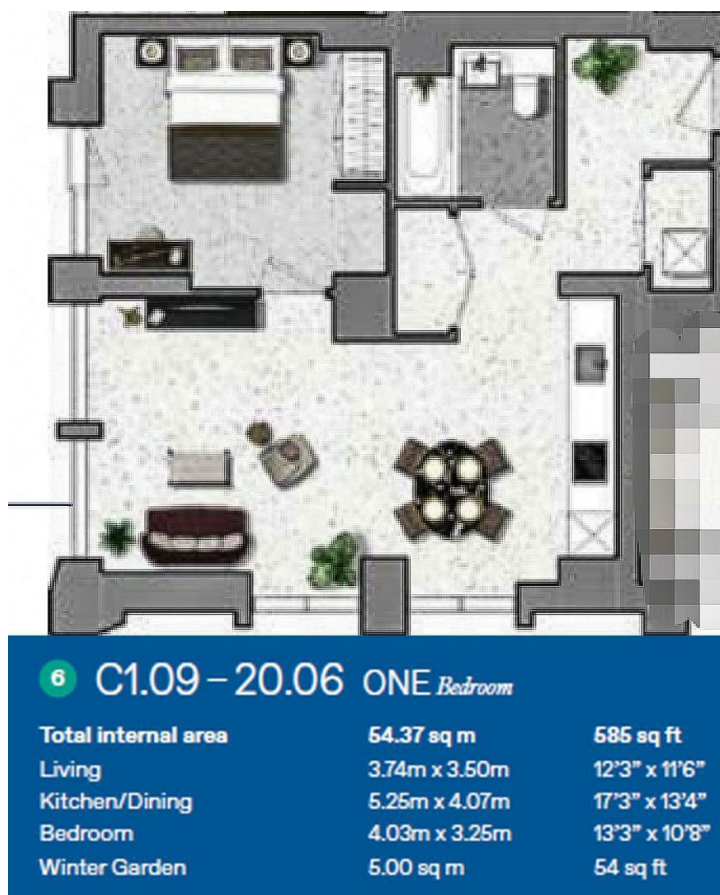
Apartment 1006, 7, Bouchon Point Cendal

£2,600 Per Month



- 10th Floor
- 24h Security
- Cinema & Game Room
- Concierge Service
- The Gym
- Co-working Space





萊英家
Let **UK** Home

6/F Two Kingdom Street

London

W2 6BD

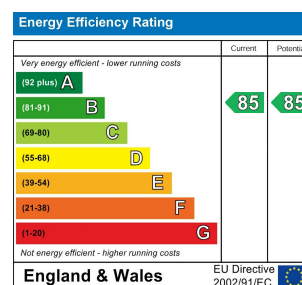
020 4534 8145

pmadmin@letukhome.co.uk

Council Tax Band: E

Local Authority:

Agents Note: Whilst every care has been taken to prepare these particulars, they are for guidance purposes only. All measurements are approximate and are for general guidance purposes only and whilst every care has been taken to ensure their accuracy, they should not be relied upon and potential buyers/tenants are advised to recheck the measurements.



<https://www.letukhome.co.uk/>