



萊英家

Let UK Home

2 Bedrooms

Flat

Located in London

£2,395 Per Month



padmin@letukhome.co.uk

<https://www.letukhome.co.uk/>

020 4534 8145



12 Hemlock Street

London | | E14 0XY



Let UK Home are excited to offer this spectacular two bedroom apartment in the heart of Iris House, part of the Poplar Riverside.

This property comprises a large bright open plan kitchen and living room leading to a large private balcony with great views, two double bedrooms with wardrobe(master en-suite), a large family sized bathroom and ample storage.

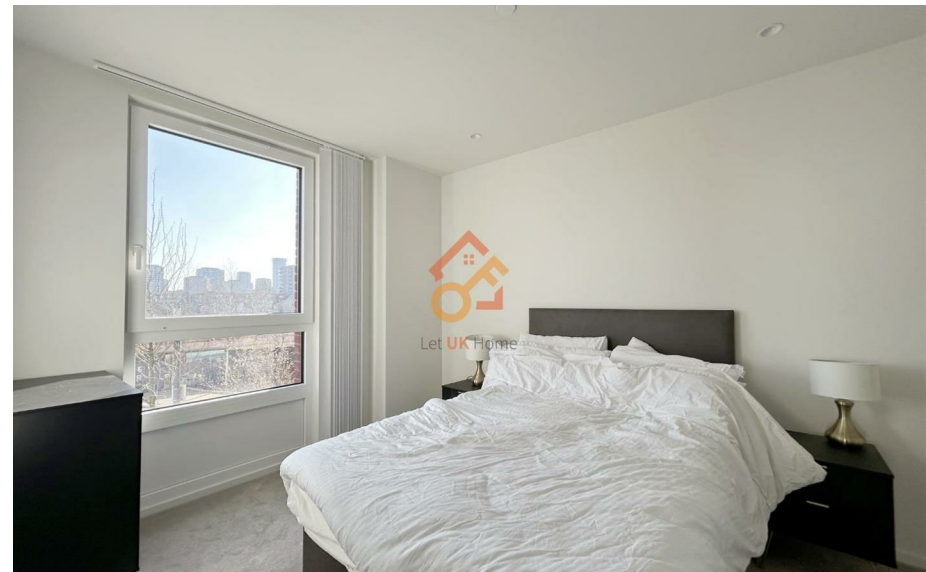
Residents of this exceptional development have exclusive use of the spa including sauna, steam and salt inhalation room, 20m swimming pool and vitality pool with wellness features, experience shower, changing rooms, cinema room, games room and card room, private meeting rooms, co-working space, residents' den lounge, private call booth and so on. Furthermore, residents will also benefit from a 24 hour concierge and an unrivalled selection of shops, bars, restaurants, leisure facilities and beautiful courtyards.

Residents of Poplar Riverside only need a short journey to the bustling business district of Canary Wharf, and a bicycle ride to the famous shopping mall in East London - Westfield. Residents can easily reach the commercial high street Bond Street, Heathrow International Airport.

12 Hemlock Street

£2,395 Per Month

- 1st Floor
- Concierge Service
- Swimming Pool
- Cinema & Game Room
- Treatment Room
- 24h Security
- The Spa
- The Gym
- Sauna & Steam Room
- Co-working Space





萊英家
Let UK Home

6/F Two Kingdom Street
London
W2 6BD

020 4534 8145

pmadmin@letukhome.co.uk



APARTMENT NOS.	6 / 16 / 26 / 36 / 43 / 50 / 57 / 64	
FLOORS	1 / 2 / 3 / 4 / 5 / 6 / 7 / 8	
Internal measurements	67.4 sq m	725.4 sq ft
External measurements	6.0 sq m	64.5 sq ft
Kitchen/Living/Dining	5.19m x 5.12m	17'0" x 16'9"
Primary Bedroom	3.11m x 3.55m	10'2" x 11'7"
Bedroom 2	2.82m x 4.24m	9'3" x 13'10"
Balcony	3.37m x 1.80m	11'0" x 5'10"

- SC Storage/coat cupboard
- S Storage
- C Coat cupboard
- W Wardrobe
- WD Washer/dryer
- U Utility cupboard
- Optional customer upgrade

Depending on the plot number this apartment type may have a handed (mirrored) layout, see floorplates or speak to a sales adviser for more information.
Floorplans are for approximate measurements only. Measurements may vary within a tolerance of 3%. Dimensions are not intended to be used for carpet sizes, appliance sizes or items of furniture. Furniture shown is not included.

POPLAR RIVERSIDE

Council Tax Band: E

Local Authority:

Agents Note: Whilst every care has been taken to prepare these particulars, they are for guidance purposes only. All measurements are approximate and are for general guidance purposes only and whilst every care has been taken to ensure their accuracy, they should not be relied upon and potential buyers/tenants are advised to recheck the measurements.

Energy Efficiency Rating		Current	Potential
Very energy efficient - lower running costs			
(92 plus) A			
(81-91) B		83	83
(69-80) C			
(55-68) D			
(39-54) E			
(21-38) F			
(1-20) G			
Not energy efficient - higher running costs			
England & Wales	EU Directive 2002/91/EC		

<https://www.letukhome.co.uk/>