



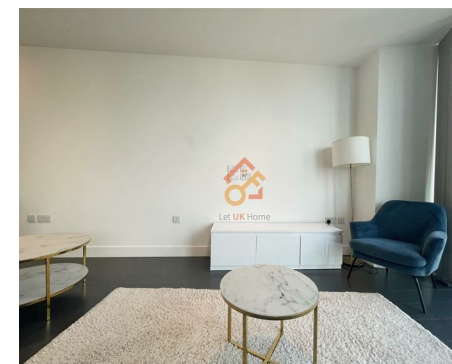
萊英家
Let UK Home

2 Bedrooms

Flat

Located in London

£3,500 Per Month



pmadmin@letukhome.co.uk

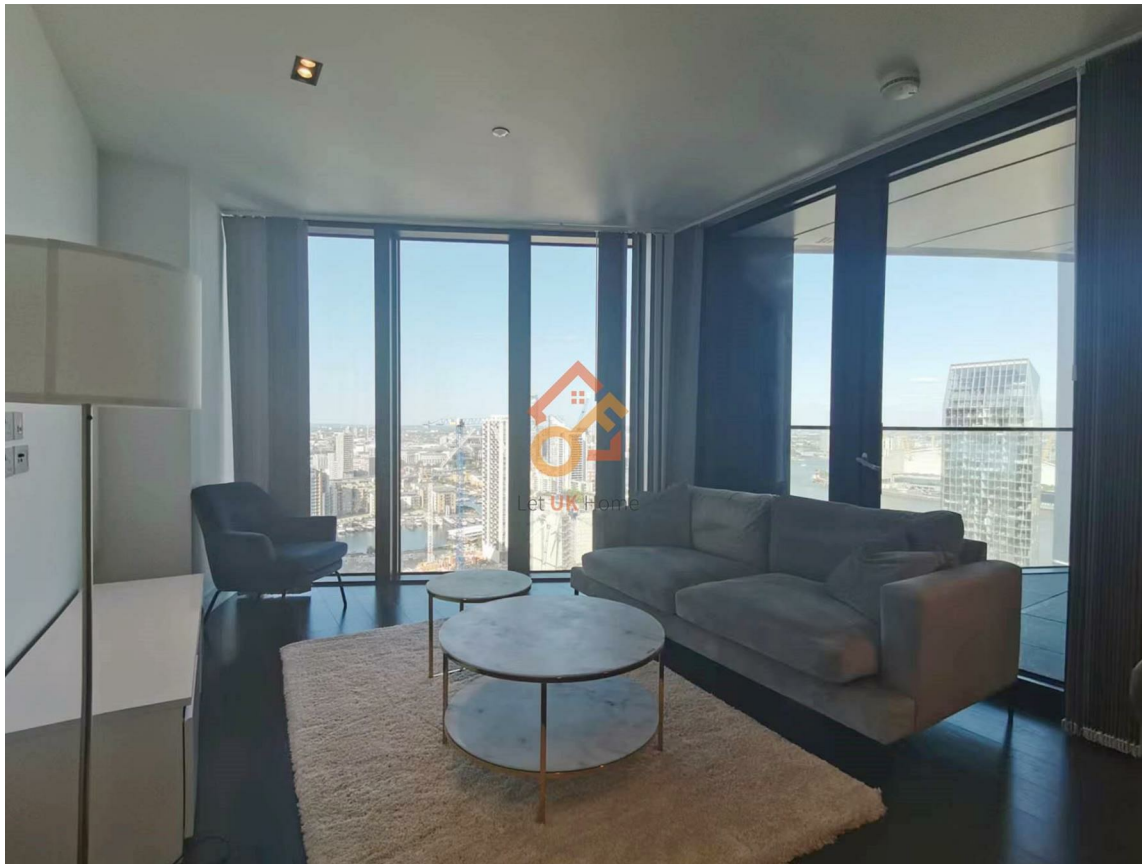
<https://www.letukhome.co.uk/>

020 4534 8145



Flat 2507 Amory Tower 203 Marsh Wall

London | | E14 9ZN



Let UK Home are excited to offer this spectacular 2 bedroom apartment in the heart of Amory Tower part of The Madison in the heart of Canary Wharf.

This property comprises a large bright open plan kitchen and living room leading to a private balcony, two double bedrooms with wardrobes(master en-suite), a large family sized bathroom and ample storage.

The Madison offers much more than luxury Canary Wharf flats. The stunning private lounge is strategically positioned to capture panoramic views of Canary Wharf and spectacular sunsets. The development affords a 24hr concierge service, high tech meeting area, residents lounge, screening room, stylish gym, swimming pool and spa facilities.

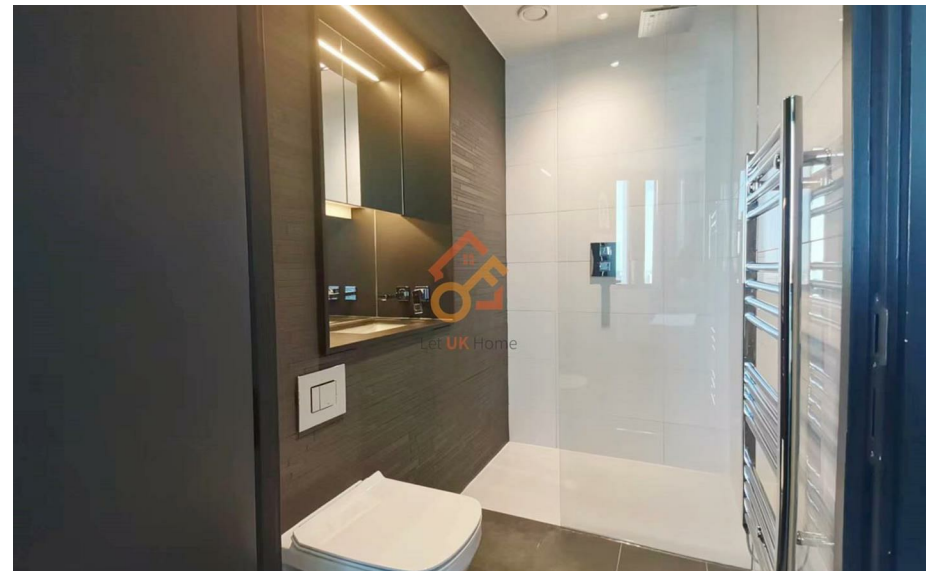
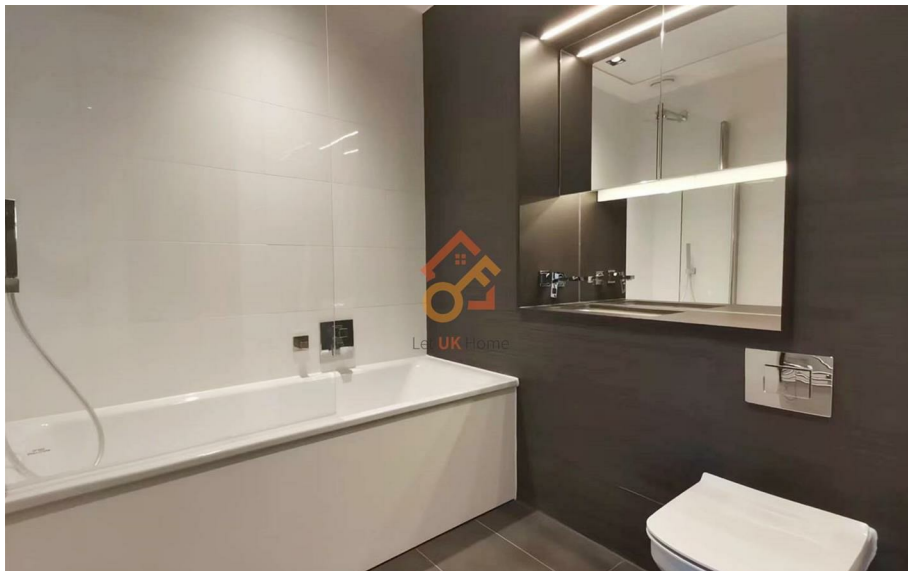
Marsh Wall offers excellent transport links from nearby Canary Wharf and Heron Quays stations, where an abundance of shops, bars and restaurants can be found.

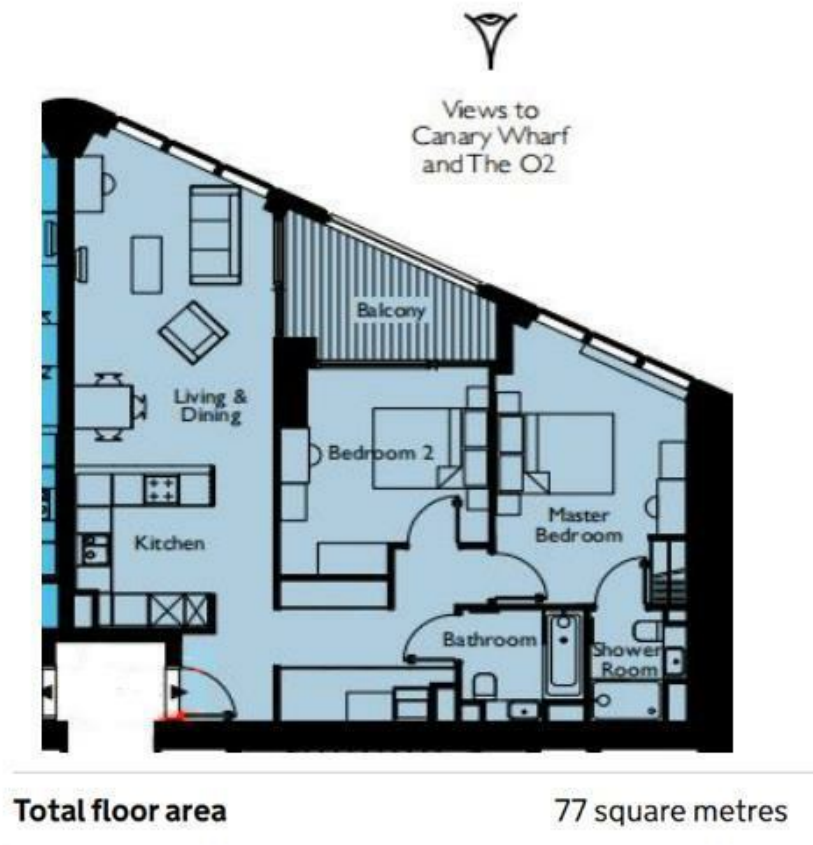
Flat 2507 Amory Tower 203 Marsh Wall

£3,500 Per Month



- 25th Floor
- 24h Security
- Swimming Pool
- Residents Lounge
- Concierge Service
- The Gym
- The Spa





萊英家
Let **UK** Home

6/F Two Kingdom Street

London

W2 6BD

020 4534 8145

pmadmin@letukhome.co.uk

Council Tax Band: F

Local Authority:

Agents Note: Whilst every care has been taken to prepare these particulars, they are for guidance purposes only. All measurements are approximate and are for general guidance purposes only and whilst every care has been taken to ensure their accuracy, they should not be relied upon and potential buyers/tenants are advised to recheck the measurements.

Energy Efficiency Rating		Current	Potential
Very energy efficient - lower running costs			
(92 plus) A			
(81-91) B		84	84
(69-80) C			
(55-68) D			
(39-54) E			
(21-38) F			
(1-20) G			
Not energy efficient - higher running costs			
England & Wales		EU Directive 2002/91/EC	

<https://www.letukhome.co.uk/>