



萊英家

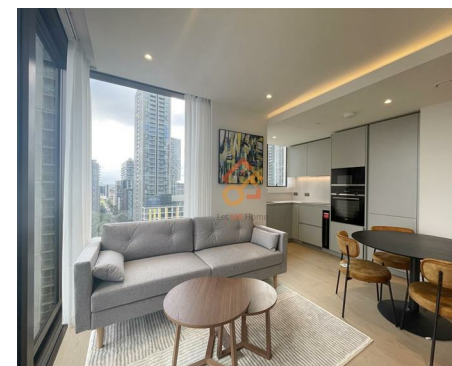
Let UK Home

2 Bedrooms

Flat

Located in London

£3,300 Per Month



pmadmin@letukhome.co.uk

<https://www.letukhome.co.uk/>

020 4534 8145



1107 Harcourt Tower, 67 Marsh Wall

London | | E14 9GS



Let UK Home are excited to offer this spectacular 1 bedroom & 1 studyroom apartment in the heart of Harcourt Tower part of the South Quay Plaza.

This luxurious apartment features a meticulously designed open-plan living, kitchen, and dining area. The bedroom comes with built-in wardrobes, complemented by a spacious family bathroom.

The apartment has a 24-hour concierge service, a leisure and wellness center and a fitness center (with an outdoor hot tub), iGarden-an advanced shared workspace, supporting conference rooms and outdoor work areas, a game room with an independent soundproof karaoke room, a 20-meter swimming pool, a 56th-floor bar and lounge, and a terrace. It is worth mentioning that the 56th-floor bar is one of the highest residential bars in Europe. Residents can overlook Canary Wharf, the Thames, the City of London, etc., and enjoy a beautiful panoramic view.

Harcourt Tower is located in the heart of Canary Wharf. Canary Wharf has a beautiful environment, with multiple parks and cool blue riverside spaces, a total of 2.6 acres of green place, and complete supporting facilities for life, such as many internationally renowned hotels and more than 280 shops, cafes, bars, and restaurants. It is a shopping paradise, with everything from well-known brand stores, commercial streets to shopping malls. There are also many well-known cultural attractions near Canary Wharf, such as Tower Bridge, Royal Observatory and National Maritime Museum. In addition, there are many art centers, museums and theaters in the area, such as Canary Wharf Arts Centre, Museum of London and Royal Institute of British Architects.

1107 Harcourt Tower, 67 Marsh Wall

£3,300 Per Month



- 11th Floor
- 24h Security
- Swimming Pool
- Concierge Service
- The Gym
- Game Room





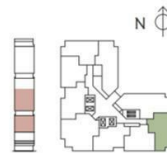
TYPE IE - FLOORS 09 - 28

Living/Dining/Kitchen	14'2" x 14'6"	4.20m x 4.46m
Bedroom	10'8" x 10'3"	3.29m x 3.14m
Study	9'9" x 10'8"	3.02m x 3.30m
Total Internal Area	610 sq ft	56.70 sq m

KEY

• Measurement points C Cupboard U Utility Cupboard W Wardrobe SW Space for Washer WD Washer Dryer

Layouts shown here are for approximate measurements only, they are not necessarily to scale. Exact layout and sizes of property may vary. All measurements may vary within a tolerance of 5%.



萊英家
Let **UK** Home

6/F Two Kingdom Street

London

W2 6BD

020 4534 8145

pmadmin@letukhome.co.uk

Council Tax Band: E

Local Authority:

Agents Note: Whilst every care has been taken to prepare these particulars, they are for guidance purposes only. All measurements are approximate and are for general guidance purposes only and whilst every care has been taken to ensure their accuracy, they should not be relied upon and potential buyers/tenants are advised to recheck the measurements.

Energy Efficiency Rating		Current	Potential
Very energy efficient - lower running costs			
(92 plus) A		86	86
(81-91) B			
(69-80) C			
(55-68) D			
(39-54) E			
(21-38) F			
(1-20) G			
Not energy efficient - higher running costs			
England & Wales		EU Directive 2002/91/EC	

<https://www.letukhome.co.uk/>