



萊英家
Let UK Home

2 Bedrooms

Flat

Located in London

£4,312 Per Month



pmadmin@letukhome.co.uk

<https://www.letukhome.co.uk/>

020 4534 8145



Unit 12, Strathmore Court 143 Park Road

London | | NW8 7HY



Let UK Home presents a rare opportunity to live in a truly stunning two bedroom apartment located in Strathmore Court, St Johns Wood, London, NW8 7HY.

We are pleased to offer this 916 sq ft, second floor, 2 bedroom, 1 bathroom apartment set within a ported building opposite Regents Park. This apartment is ideally suited to young professionals or students due to its proximity to the West End, as well as a number of top colleges and universities such as the London Business School, University of Westminster and the Royal College of Physicians. Strathmore Court is located within a 10 minute walk from St John's Wood underground station (Jubilee Line) and Marylebone underground and overground station (Bakerloo and national railway). Lords Cricket Ground, along with the large variety of cafés, restaurants and boutique shops in St John's Wood are all easily accessible.

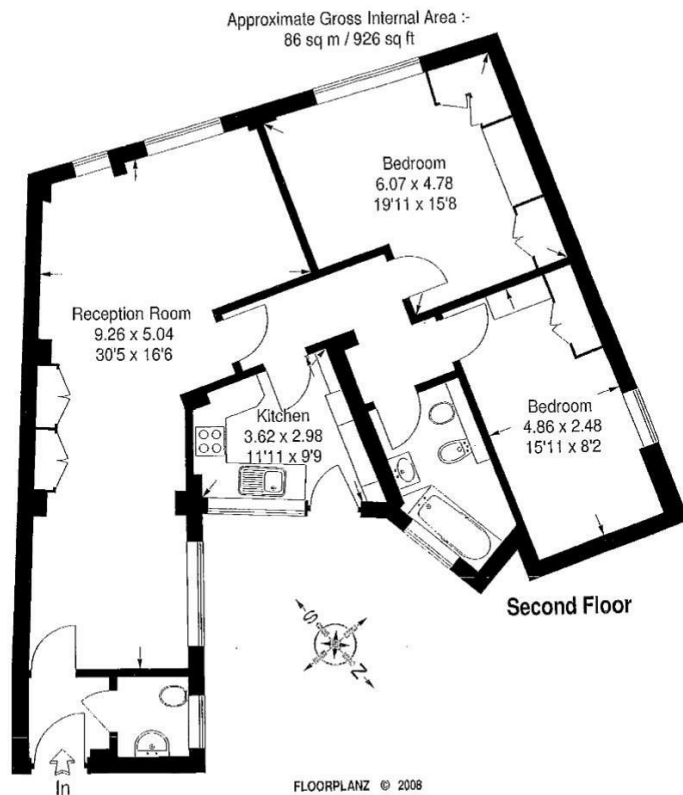
Unit 12, Strathmore Court 143 Park Road

£4,312 Per Month



- Pet Friendly
- CCTV
- Walk to Regent's Park
- 2nd Floor
- 24 hour emergency helpline
- Building Manager & On Site Porter
- Superfast Broadband Available





This illustration is for identification purposes only. Measured & drawn in accordance with RICS / FMA guidelines. Not drawn to scale, unless stated. Dimensions shown are to the nearest 7.5 cm / 3" and are through cupboard / wardrobes to wall surfaces where possible or where indicated by arrow heads. Whilst every care is taken in the preparation of this plan, please check all dimensions shapes & compass bearings before making any decisions reliant upon them.



萊英家
Let **UK** Home

6/F Two Kingdom Street

London

W2 6BD

020 4534 8145

pmadmin@letukhome.co.uk

Council Tax Band: F

Local Authority:

Agents Note: Whilst every care has been taken to prepare these particulars, they are for guidance purposes only. All measurements are approximate and are for general guidance purposes only and whilst every care has been taken to ensure their accuracy, they should not be relied upon and potential buyers/tenants are advised to recheck the measurements.

Energy Efficiency Rating		
	Current	Potential
Very energy efficient - lower running costs		
(92 plus) A		
(81-91) B		
(69-80) C		
(55-68) D		
(39-54) E		
(21-38) F		
(11-20) G		
Not energy efficient - higher running costs		
England & Wales	EU Directive 2002/91/EC	

<https://www.letukhome.co.uk/>