



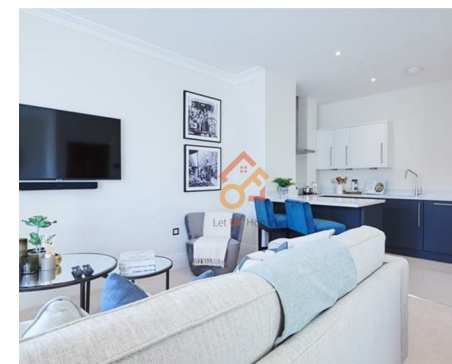
萊英家  
Let UK Home

2 Bedrooms

Flat

Located in London

£3,987 Per Month



[pmadmin@letukhome.co.uk](mailto:pmadmin@letukhome.co.uk)

<https://www.letukhome.co.uk/>

020 4534 8145



# Unit 12 Palace Wharf Rainville Road

London | | W6 9UF



Let UK Home are excited to offer this spectacular 2 bedroom apartment in the heart of Palace Wharf on the River Thames.

A stunning brand new interior designed, two bedroom, two bathroom first-floor apartment facing the courtyard set within this newly converted, warehouse style, gated development on the River Thames.

The apartment boasts a bright open plan kitchen and living area, two bedrooms with en suite bathrooms and separate WC. The fully fitted Metris Kitchen is complete with Miele appliances including an integrated dishwasher, washer/dryer, full height fridge freezer, oven, hob, and integrated extractor fan as well as a wine cooler. The bathrooms comprise of full bathroom suites with underfloor heating whilst the bedrooms boast bespoke mirrored wardrobes and automatic lighting. Further benefits of the apartment include a Crestron audio-visual system, a digital video door entry system, and pre-wiring for Sky + TV.

With its riverside location, Palace Wharf is also conveniently close to a number of transport links including Hammersmith Overground and Underground Station, Barons Court, Putney Bridge, and Fulham Broadway Underground Stations, along with several regular and varied bus services which further improve accessibility.

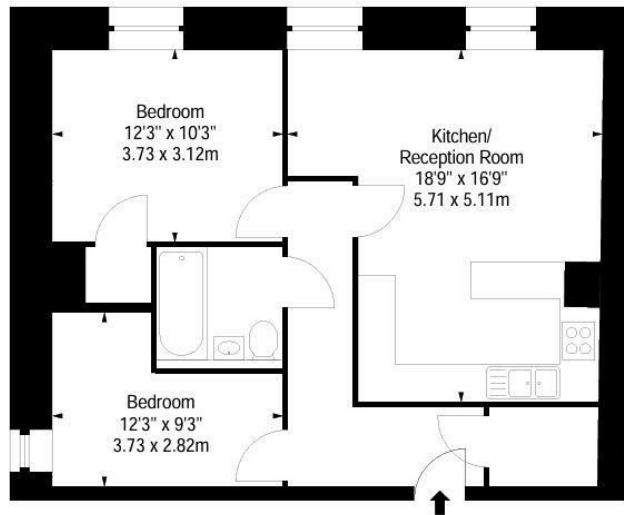
# Unit 12 Palace Wharf Rainville Road

£3,987 Per Month



- 1st Floor
- Available furnished or unfurnished
- Secure parking available
- On-site building manager
- Riverside location
- CCTV
- Flexible rental terms
- Key phone entry system
- 24-hour emergency & maintenance service
- New build gated development





FIRST FLOOR

<p>APPROX. GROSS INTERNAL AREA *</p> <p>667 FT<sup>2</sup> - 61.96 M<sup>2</sup></p>	<p>Property Details:</p> <p><b>FLAT 12</b>  <b>PALACE WHARF</b>  <b>RAINVILLE ROAD</b>  <b>LONDON</b>  <b>W6</b></p> <p>Plans Drawn: 06.12.2017</p>
--	---



6/F Two Kingdom Street  
 London  
 W2 6BD

020 4534 8145

pmadmin@letukhome.co.uk

**Council Tax Band: D**

**Local Authority:**

Agents Note: Whilst every care has been taken to prepare these particulars, they are for guidance purposes only. All measurements are approximate and are for general guidance purposes only and whilst every care has been taken to ensure their accuracy, they should not be relied upon and potential buyers/tenants are advised to recheck the measurements.

Energy Efficiency Rating		
	Current	Potential
Very energy efficient - lower running costs		
(92 plus) <b>A</b>		
(81-91) <b>B</b>		
(69-80) <b>C</b>		
(55-68) <b>D</b>		
(39-54) <b>E</b>		
(21-38) <b>F</b>		
(1-20) <b>G</b>		
Not energy efficient - higher running costs		
England & Wales		
EU Directive 2002/91/EC		

<https://www.letukhome.co.uk/>