



萊英家

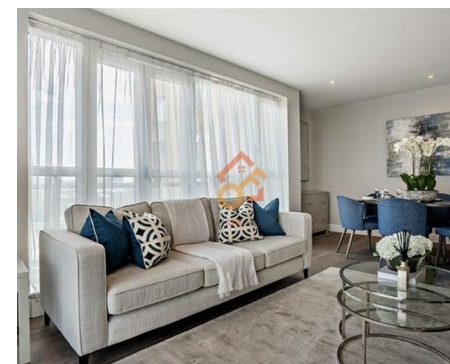
Let **UK** Home

2 Bedrooms

Flat

Located in London

£4,139 Per Month



[pmadmin@letukhome.co.uk](mailto:pmadmin@letukhome.co.uk)

<https://www.letukhome.co.uk/>

020 4534 8145



# Unit 23, Circus Apartments 39 Westferry Circus

London | | E14 8RW



Let UK Home are excited to offer this spectacular 2 bedroom apartment in the heart of Circus Apartments nestled within the upper deck of Canary Wharf, London's bustling financial center.

This luxurious interior designed two-bedroom, two bathroom apartment on the second floor of this waterfront estate is set over 947 SqFt. This spacious apartment with modern open-plan living space is fully furnished and enjoys wooden flooring and dedicated dining area in the reception room.

The space boasts floor to ceiling windows that allow in an abundance of natural light, while a private balcony with dramatic views of the impressive Canary Wharf skyline provide a relaxing setting.

A separate fully equipped kitchen with stylish LED under cabinet mood lighting, full-sized fridge/freezers, electric ovens with gas hobs, microwave ovens, external extractors, 1.5 sinks with food waste disposal, dishwashers, and washer dryers, so that you have everything you need from the day you move in.

The Bedrooms are spacious with king size beds and fully furnished with bespoke fitted mirrored wardrobes, luxury carpet and furnishings.

A new AV systems has been installed, including fibre broadband, large 55" LG Smart TV in the reception room and a Smart TVs in the bedrooms.

The apartment is ideally positioned within easy access of Zone 2 stations of

# Unit 23, Circus Apartments 39 Westferry Circus

£4,139 Per Month



- 2nd Floor
- Air Con
- 24h Security
- Parking Space
- The Gym
- Broadband
- Concierge Service
- Residents Lounge
- Lifts
- The Spa





萊英家  
Let **UK** Home

6/F Two Kingdom Street  
London  
W2 6BD

020 4534 8145

pmadmin@letukhome.co.uk

**Council Tax Band: E**

**Local Authority:**

Agents Note: Whilst every care has been taken to prepare these particulars, they are for guidance purposes only. All measurements are approximate and are for general guidance purposes only and whilst every care has been taken to ensure their accuracy, they should not be relied upon and potential buyers/tenants are advised to recheck the measurements.

Energy Efficiency Rating		
	Current	Potential
Very energy efficient - lower running costs		
(92 plus) <b>A</b>		
(81-91) <b>B</b>		
(69-80) <b>C</b>	76	78
(55-68) <b>D</b>		
(39-54) <b>E</b>		
(21-38) <b>F</b>		
(1-20) <b>G</b>		
Not energy efficient - higher running costs		
England & Wales	EU Directive 2002/91/EC	

<https://www.letukhome.co.uk/>