

萊英家

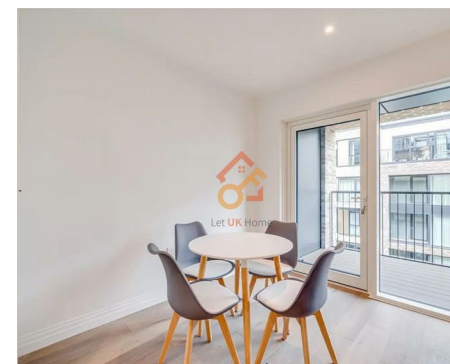
Let UK Home

2 Bedrooms

Flat

Located in London

£3,699 Per Month



padmin@letukhome.co.uk

<https://www.letukhome.co.uk/>

020 4534 8145



Apartment 30 Savoy House, 5 Lockgate Road

London | | SW6 2WH



Let UK Home are excited to offer this spectacular two-bedroom apartment in the heart of Savoy House, part of the Chelsea Creek, located in Fulham SW6 2WH.

This property comprises a large bright open plan kitchen and living room leading to a large private balcony with great views, two double bedrooms with wardrobes (master en-suite), a large family sized bathroom and ample storage.

Residents of this exceptional development have exclusive use of Halcyon Club which boasts a private cinema, meeting room, and the crown jewel: a 31st-floor sky lounge and terrace with stunning city views. Residents also enjoy access to a fitness centre, swimming pool, and spa with sauna and steam room. Furthermore, residents will also benefit from a 24 hour concierge and an unrivalled selection of shops, bars, restaurants, leisure facilities and beautiful landscaped courtyards.

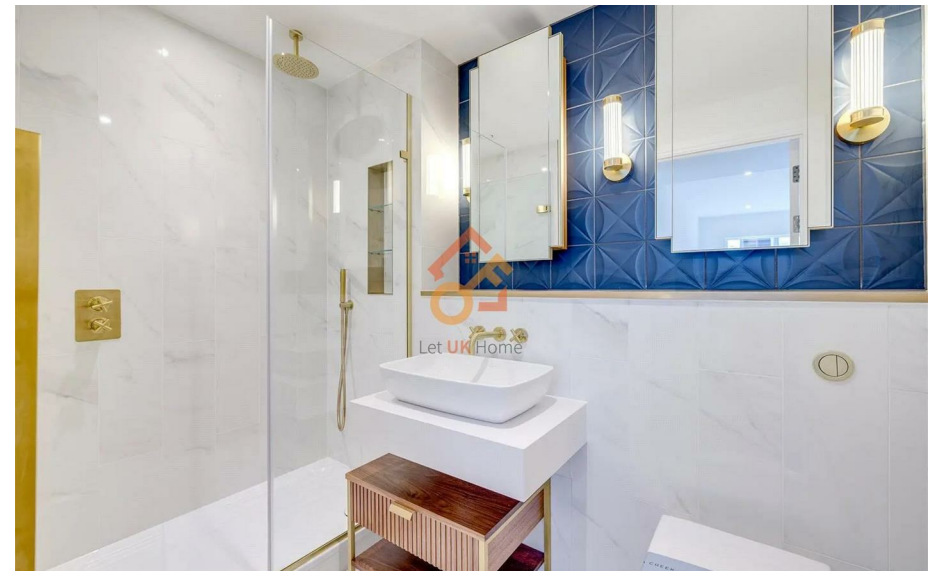
Located in Zone 2, the apartment offers transport links from the nearby Imperial Wharf station as well as Fulham Broadway. Shops, restaurants and bars are all located a short walk away on the nearby Kings Road, Sloane Street and Westfield Shopping city.

Apartment 30 Savoy House, 5 Lockgate Road

£3,699 Per Month



- 5th Floor
- 24h Security
- Swimming Pool
- Cinema & Game Room
- Treatment Room
- Concierge Service
- The Spa
- The Gym
- Sauna & Steam Room
- Residents Lounge



户型参数:

WESTWOOD HOUSE
APARTMENT 1059



2 Bedrooms
Fifth Floor
Available
Price: £1,370,000

DIMS	M / FT
Living / Dining Area	5.8m x 3.7m
Kitchen	3.4m x 2.6m
Bedroom	3.0m x 4.2m
Bedroom 2	2.8m x 4.1m
Internal Area	78.6 sq m
Balcony	8.6 sq m
Total Area	87.2 sq m

Floor Plan
Interiors
Customer Choices
Views
Specification



萊英家
Let UK Home

6/F Two Kingdom Street

London

W2 6BD

020 4534 8145

pmadmin@letukhome.co.uk

Council Tax Band: G

Local Authority: Hammersmith And Fulham

Agents Note: Whilst every care has been taken to prepare these particulars, they are for guidance purposes only. All measurements are approximate and are for general guidance purposes only and whilst every care has been taken to ensure their accuracy, they should not be relied upon and potential buyers/tenants are advised to recheck the measurements.

Energy Efficiency Rating		Current	Potential
Very energy efficient - lower running costs			
(92 plus) A			
(81-91) B		85	85
(69-80) C			
(55-68) D			
(39-54) E			
(21-38) F			
(1-20) G			
Not energy efficient - higher running costs			
England & Wales		EU Directive 2002/91/EC	

<https://www.letukhome.co.uk/>