



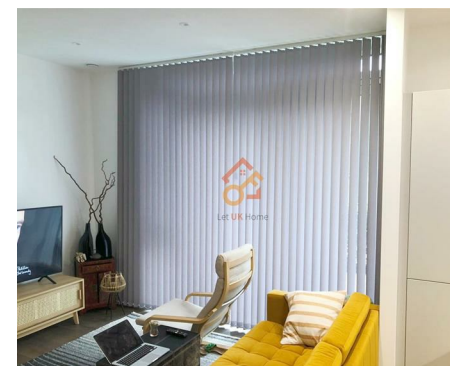
萊英家
Let UK Home

1 Bedrooms

Flat

Located in London

£2,450 Per Month



padmin@letukhome.co.uk

<https://www.letukhome.co.uk/>

020 4534 8145



Flat 217, Hartingtons Court Coster Avenue

London | | N4 2WQ



Let UK Home are excited to offer this spectacular one bedroom apartment in the heart of Hartingtons Court part of the Woodberry Down.

The flat comprises a spacious open kitchen with a stylishly attached dining area, a magnificent living room leading to a large private balcony, one bright bedroom with built-in wardrobes and one modern bathroom.

Residents of Woodberry Down will have access to a host of residents' facilities and services including 24-hour concierge, pool, spa, gymnasium, and residents' lounge.

Manor House underground station and Stamford Hi overground railway station are within walking distance of the apartment, connecting the three important rail transit lines of Piccadilly Line, Victoria Line and Overground, and can quickly reach Central Saint Martins College of Art and Design, University of the Arts London, London School of Economics, University College London, and Imperial College London.

Flat 217, Hartingtons Court Coster Avenue

£2,450 Per Month



- Ground Floor
- 24h Security
- The Gym
- Residents Lounge
- Concierge Service
- Swimming Pool
- Private Balcony





| | | |
|---------------------|----------------|-----------|
| BG.03 / 1 BED | 856 sq ft | 79.5 sqm |
| Apartment Area | 552 sq ft | 51.3 sqm |
| External Area | 304 sq ft | 28.2 sqm |
| Kitchen/Living Area | 17'1" x 16'5" | 5.2 x 5.0 |
| Bedroom | 11'2" x 9'2" | 3.4 x 2.8 |
| Terrace | 10'6" x 28'10" | 3.2 x 8.8 |



萊英家
Let **UK** Home

6/F Two Kingdom Street

London

W2 6BD

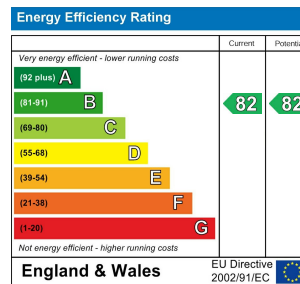
020 4534 8145

pmadmin@letukhome.co.uk

Council Tax Band: C

Local Authority:

Agents Note: Whilst every care has been taken to prepare these particulars, they are for guidance purposes only. All measurements are approximate and are for general guidance purposes only and whilst every care has been taken to ensure their accuracy, they should not be relied upon and potential buyers/tenants are advised to recheck the measurements.



<https://www.letukhome.co.uk/>