



萊英家
Let UK Home

1 Bedrooms

Flat

Located in London

£2,850 Per Month



padmin@letukhome.co.uk

<https://www.letukhome.co.uk/>

020 4534 8145



40 Bowery Apartments Fountain Park Way

London | | W12 7HZ



Let UK Home are excited to offer this spectacular one bedroom apartment in the heart of Bowery Apartment part of the White City Living.

The flat comprises a spacious open kitchen with a stylishly attached dining area, a magnificent living room leading to a large private balcony, one bright bedroom with built-in wardrobes and one modern bathroom.

Residents of this exceptional development have exclusive use of indoor swimming pool, gymnasium, two 12-seater cinemas, private dining room, residents lounge and rooftop bar. Residents of this exceptional development will benefit from a 24 hour concierge and an unrivalled selection of shops, bars, restaurants, leisure facilities and beautiful landscaped courtyards.

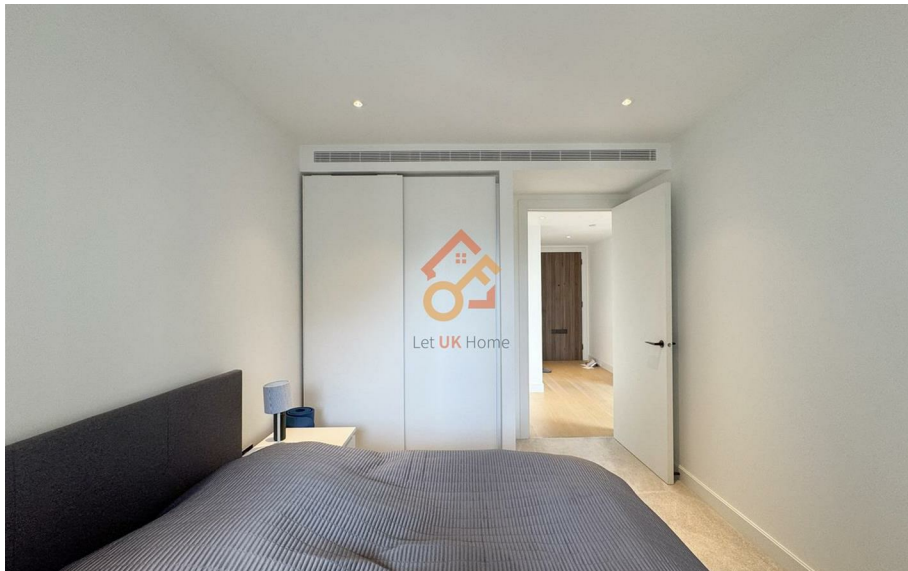
White City Living is surrounded by world-class retail, entertainment, education, cultural and commercial venues, and is within walking distance of Europe's largest shopping mall, Westfield, with more than 500 shops, cinemas, restaurants and supermarkets, providing a wealth of shopping, dining and entertainment options to meet residents daily shopping and leisure needs. Not only that, there are many theatres, concert halls, art galleries and museums nearby such as the Design Museum, Leighton House Museum, Shepherd's Bush Empire, Bush Hall and The Bush Theatre, providing residents with a wealth of cultural and entertainment options. In addition, there are a lot of green spaces in the development, and there are Ravenscourt Park and Holland Park nearby, providing residents with great places for leisure and entertainment.

40 Bowery Apartments Fountain Park Way

£2,850 Per Month



- 8th Floor
- 24h Security
- Swimming Pool
- Cinema & Game Room
- Private Dining Room
- Concierge Service
- The Spa
- Residents Lounge
- The Gym





Internal measurements	52.9 m ²	569 sq ft
External measurements	5.9 m ²	63.5 sq ft
Kitchen / Living / Dining	6.12 x 5.07 m	20 ft 0" x 16 ft 7"
Bedroom 1	3.96 x 2.80 m	12 ft 11" x 9 ft 2"
Balcony	4.01 x 1.47 m	13 ft 1" x 4 ft 10"

PLOTS A0204, A0304, A0404, A0504, A0604, A0704, A0804, A0904, A1004, A1104



萊英家
Let **UK** Home

6/F Two Kingdom Street
London
W2 6BD

020 4534 8145

pmadmin@letukhome.co.uk

Council Tax Band: E

Local Authority:

Agents Note: Whilst every care has been taken to prepare these particulars, they are for guidance purposes only. All measurements are approximate and are for general guidance purposes only and whilst every care has been taken to ensure their accuracy, they should not be relied upon and potential buyers/tenants are advised to recheck the measurements.

Energy Efficiency Rating		Current	Potential
Very energy efficient - lower running costs			
(92 plus) A			
(81-91) B		84	84
(69-80) C			
(55-68) D			
(39-54) E			
(21-38) F			
(1-20) G			
Not energy efficient - higher running costs			
England & Wales		EU Directive 2002/91/EC	

<https://www.letukhome.co.uk/>