



萊英家
Let UK Home

1 Bedrooms

Flat

Located in London

£2,350 Per Month



padmin@letukhome.co.uk

<https://www.letukhome.co.uk/>

020 4534 8145



Flat 203, Maine Tower 9 Harbour Way Canary Wharf

London | | E14 9DX



Let UK Home are excited to offer this spectacular one bedroom apartment in Maine Tower part of the Harbour Central, just minutes from the heart of Canary Wharf, one of the two financial nerve centres of London.

The flat comprises a spacious open kitchen with a stylishly attached dining area, a magnificent living room leading to a large private balcony with great views, one bright bedroom with built-in wardrobes, one modern bathroom and ample storage.

Residents will have full access to Club Maine located within a 6 storey link building which integrates with the tower itself. Club Maine will provide an exclusive array of leisure and lifestyle facilities to include: interior designed, art deco styled double height lounge reception with concierge and private library, health spa with sauna, steam room and spa relaxation and treatment suite, fully equipped gymnasium with personal trainer facility, pilates fitness and well being studio, private boardroom and business centre, lavish interior designed club lounge with fabulous New York eclectic style champagne and cocktail bar, 20 seat screening theatre with availability for residents private hire, club lounges, library and cocktail bar designed and themed by Nicola Fontanella.

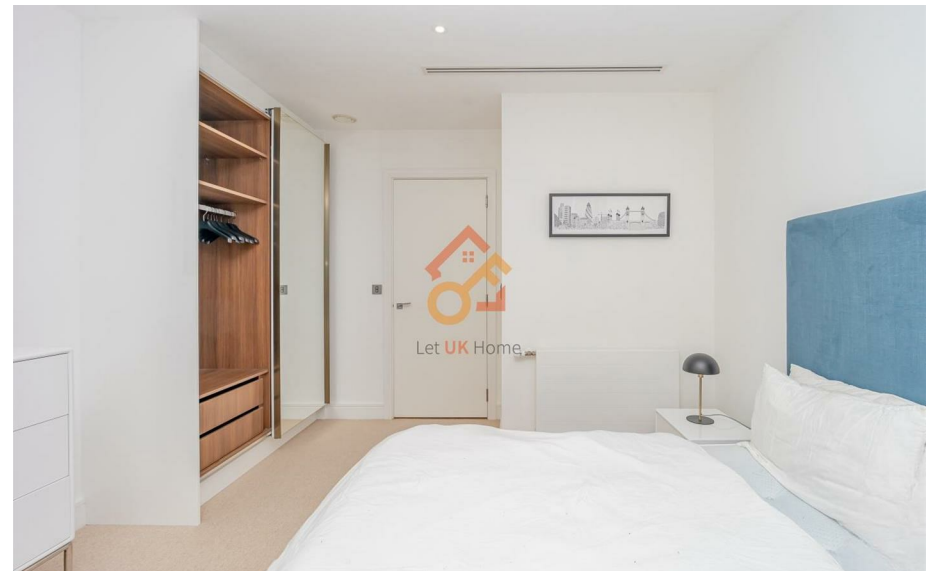
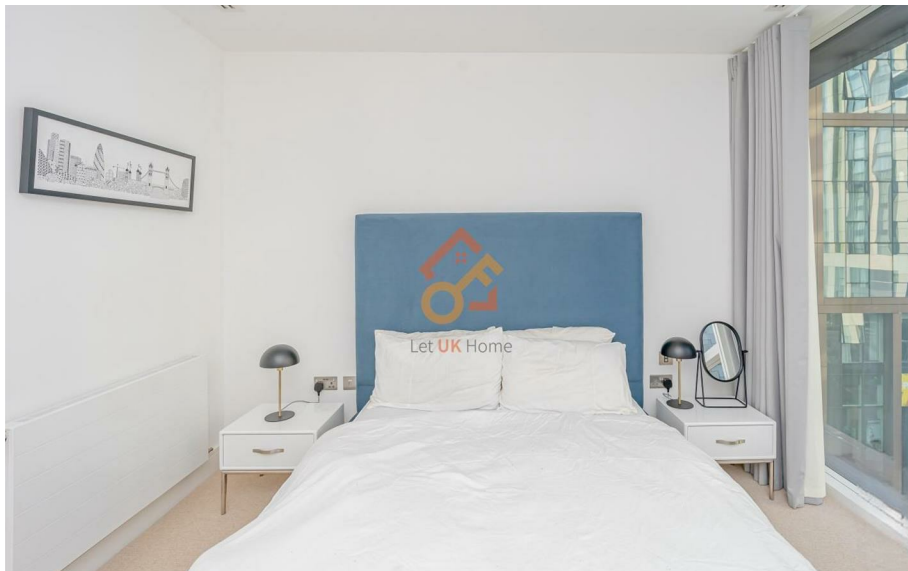
Residents of Harbour Central will be conveniently placed to explore all that Canary Wharf has to offer. Situated in the centre of the West India Docks, Canary Wharf is the thriving centre of the London Docklands and has a fantastic array of shops, restaurants, bars and parks.

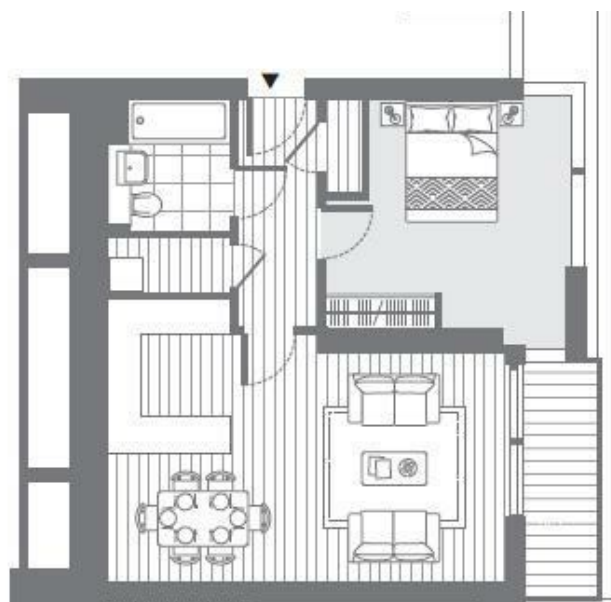
Flat 203, Maine Tower 9 Harbour Way

£2,350 Per Month



- 2nd Floor
- 24h Security
- Sauna & Steam Room
- Cinema & Game Room
- Treatment Room
- Concierge Service
- The Spa
- The Gym
- Residents Lounge





1 bed apartment

Total area
56.0 sq.m. 603 sq.ft.



萊英家
Let **UK** Home

6/F Two Kingdom Street

London

W2 6BD

020 4534 8145

pmadmin@letukhome.co.uk

Council Tax Band: E

Local Authority:

Agents Note: Whilst every care has been taken to prepare these particulars, they are for guidance purposes only. All measurements are approximate and are for general guidance purposes only and whilst every care has been taken to ensure their accuracy, they should not be relied upon and potential buyers/tenants are advised to recheck the measurements.

Energy Efficiency Rating		
	Current	Potential
Very energy efficient - lower running costs		
(92 plus) A		
(81-91) B	85	85
(69-80) C		
(55-68) D		
(39-54) E		
(21-38) F		
(1-20) G		
Not energy efficient - higher running costs		
England & Wales	EU Directive 2002/91/EC	

<https://www.letukhome.co.uk/>