



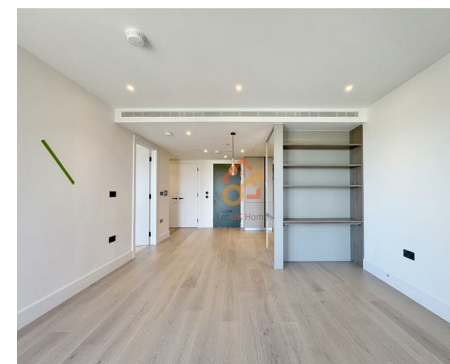
萊英家
Let UK Home

1 Bedrooms

Flat

Located in London

£3,200 Per Month



pmadmin@letukhome.co.uk

<https://www.letukhome.co.uk/>

020 4534 8145



U09.02 Westmont Apartments Fountain Park Way

London | | W12 7SF



Let UK Home are excited to offer this brand new one bedroom apartment in the heart of Westmont Apartment part of the White City Living.

The flat comprises a spacious open kitchen with a stylishly attached dining area, a magnificent living room leading to a large private balcony with great views, one bright bedroom with built-in wardrobes, one modern bathroom and ample storage.

Residents of this exceptional development have exclusive use of indoor swimming pool, gymnasium, two 12-seater cinemas, private dining room, residents lounge and rooftop bar. Residents of this exceptional development will benefit from a 24 hour concierge and an unrivalled selection of shops, bars, restaurants, leisure facilities and beautiful landscaped courtyards.

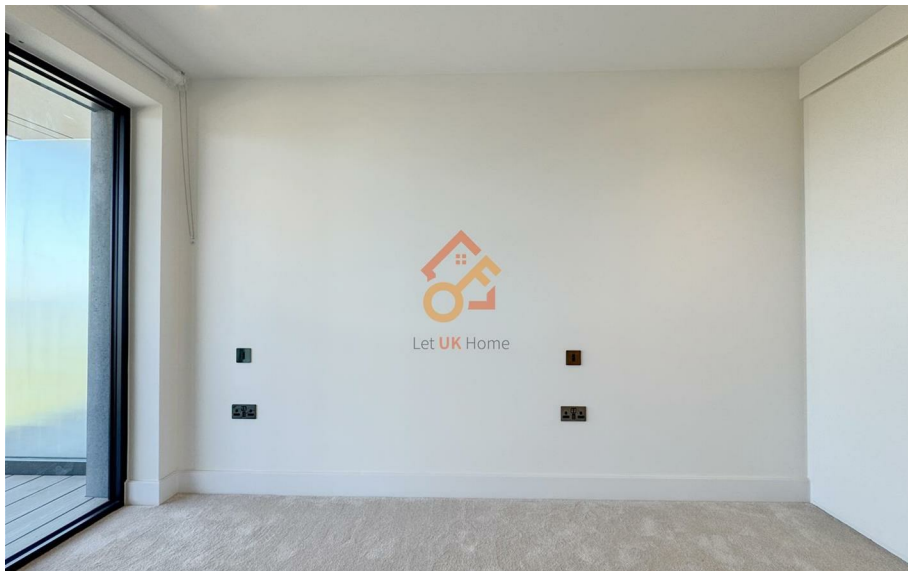
White City Living is surrounded by world-class retail, entertainment, education, cultural and commercial venues, and is within walking distance of Europe's largest shopping mall, Westfield, with more than 500 shops, cinemas, restaurants and supermarkets, providing a wealth of shopping, dining and entertainment options to meet residents daily shopping and leisure needs. Not only that, there are many theatres, concert halls, art galleries and museums nearby such as the Design Museum, Leighton House Museum, Shepherd's Bush Empire, Bush Hall and The Bush Theatre, providing residents with a wealth of cultural and entertainment options. In addition, there are a lot of green spaces in the development, and there are Ravenscourt Park and Holand Park nearby, providing residents with great places for leisure and entertainment.

U09.02 Westmont Apartments Fountain Park Way

£3,200 Per Month



- 9th Floor
- 24h Security
- Swimming Pool
- Cinema & Game Room
- Private Dining Room
- Concierge Service
- The Spa
- Residents Lounge
- The Gym



WESTMONT APARTMENTS APARTMENT U.09.02

1 Bedroom
Ninth Floor
Sold
Palette: Pebble
Floor: Benon/Paper Moon

Kitchen / Dining Room	2.50m x 3.98m	8'2" x 13'1"
Living Room	4.05m x 3.98m	13'4" x 13'1"
Bedroom	4.30m x 2.90m	14'1" x 9'6"
Internal Area	50.7 sq m	546 sq ft
Balcony	1.73m x 2.76m	5'8" x 9'1"
External Area	5.1 sq m	55 sq ft

PLANS
INTERIORS
MATERIAL CHOICES
FLOORING
CARPET
STYLE IT
VIEWS
SPECIFICATION



Photoplans shown for White City Living are for approximate measurements only. Exact layout and sizes may vary. All measurements may vary within a tolerance of 5%. To increase legibility these plans have been sized to fit the page; therefore each plan may be at a different scale to others within this brochure. The dimensions are not intended to be used for carpet sizes, appliance sizes or items of furniture. Kitchen appliance/sink positions indicated are for guidance only. External cladding and window/mulion locations and sizing are indicative and subject to change.



萊英家
Let **UK** Home

6/F Two Kingdom Street
London
W2 6BD

020 4534 8145

pmadmin@letukhome.co.uk

Council Tax Band: New Build

Local Authority:

Agents Note: Whilst every care has been taken to prepare these particulars, they are for guidance purposes only. All measurements are approximate and are for general guidance purposes only and whilst every care has been taken to ensure their accuracy, they should not be relied upon and potential buyers/tenants are advised to recheck the measurements.

Energy Efficiency Rating		Current	Potential
Very energy efficient - lower running costs			
(92 plus)	A		
(81-91)	B		
(69-80)	C		
(55-68)	D		
(39-54)	E		
(21-38)	F		
(1-20)	G		
Not energy efficient - higher running costs			
England & Wales		EU Directive 2002/91/EC	

<https://www.letukhome.co.uk/>