



萊英家

Let **UK** Home

1 Bedrooms

Flat

Located in London

£2,550 Per Month



pmadmin@letukhome.co.uk

<https://www.letukhome.co.uk/>

020 4534 8145



Flat 1106, Bouchon Point 7 Cendal Crescent

London | | E1 2FT



Let UK Home are excited to offer this spectacular one bedroom apartment in the heart of Bouchon Point part of The Silk District in Whitechapel.

The flat comprises a spacious open kitchen with a stylishly attached dining area, a magnificent living room, one bright bedroom and one modern bathroom.

The apartment includes 24-hour concierge service, gym, spinning room, screening room, flexible and designed work and study space, etc.

The apartment is just one street away from Whitechapel subway station. At the same time, Whitechapel station is also a transportation hub for the District and Hammersmith & City subway lines. From here, you can quickly reach the City of London, Canary Wharf and other places.

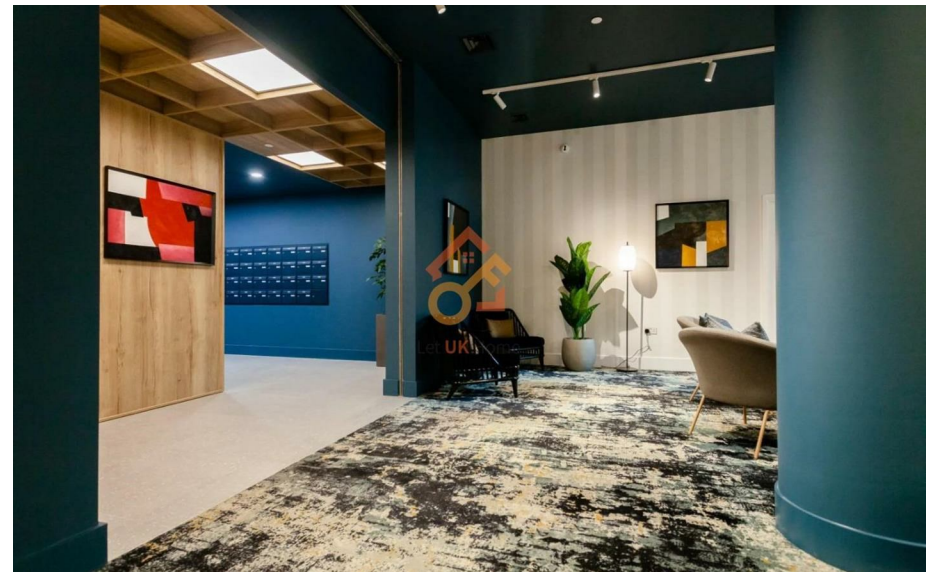
Within walking distance of the apartment, there is a large Sainsbury's shopping center, Asda department store, White Chapel Post Office and the famous Barclays Bank.

Flat 1106, Bouchon Point 7 Cendal Crescent

£2,550 Per Month

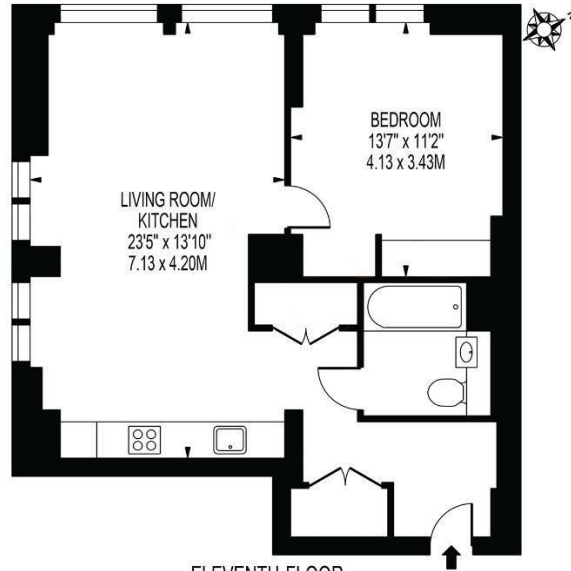


- 11th Floor
- 24h Security
- Cinema & Game Room
- Concierge Service
- The Gym



BOUCHON POINT

APPROXIMATE GROSS INTERNAL FLOOR AREA: 619 SQ FT - 57.47 SQ M



THIS FLOOR PLAN SHOULD BE USED AS A GENERAL OUTLINE FOR GUIDANCE ONLY AND DOES NOT CONSTITUTE IN WHOLE OR IN PART AN OFFER OR CONTRACT. ANY INTENDING PURCHASER OR LESSEE SHOULD SATISFY THEMSELVES BY INSPECTION, SEARCHES, ENQUIRIES AND FULL SURVEY AS TO THE CORRECTNESS OF EACH STATEMENT. ANY AREAS, MEASUREMENTS OR DISTANCES QUOTED ARE APPROXIMATE AND SHOULD NOT BE USED TO VALUE A PROPERTY OR BE THE BASIS OF ANY SALE OR LET.



萊英家
Let UK Home

6/F Two Kingdom Street

London

W2 6BD

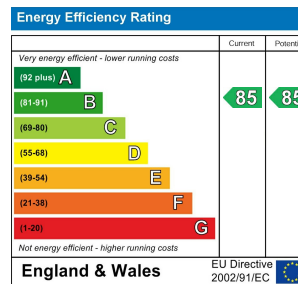
020 4534 8145

pmadmin@letukhome.co.uk

Council Tax Band: E

Local Authority:

Agents Note: Whilst every care has been taken to prepare these particulars, they are for guidance purposes only. All measurements are approximate and are for general guidance purposes only and whilst every care has been taken to ensure their accuracy, they should not be relied upon and potential buyers/tenants are advised to recheck the measurements.



<https://www.letukhome.co.uk/>