



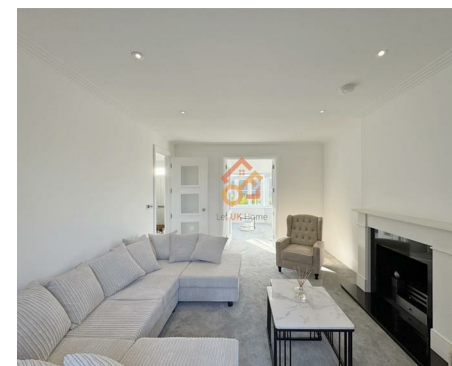
萊英家
Let UK Home

4 Bedrooms

House

Located in London

£5,200 Per Month



pmadmin@letukhome.co.uk

<https://www.letukhome.co.uk/>

020 4534 8145



1 Whistler Drive Barnet

London | | EN4 0BY



Let UK Home are excited to offer this spectacular four bedroom detached house in Trent Park development situated in the prestigious 413-acre historic and tranquil Trent Country Park.

As you step in the ground floor, you are welcomed into a spacious, open-plan hallway that leads to a living room leading to a large private courtyard, a family room and an open plan kitchen with a utility room and a stylishly attached dining area. The ground floor also features a spacious toilet. Upstairs, the first floor is home to the spacious main bedroom, three additional bedrooms and a large family bathroom, main bedroom and bedroom 2 offering their own ensuite and custom-fitted wardrobes.

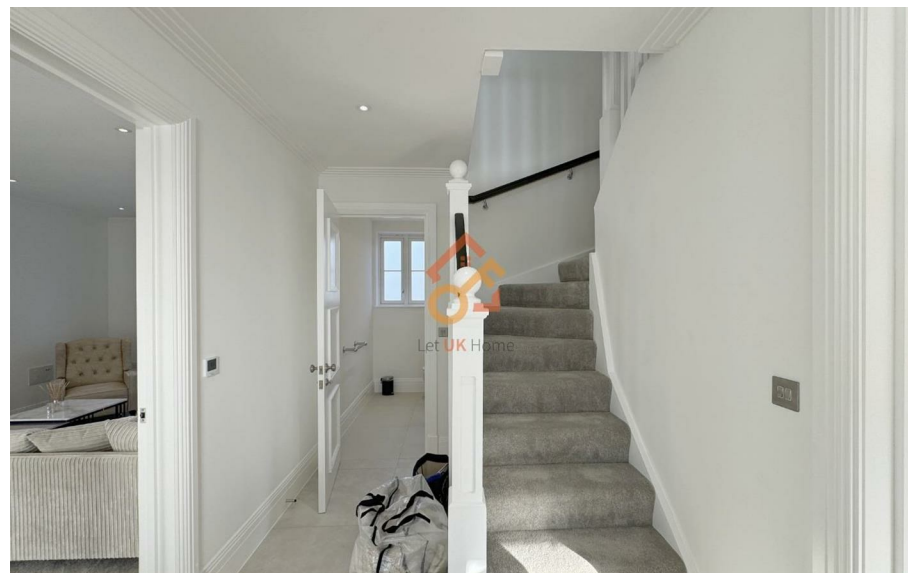
Residents have exclusive access to the Lawn Club with outdoor tennis courts, a gym, and a swimming pool. A 24-hour security and a gated entrance to provide peace of mind.

This well built detached home is situated in 413 acres of captivating historic grounds in a unique setting just moments from Oakwood & Cockfosters. As a resident, you'll enjoy 3.5km of walking and cycling routes in Trent Country Park and an 18-hole golf course.

1 Whistler Drive

£5,200 Per Month

- Detached House
- Garage
- Swimming Pool
- Tennis Court
- Residents' shuttle to Oakwood Underground station
- Private Courtyard
- Golf Club
- The Gym
- 24h Security

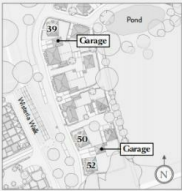



THE REPTON
**Four Bedroom
 Detached Homes**
 The Whistler Collection
 Plots 39, 50 & 52
 Total Area: 179.1 m² 1,928 ft²

GARDEN

Plot No.	Garden Aspect	Rear Garden Size
39	East	115 m ² 1,238 ft ²
50	North/East	191 m ² 2,056 ft ²
52	East	125 m ² 1,346 ft ²

GARAGE 3.59m x 7.64m 11'9" x 25'0"

TRENT PARK



GROUND FLOOR

Living Room	5.11m x 3.75m	16'9" x 12'4"
Kitchen	5.11m x 2.81m	16'9" x 9'2"
Family Room	3.28m x 2.86m	10'9" x 9'4"
Dining Room	4.56m x 3.70m	15'0" x 12'1"



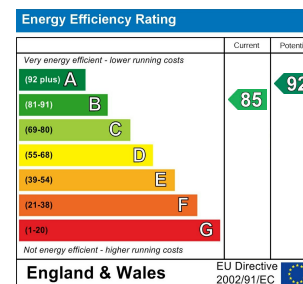
FIRST FLOOR

Main Bedroom	5.08m x 3.06m	16'8" x 10'0"
Bedroom 2	4.53m x 3.00m	14'10" x 9'10"
Bedroom 3	3.49m x 3.83m	11'5" x 12'5"
Bedroom 4	4.30m x 2.92m	14'1" x 9'6"

Council Tax Band: New Build

Local Authority:

Agents Note: Whilst every care has been taken to prepare these particulars, they are for guidance purposes only. All measurements are approximate and are for general guidance purposes only and whilst every care has been taken to ensure their accuracy, they should not be relied upon and potential buyers/tenants are advised to recheck the measurements.



6/F Two Kingdom Street

London

W2 6BD

020 4534 8145

pmadmin@letukhome.co.uk

<https://www.letukhome.co.uk/>