


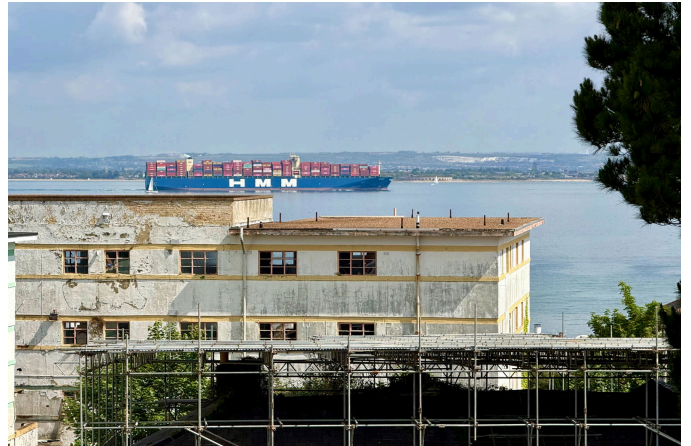


Melville Street, Ryde.

£150,000

 2  1  1



- Attractive Victorian conversion with listed façade and modern rear extension
- Bright and airy living room with large windows and open-plan flow to kitchen/diner
- Generous communal gardens, mainly laid to lawn
- Peaceful position set back from the road yet centrally located
- Walking distance to Ryde beach, seafront and Ryde Esplanade train station
- Spacious second-floor apartment with two double bedrooms
- Well-maintained building with established management company
- Ample resident parking on site
- Just a short stroll to Union Street's shops, cafés and restaurants
- Excellent mainland connections via FastCat and Hovertravel, with onward trains to London



Nestled within the attractive and well-maintained Wrafton House on Melville Street, this beautifully light and spacious two-bedroom second-floor flat forms part of a handsome Victorian conversion with listed status to the front elevation and a more modern rear addition. The building itself sits in an elevated, enviable position just moments from the heart of Ryde, with its charming bow-fronted façade offering real kerb appeal.