




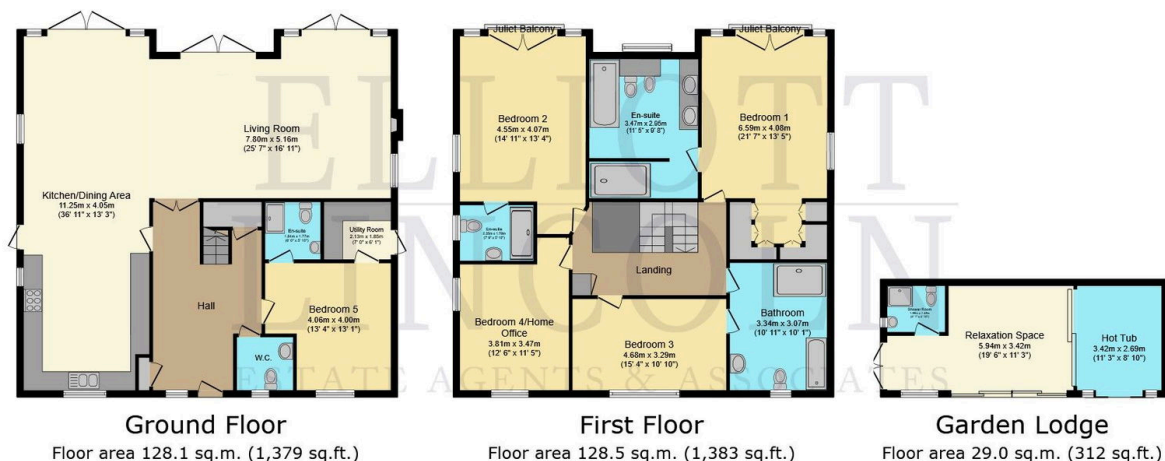
**Woodlands, Luccombe.**

£985,000

 5  4  1



- Prime Location - 5 Bedrooms
- A 0.21-acre plot offering privacy and tranquillity
- Remains of 10year NHBC Warranty
- Ground-floor en-suite bedroom with annex potential
- Self-contained Garden Lodge
- 3075 sq. ft. of luxury living space
- Stunning sea views across Shanklin and Sandown Bay
- Triple-aspect family living room with French doors opening to the garden
- Two master suites with Juliet balconies and breathtaking views
- Moments from the beach, scenic coastal walks, and Shanklin Old Village



Total floor area: 285.7 sq.m. (3,075 sq.ft.)

This floor plan is for illustrative purposes only. It is not drawn to scale. Any measurements, floor areas (including any total floor area), openings and orientations are approximate. No details are guaranteed, they cannot be relied upon for any purpose and do not form any part of any agreement. No liability is taken for any error, omission or misstatement. A party must rely upon its own inspection(s). Powered by [www.Propertybox.io](http://www.Propertybox.io)

Occupying an enviable position in the sought-after Woodlands area of Shanklin, this substantial five-bedroom detached residence offers a perfect blend of contemporary luxury and coastal charm. Boasting 3075 sq. ft. of beautifully finished living space, this exceptional home enjoys sea views stretching across Shanklin and Sandown Bay.