

**Ashbrook, Blackwater.**

£500,000

 4  1  3



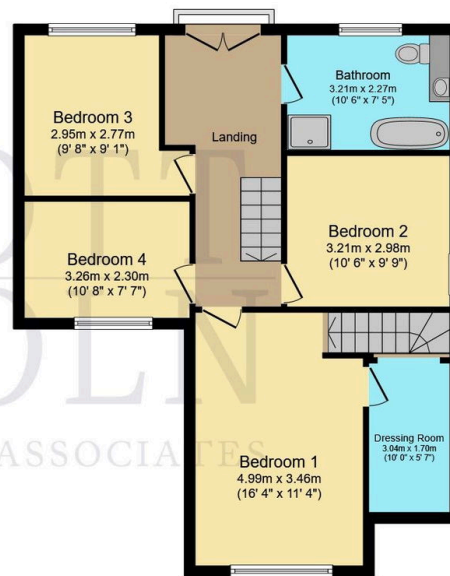
- Substantial detached home offering 1,810 sq. ft. of flexible accommodation
- Luxurious bathroom with freestanding roll-top bath and separate shower
- Beautifully appointed kitchen, walk-in pantry, and utility room
- Separate dining room and dedicated home office
- Drive on, drive off driveway and Garage
- Versatile layout, with potential to create an independent annexe
- Master bedroom with walk-in dressing room
- Living room with Inglenook fireplace and dual-fuel log/coal-burning stove
- Large, enclosed garden with decked area and countryside views
- Well-connected location, close to Newport, schools, shops, and transport links



## Ground Floor

Floor area 99.0 sq.m. (1,065 sq.ft.)

TOTAL: 168.2 sq.m. (1,810 sq.ft.)



## First Floor

Floor area 69.2 sq.m. (745 sq.ft.)

This floor plan is for illustrative purposes only. It is not drawn to scale. Any measurements, floor areas (including any total floor area), openings and orientations are approximate. No details are guaranteed, they cannot be relied upon for any purpose and do not form any part of any agreement. No liability is taken for any error, omission or misstatement. A party must rely upon its own inspection(s). Powered by [www.Propertybox.io](http://www.Propertybox.io)

A beautifully presented and substantial four-bedroom detached home, Ashbrook offers an impressive 1,810 sq. ft. of flexible accommodation, set in a picturesque countryside location just a short distance from Newport, the island's capital. Thoughtfully modernised by the current owners, this home blends contemporary comfort with charming character, featuring a versatile layout that could allow for an independent annexe if desired.