




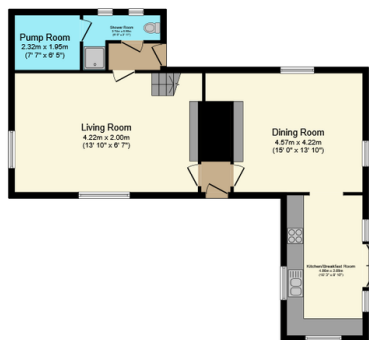
## Longlands Farmhouse, Bembridge, PO35 5PW

Offers In Region Of £795,000

 3  3  2



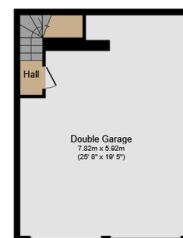
- Charming Stone Farmhouse: A Grade II listed property with a picturesque, thatched roof and timeless appeal.
- Large Kitchen/Breakfast Room: With French doors leading to the patio and garden.
- Private Grounds: Set within 1.97 acres.
- Energy-Efficient Heating: Air source heat pump for sustainable and cost-effective heating.
- Idyllic Location: Close to Bembridge and Yaverland, offering a tranquil countryside lifestyle with convenient access to amenities.
- Spacious Interiors: Approximately 2,128 sq. ft. of living space.
- Period Features: Beam ceilings and brick-built fireplaces.
- Detached Double Garage: with office above.
- Peaceful Development: just 3 properties.
- Versatile Potential: Opportunities for further use of the garage roof space or other areas, subject to planning permissions.



Ground Floor  
Floor area 76.2 sq.m. (820 sq.ft.)



First Floor  
Floor area 52.2 sq.m. (562 sq.ft.)



Garage Ground Floor  
Floor area 46.3 sq.m. (498 sq.ft.)



Garage First Floor  
Floor area 23.1 sq.m. (248 sq.ft.)

TOTAL: 197.7 sq.m. (2,128 sq.ft.)

This floor plan is for illustrative purposes only. It is not drawn to scale. Any measurements, floor areas (including any total floor area), openings and orientations are approximate. No details are guaranteed, they cannot be relied upon for any purpose and do not form any part of any agreement. No liability is taken for any error, omission or misstatement. A party must rely upon its own inspection(s). Powered by [www.Propertybox.io](http://www.Propertybox.io)

Longlands Farmhouse, an enchanting Grade II listed stone farmhouse brimming with charm and character with a new home feel. This quintessential chocolate box property, with its attractive thatched roof and beautifully preserved period features, offers a rare opportunity to own a slice of timeless countryside living.