


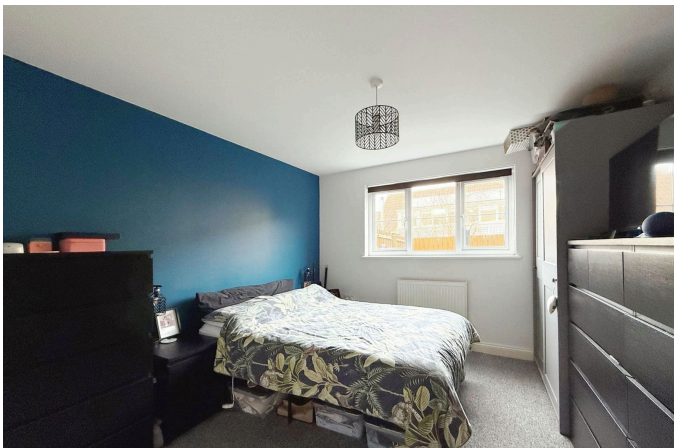


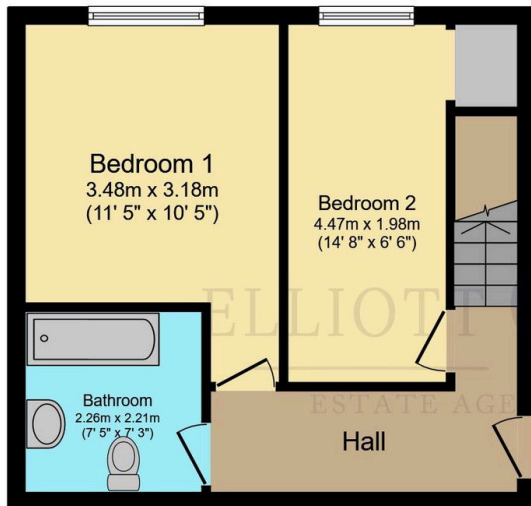
**Brickfield Mews, Newport, PO30 1AH**

£200,000

 2  1  1



- Generous Size: Spacious 72.5 m<sup>2</sup> (780 ft<sup>2</sup>) layout, rare for a two-bedroom home in this location.
- Prime Central Location: Tucked away yet only a short walk from Newport's amenities
- Modern Kitchen: Includes integrated gas hob, electric oven, space for a dining table.
- Family Bathroom & Cloakroom: Convenient cloakroom on the ground floor.
- Allocated Parking: Ensures convenience for homeowners and visitors.
- Unique Layout: Living accommodation on the ground floor with bedrooms and a bathroom on the lower ground floor.
- Bright and Airy Living Room: Features a large, double-glazed bay window for ample natural light.
- Two Double Bedrooms: Both generously sized and positioned on the lower ground floor for added privacy.
- Private Enclosed Garden: Low-maintenance and perfect for children and pets.
- Double Glazing & Gas Central Heating: For year-round comfort and energy efficiency.



**Lower Ground Floor**

Floor area 35.9 m<sup>2</sup> (386 sq.ft.)



**Ground Floor**

Floor area 36.6 m<sup>2</sup> (394 sq.ft.)

**TOTAL: 72.5 m<sup>2</sup> (780 sq.ft.)**

This floor plan is for illustrative purposes only. It is not drawn to scale. Any measurements, floor areas (including any total floor area), openings and orientations are approximate. No details are guaranteed, they cannot be relied upon for any purpose and do not form any part of any agreement. No liability is taken for any error, omission or misstatement. A party must rely upon its own inspection(s). Powered by [www.Propertybox.io](http://www.Propertybox.io)

An exceptional two-bedroom semi-detached house, a true hidden gem nestled in the heart of Newport. Perfectly positioned just a short stroll from popular amenities such as Marks and Spencer, schools, and the local bus station, this property offers the rare combination of seclusion and centrality. Spanning an impressive 72.5 m<sup>2</sup> (780 ft<sup>2</sup>), this thoughtfully designed home boasts a unique layout with living accommodation on the ground floor and bedrooms and a bathroom located on the lower ground floor.