


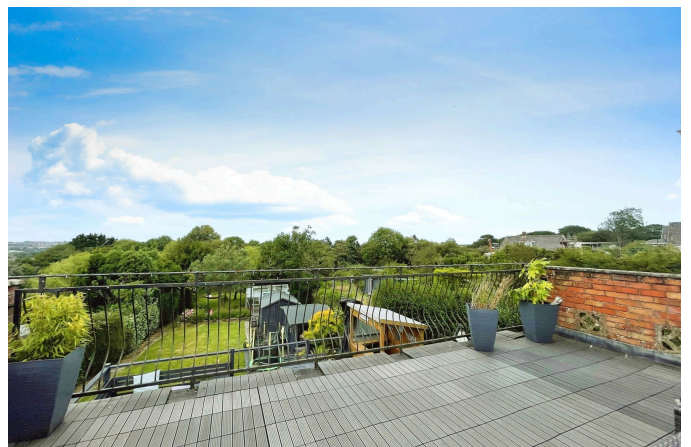


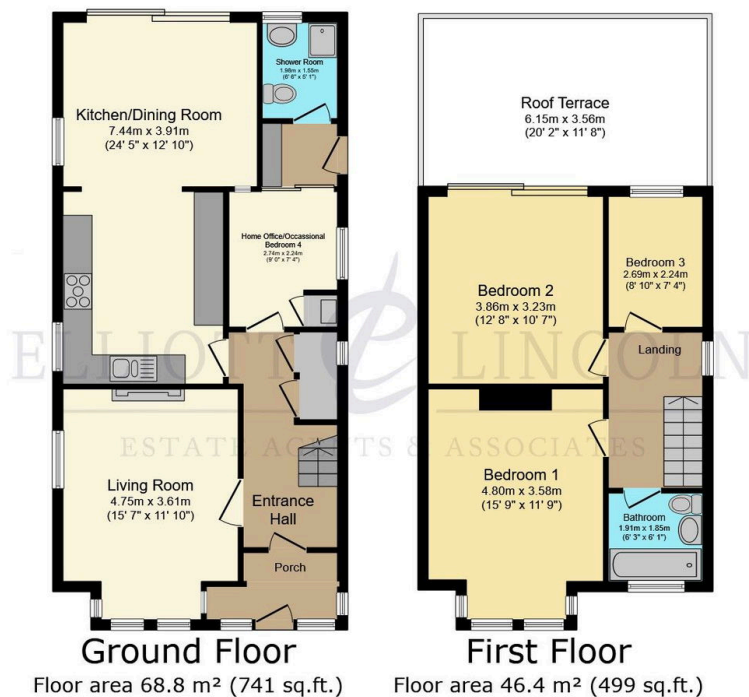
Staplers Road, Newport.

£495,000

 3  2  3



- Charming Family Home
- Large Garden
- Gas Central Heating
- Open Plan Kitchen Dining Room
- Room to Build a Garage or Carport * subject to planning
- Stunning Countryside Views
- Large Roof Terrace
- Double Glazing
- Parking for Several Cars
- Close to Local Amenities



TOTAL: 115.2 m² (1,240 sq.ft.)

This floor plan is for illustrative purposes only. It is not drawn to scale. Any measurements, floor areas (including any total floor area), openings and orientations are approximate. No details are guaranteed, they cannot be relied upon for any purpose and do not form any part of any agreement. No liability is taken for any error, omission or misstatement. A party must rely upon its own inspection(s). Powered by www.Propertybox.io

A charming circa 1940s detached family home with large gardens, stunning countryside views and a roof terrace. Parking for several cars and conveniently placed. At only 3.6 miles to the Wighlink terminal at Fishbourne (9 minutes by car) and a few minutes to all local amenities.