




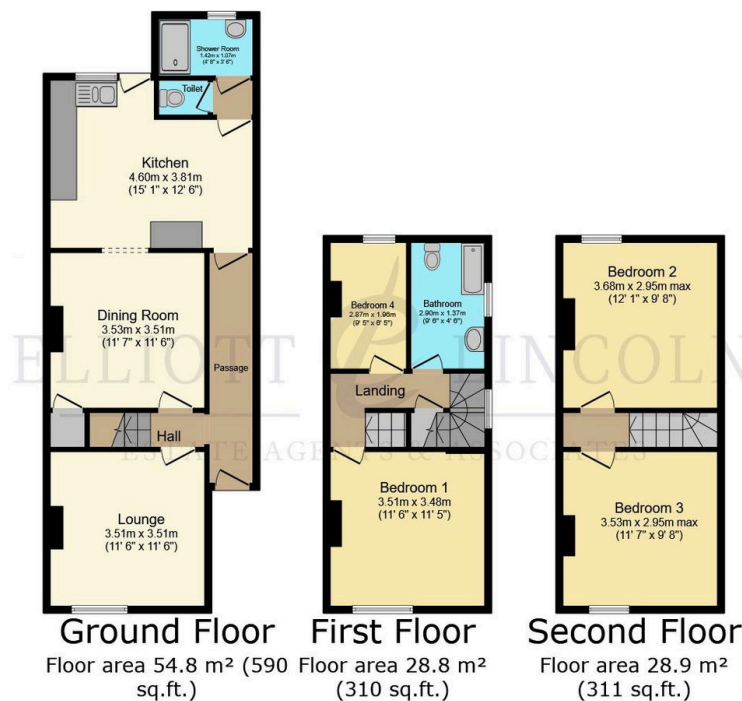
Clarence Road, East Cowes, Isle of Wight

£235,000

 4  2  0



- 4 Bedrooms
- 2 Bath/Shower Rooms
- 2 Reception Rooms
- Spacious & Light
- Double Glazing
- Gas Central Heating
- Garden
- Easy access to West Cowes via the Chain Ferry
- Close to Local Amenities
- Minutes from Mainland Connections



TOTAL: 112.6 m<sup>2</sup> (1,212 sq.ft.)

This floor plan is for illustrative purposes only. It is not drawn to scale. Any measurements, floor areas (including any total floor area), openings and orientations are approximate. No details are guaranteed, they cannot be relied upon for any purpose and do not form any part of any agreement. No liability is taken for any error, omission or misstatement. A party must rely upon its own inspection(s). Powered by [www.Propertybox.io](http://www.Propertybox.io)

A charming townhouse conveniently located in the area of East Cowes. Situated just moments from the waterfront, beach, and excellent mainland connections, this property offers the perfect blend of convenience and coastal living. The chain ferry to West Cowes is easily accessible, ensuring easy travel between these vibrant towns.