




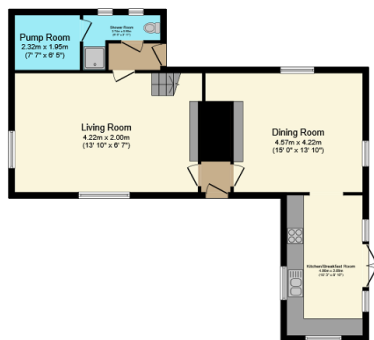
Longlands Farmhouse, Longlands Farm, Sandown Road

Guide Price £895,000

 3  3  2



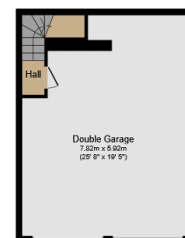
- 1.97 Acres of Additional Land
- Air Source Heat Pump
- Grade II Listed
- Countryside Views
- 3 Bathrooms
- 2 Reception Rooms
- Double Garage + Potential Home Office Above
- Gated in a Small Development
- On Bus Route
- Offered with Vacant Possession



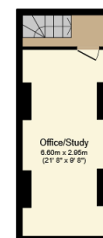
Ground Floor
Floor area 76.2 sq.m. (820 sq.ft.)



First Floor
Floor area 52.2 sq.m. (562 sq.ft.)



Garage Ground Floor
Floor area 46.3 sq.m. (498 sq.ft.)



Garage First Floor
Floor area 23.1 sq.m. (248 sq.ft.)

TOTAL: 197.7 sq.m. (2,128 sq.ft.)

This floor plan is for illustrative purposes only. It is not drawn to scale. Any measurements, floor areas (including any total floor area), openings and orientations are approximate. No details are guaranteed, they cannot be relied upon for any purpose and do not form any part of any agreement. No liability is taken for any error, omission or misstatement. A party must rely upon its own inspection(s). Powered by www.Propertybox.io

A charming, thatched stone farmhouse, meticulously rebuilt and renovated in recent years, nestled on a picturesque landscape spanning almost 2 acres of land within a small development totalling 3 properties.