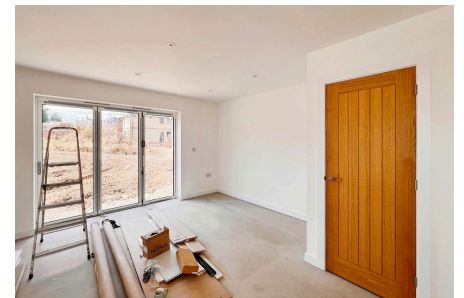
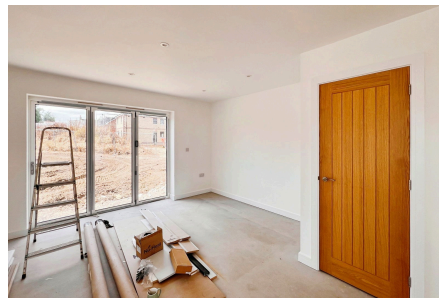


Plot 6, Turnstone Drive, Bembridge, Isle of Wight, PO35 5SL

Guide Price £395,000

 2  1  1



Environmentally friendly, energy efficient (EPC Rating A), 2-bedroom semi-detached house with a garage, private parking and South West facing garden. Well placed in the development with much attention to detail.

Key Features

- Solar Panels
- Underfloor Heating
- Downstairs Cloakroom
- Garden
- Distant Sea Glimpse from the Front Bedroom
- Battery Storage
- Double Glazing & Patio Doors
- Airing Cupboard
- Garage & Private Parking
- Completion 2024

