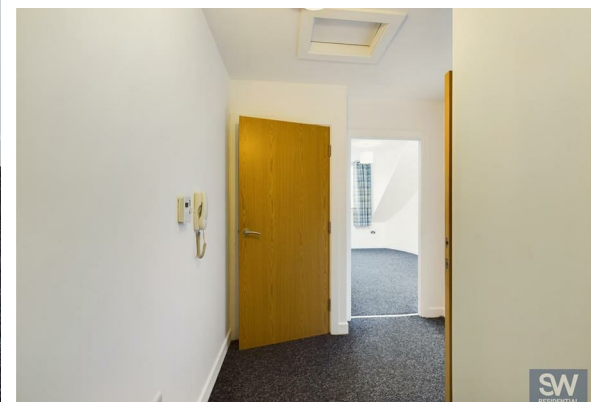




TO LET



Flat 10, 110 Castle Road, Scarborough, YO11 1TE  
£549 PCM

**SW**  
RESIDENTIAL



## Directions

## THE PROPERTY

+++Stunning apartment with views of both bays+++

Welcome to this charming one-bedroom apartment located on Castle Road in Scarborough situated close to the old town. Spanning over two floors, this top-floor apartment boasts stunning sea views of both bays, providing a picturesque backdrop to your daily life. The modern bathroom and kitchen add a contemporary feel to the traditional setting, offering both style and functionality.

Convenience is key with an allocated parking space, ensuring you always have a secure spot for your vehicle. Located close to the old town, you'll have easy access to all the amenities and attractions that Scarborough has to offer.

Don't miss the opportunity to make this apartment your new home and wake up to the soothing sound of the sea every morning. Contact us today to arrange a viewing and experience the beauty of this unique property for yourself. Available now. Please call Sanderson Weatherall today on 01723 330077 to book an accompanied viewing.

## SITUATION

<https://find-energy-certificate.service.gov.uk/energy-certificate/0460-2826-6656-9391-7051?print=true>