



10 Parkfield Close, Scarborough, North Yorkshire, YO12 5ND

£125,000

**SW**  
RESIDENTIAL

- IN NEED OF SOME COSMETIC UPDATING
- CUL DE SAC LOCATION
- ENCLOSED REAR GARDEN
- NO ONWARD CHAIN
- IDEAL FIRST TIME BUYER PROPERTY OR BUY TO LET INVESTMENT
- GAS CENTRAL HEATING AND UPVC THROUGHOUT

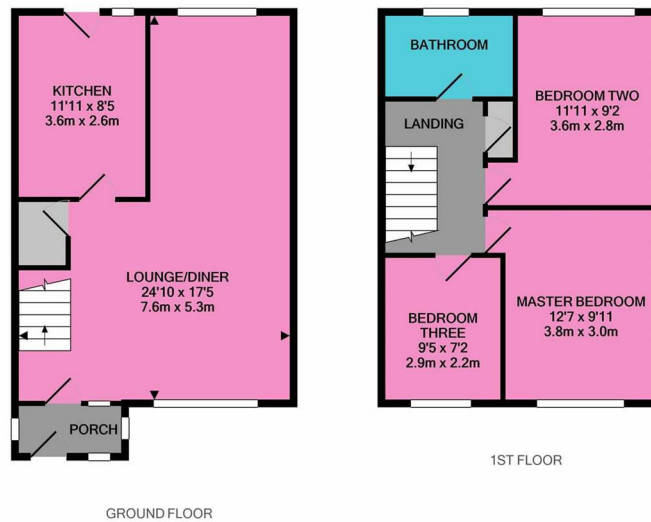
## THE PROPERTY

Nestled in the charming Parkfield Close in Scarborough, this delightful three bedroom end terraced house awaits its new owner. Situated near the picturesque Falsgrave Park, this property offers a fantastic opportunity for first-time buyers or those looking to invest in the buy-to-let market.

Although the property requires some cosmetic upgrading, its potential shines through, offering you the chance to create a cosy and inviting living space tailored to your tastes. Sold with no onward chain, this home provides a hassle-free buying process, allowing you to make it your own without delay.

With its prime location and the promise of personalisation, this end terrace house is a gem waiting to be discovered. Don't miss out on the chance to transform this property into your dream home or a lucrative investment opportunity.

## SITUATION



Whilst every attempt has been made to ensure the accuracy of the floor plan contained here, measurements of doors, windows, rooms and any other items are approximate and no responsibility is taken for any error, omission, or mis-statement. This plan is for illustrative purposes only and should be used as such by any prospective purchaser. The services, systems and appliances shown have not been tested and no guarantee as to their operability or efficiency can be given.  
Made with Metropix ©2020

## Directions