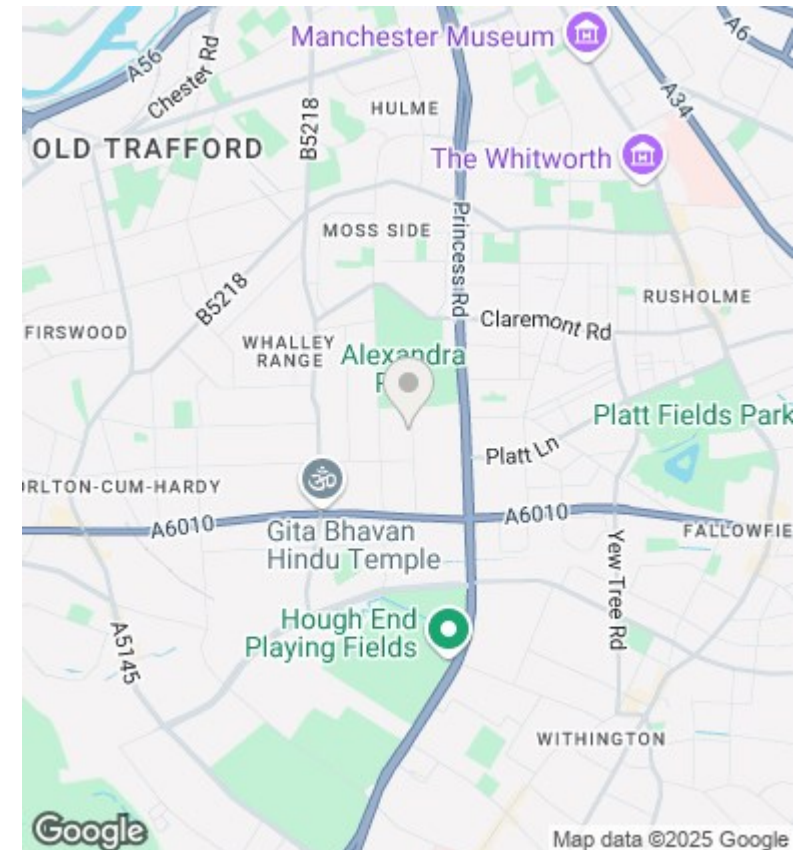
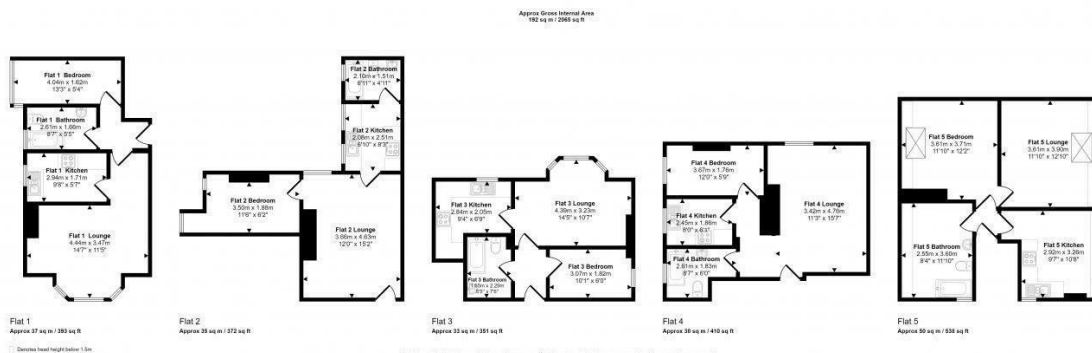




4 Manley Road, Manchester, M16 8PN

£4,500 Per Month

- Five newly refurbished one-bedroom flats available to rent as a whole
- Freshly painted and new carpets throughout
- Ideal for Investors , care Homes and assisted Living
- Nearby healthcare: The Alexandra Practice NHS GP, The Range Medical Centre
- Spacious reception rooms in each flat
- Gas central heating in all flats
- Close to top schools: William Grammar, KD Grammar, Whalley Range
- Modern kitchens with brand-new cookers
- Council Tax Band A (affordable)
- Potential Rent £5k Per month



Directions

Viewings

Viewings by arrangement only. Call 0161 804 3480 to make an appointment.

Council Tax Band

EPC Rating:

E

Energy Efficiency Rating		
	Current	Potential
Very energy efficient - lower running costs		
(92 plus) A		
(81-91) B		
(69-80) C		
(55-68) D		
(39-54) E	54	
(21-38) F		
(1-20) G		
Not energy efficient - higher running costs		
England & Wales	EU Directive 2002/91/EC	