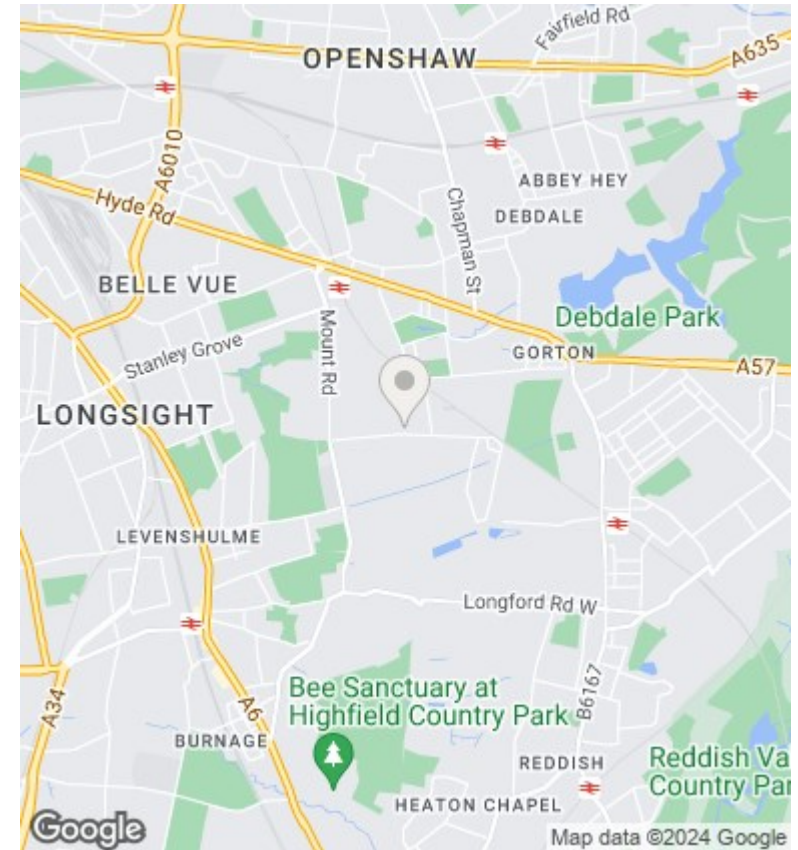
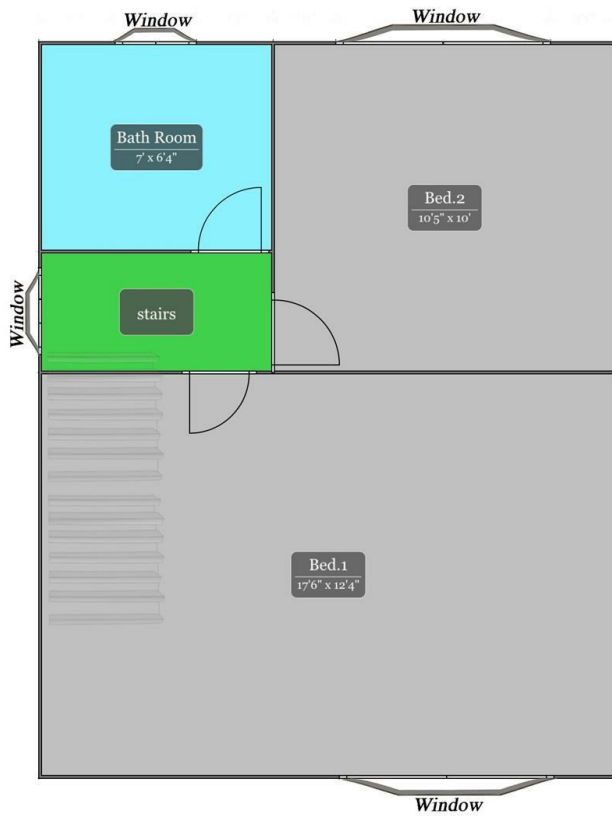




13 Forber Crescent, Manchester, M18 7PU

Offers Over £150,000

- 2 Bed semi detached house
- Modern Family Bathroom
- Close to motorway, amenities and transport links
- Drive way
- Spacious Reception Room
- Exceptionally Large rear Garden
- currently tenanted
- 2 Large Bedrooms
- Close to Manchester city centre
- No chain



Directions

Viewings

Viewings by arrangement only. Call 0161 804 3480 to make an appointment.

Council Tax Band

EPC Rating:

Energy Efficiency Rating		
	Current	Potential
<i>Very energy efficient - lower running costs</i>		
(92 plus) A		
(81-91) B		
(69-80) C		
(55-68) D		
(39-54) E		
(21-38) F		
(1-20) G		
<i>Not energy efficient - higher running costs</i>		
England & Wales	EU Directive 2002/91/EC	