



Your Logo

6 Wild Boar Field,
Offers Over £500,000

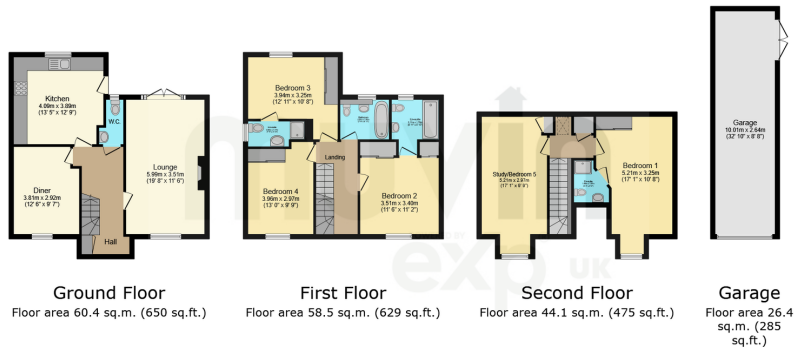
🛏 5 🚿 4 🛋 2



- Large detached family house
- Five double bedrooms
- Desirable location
- Secluded setting
- Well maintained west facing rear garden
- Driveway
- Tandem garage
- Close to local amenities and main transport links
- Spacious reception rooms
- Good schools within close proximity



This large five bedroom detached family house is situated in a private setting on the ever popular Marks Farm development, has three en-suites, and comes with a tandem garage and driveway.



Total floor area: 189.4 sq.m. (2,038 sq.ft.)

This floor plan is for illustrative purposes only. It is not drawn to scale. Any measurements, floor areas (including any total floor area), openings and orientations are approximate. No details are guaranteed, they cannot be relied upon for any purpose and do not form any part of any agreement. No liability is taken for any error, omission or misstatement. A party must rely upon its own inspection(s). Powered by [www.propertybox.io](#)

