



Colemans Close, Little Canfield, Dunmow, CM6 1TS

£625,000

🛏 4 🚿 3 🛋 2

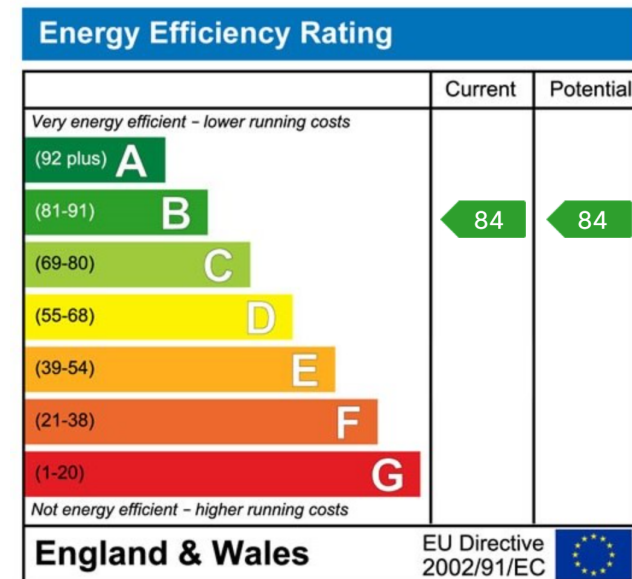
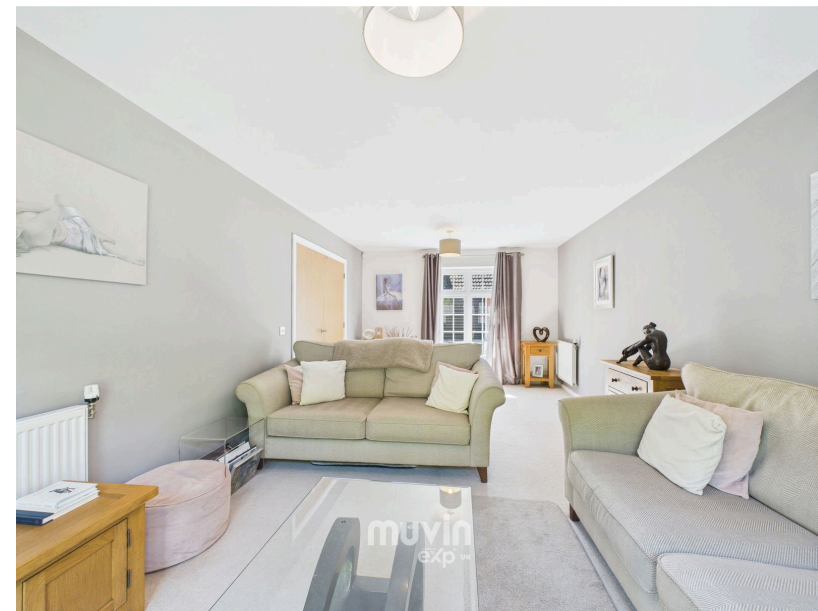


- Detached four bedroom home
- Backing onto woodland
- Kitchen/family room
- Dining room
- Garage and driveway
- En-suite
- Lounge



Spacious 4-Bed Detached Home Backing Onto Woodland – Ideal for Families

Beautifully presented throughout, this generous four-bedroom detached home offers space, style and flexibility in a peaceful location. Featuring a bright open-plan kitchen/family room with quartz worktops and French doors to the garden, two reception rooms, a spacious main bedroom with en-suite, two further doubles, a single bedroom/home office, and a modern family bathroom. Outside you'll find a private garden backing onto woodland, a garage, and parking for 2–3 cars. Situated in a friendly community close to schools, parks, and transport links – this home is perfect for growing families or professionals looking for more space. Early viewing advised.



CIARAN WILLIAMS | 07467 164 021

ciaran@muvin.co.uk

MUVIN.CO.UK