

Your Logo

Colemans Close, Little Canfield, Dunmow, CM6 1TS

£635,000

🛏 4 🚿 3 🚗 2



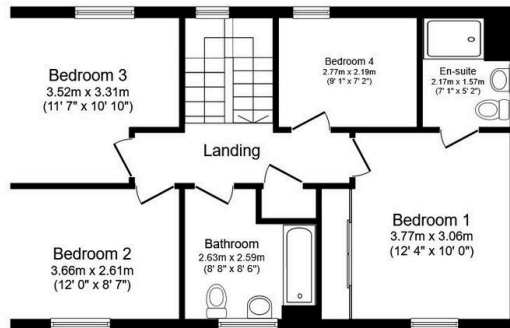
Your Logo

- Detached four bedroom home
- Backing onto woodland
- Kitchen/family room
- Dining room
-
- Garage and driveway
- En-suite
- Lounge
-
-



Ground Floor

Floor area 81.0 m² (872 sq.ft.)



First Floor

Floor area 60.7 m² (653 sq.ft.)

TOTAL: 141.6 m² (1,525 sq.ft.)

This floor plan is for illustrative purposes only. It is not drawn to scale. Any measurements, floor areas (including any total floor area), openings and orientations are approximate. No details are guaranteed, they cannot be relied upon for any purpose and do not form any part of any agreement. No liability is taken for any error, omission or misstatement. A party must rely upon its own inspection(s). Powered by www.Propertybox.io

This beautifully decorated detached property for sale features four bedrooms, including a master with en-suite, two spacious reception rooms, a modern open-plan kitchen with dining space, a large bathroom, a garage, ample parking, and a serene woodland backdrop, making it an ideal family home in a desirable, community-focused location with excellent amenities and transport links.