



Railway Street, Braintree, CM7 3JZ

£110,000

🛏 1 🚿 1 🚿 1



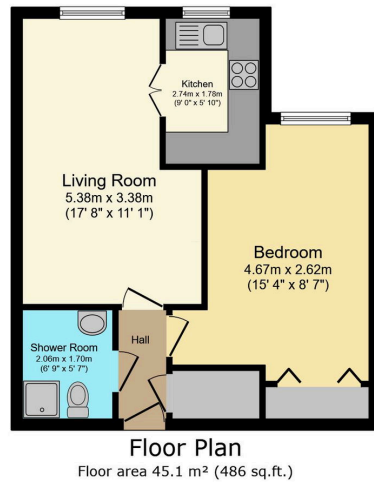
Looking for a retirement property in a great location? This one-bedroom, second-floor apartment in the sought-after Albert Court development is perfect for those aged 60 and over.

Just 0.4 miles from Braintree town centre, you'll have easy access to shops, cafés, and the mainline station with links to London Liverpool Street. Inside, the apartment offers a bright and spacious living/dining area, a modern fitted kitchen with integrated appliances, and a bedroom with mirrored fitted wardrobes. The bathroom features a wet room, and there's a handy storage cupboard in the hallway.

Albert Court has a great community feel, with beautiful communal gardens, resident parking, a lounge, laundry room, guest accommodation, and a Careline alarm service. There's also a resident management team and regular social activities, making it a friendly and welcoming place to live.

A fantastic opportunity to join a well-regarded retirement community!

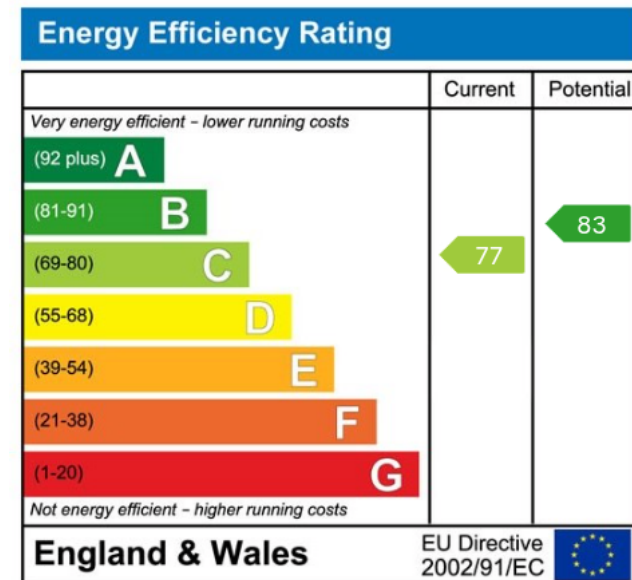




TOTAL: 45.1 m² (486 sq.ft.)

This floor plan is for illustrative purposes only. It is not drawn to scale. Any measurements, floor areas (including any total floor area), openings and orientations are approximate. No details are guaranteed, they cannot be relied upon for any purpose and do not form any part of any agreement. No liability is taken for any error, omission or misstatement. A party must rely upon its own inspection(s). Powered by www.propertybox.ie

- Great sized One Bedroom with Fitted Wardrobes
- Large Lounge
- Wet Room
- Fully Fitted Kitchen
- Beautiful communal gardens
- Lift Access
- Residents Parking
- On-site facilities
- Regular Social Calendar
- Fantastic Location for Town Centre



CIARAN WILLIAMS | 07467 164 021

ciaran@muvin.co.uk

MUVIN.CO.UK