



Camelia Crescent, Regency Court, Stover, Newton Abbot, Devon

£175,000

🛏 2 🚿 2 🛋 1



- Detached Park Home Bungalow
- 42'x20' Design
- Low Maintenance
- Ensuite To The Master Bedroom
- Modern Kitchen with Utility Room
- Stately Albion 'Windsor'
- No Stamp Duty To Pay
- Two Double Bedrooms
- Separate Lounge And Dining Room
- End Of Chain Sale

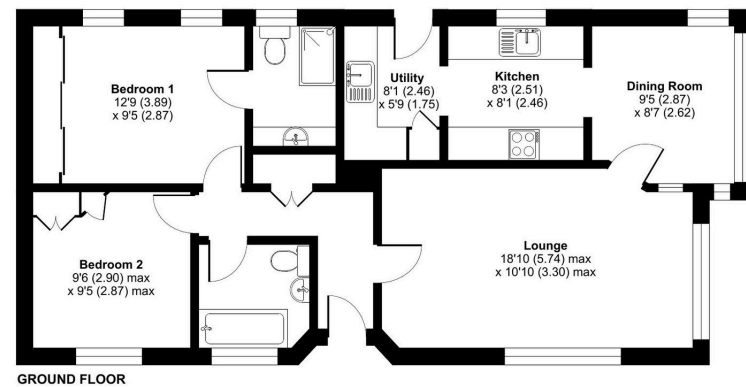


A stunning detached park home bungalow built by Stately Albion which oozes quality throughout and is located on this popular 12-Month Leisure park close to Newton Abbot. Not only will the location appeal to many buyers but the layout and bright, spacious feel of the home will impress many. The home has a separate living and dining room, a modern fitted kitchen with utility room and integrated appliances, two double bedrooms both with built in wardrobes and the master having an ensuite shower room and a guest bathroom rounds off the accommodation. With part-vaulted ceilings, an spacious and enclosed decked area to the side and rear of the home and a driveway to one side, this home must be viewed to be appreciated. Home if offered with no onward chain.



Camellia Crescent, Stover, Newton Abbot, TQ12

Approximate Area = 788 sq ft / 73.2 sq m
For identification only - Not to scale



Floor plan produced in accordance with RICS Property Measurement 2nd Edition, incorporating International Property Measurement Standards (IPMS2 Residential). Produced for The Park Home Agency Ltd. REF: 1340338 © richcom 2025



01793 230185

sales@theparkhomeagency.co.uk

Agents Notes: All measurements are approximate and quoted in metric with imperial equivalents and for general guidance only and whilst every attempt has been made to ensure accuracy, they must not be relied on. The fixtures, fittings and appliances referred to have not been tested and therefore no guarantee can be given that they are in working order. Internal photographs are reproduced for general information and it must not be inferred that any item shown is included with the property. For a free valuation, contact the numbers listed on the brochure