



Redhiil Lane, Watton, Thetford, Norfolk, IP25 6RE

£125,000

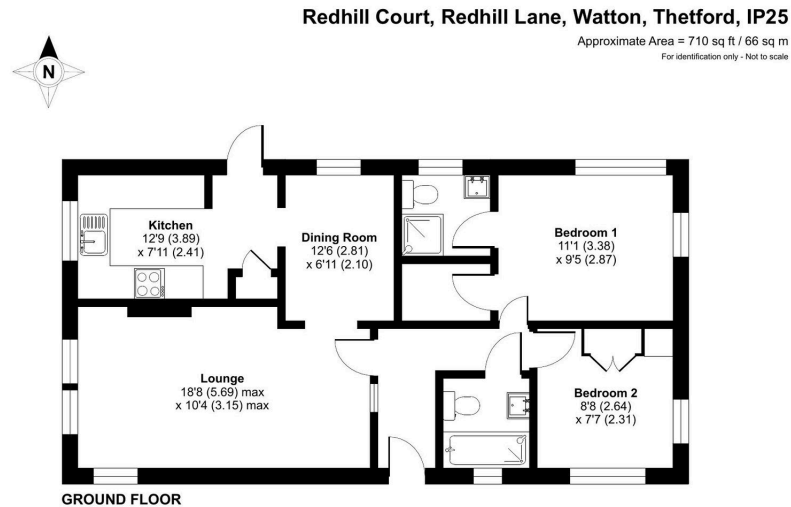
🛏️ 2 🚿 2 🛋️ 1



- Detached Park Home Bungalow
- Two Double Bedrooms
- Lounge and Dining Room
- Garage and Parking Space
- No Onward Chain
- Popular Residential Park
- Ensuite To Bedroom 1
- Modern-Refitted Kitchen
- NO STAMP DUTY TO PAY
- Ramp Leads To The Front Door



A well presented and spacious two double bedroom detached park home bungalow located on the outskirts of this popular residential park for the over 45's. Located in a town setting near Thetford, this home boasts an entrance hall, a spacious dual aspect lounge, a separate dining room, a re-fitted modern kitchen, a master bedroom with an ensuite shower and walk in wardrobe, a second bedroom with built in wardrobes, a further guest bedroom, gardens areas to all side of the home with a ramp to the front door and there is a garage and parking space located close to the home. An internal viewing is strongly recommended.



Floor plan produced in accordance with RICS Property Measurement 2nd Edition, incorporating International Property Measurement Standards (IPMS2 Residential). © redhome 2025. Produced for The Park Home Agency Ltd. REF: 1310488



01793 230185
sales@theparkhomeagency.co.uk

Agents Notes: All measurements are approximate and quoted in metric with imperial equivalents and for general guidance only and whilst every attempt has been made to ensure accuracy, they must not be relied on. The fixtures, fittings and appliances referred to have not been tested and therefore no guarantee can be given that they are in working order. Internal photographs are reproduced for general information and it must not be inferred that any item shown is included with the property. For a free valuation, contact the numbers listed on the brochure